

QUICK MOVE-IN

FLOORPLAN

Lilac

COMMUNITY

Townes Of Hampden



**3
Beds**



**2.5
Baths**



**2-Car
Garage**



**1863
Sq. Ft.**



REPRESENTATIVE PHOTO

The main floor showcases engineered vinyl plank flooring throughout, creating a seamless flow between the expanded family room, breakfast area, and upgraded kitchen. Enhanced with recessed lighting and additional windows, the family room is bright and inviting—ideal for both relaxing and entertaining. The kitchen features upgraded cabinetry, quartz countertops, a tile backsplash, slate gas appliances, and recessed lighting for a polished, contemporary look. Upstairs, the owner's suite includes recessed lighting, a walk-in closet, and a private bath with a double-bowl vanity and luxury vinyl plank flooring. Two additional bedrooms, a full bath, and a conveniently located laundry room complete the second floor, offering both comfort and practicality. The daylight basement package brings in natural light and...



REPRESENTATIVE PHOTO

Cumberland Valley School District

Sales Office Hours

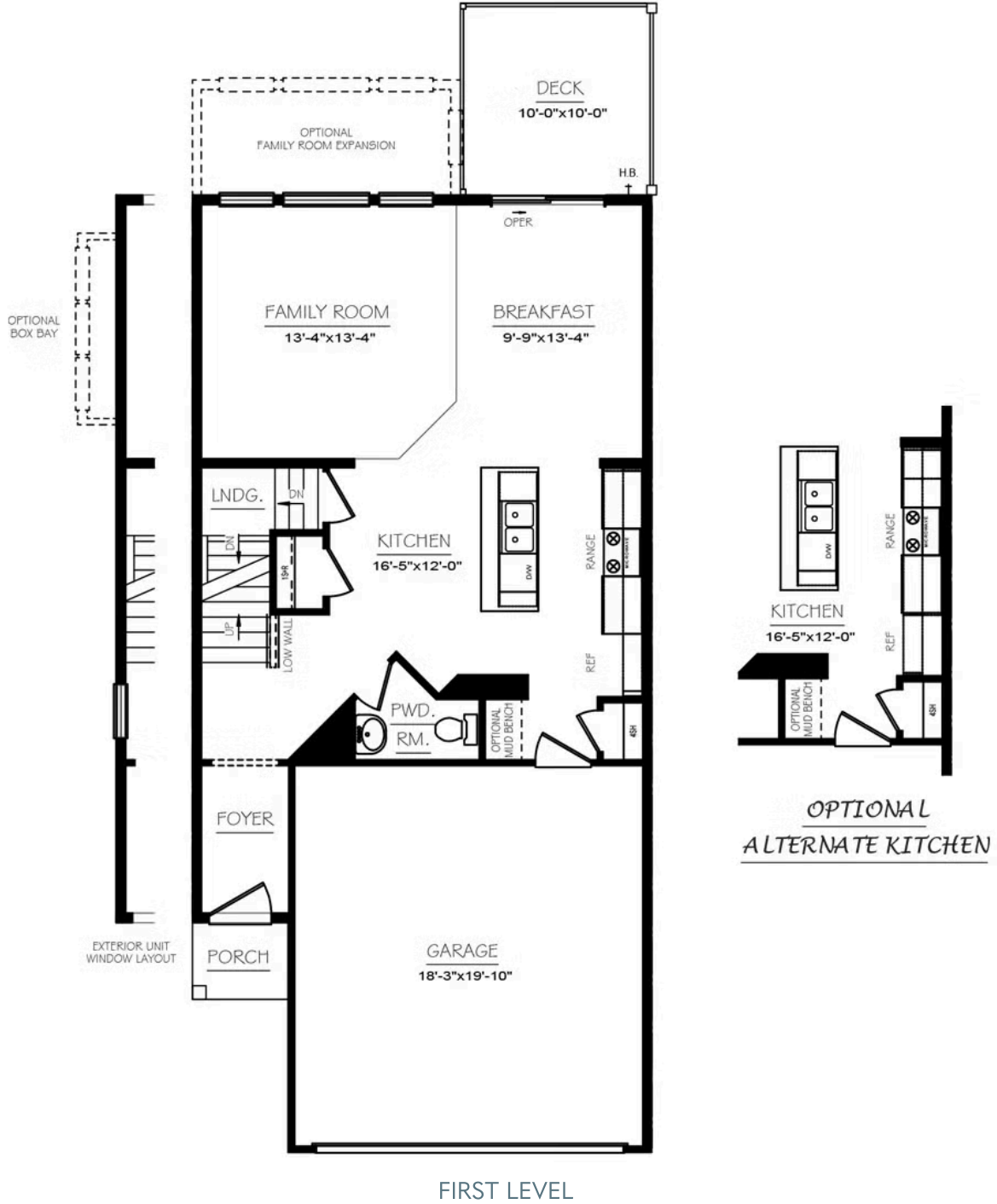
By Appointment: Open Wednesday - Saturday 10:00 am - 5:00 pm | Closed Sundays, Mondays, and Tuesdays



Have Questions? Ask...
KELLY

(484) 772-2693 / bhmarketing@berkshomes.com

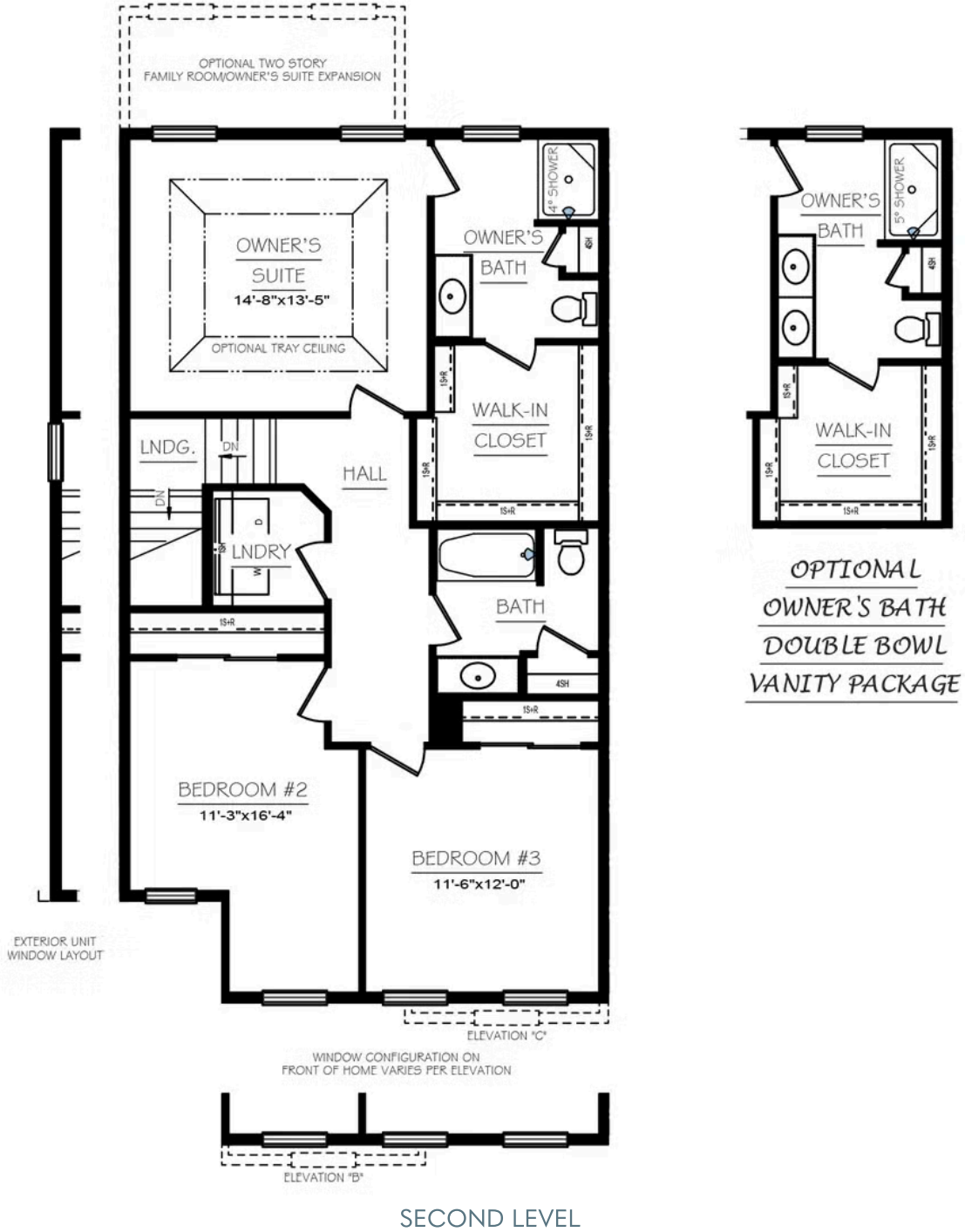




Have Questions? Ask...
KELLY

(484) 772-2693 / bhmarketing@berkshomes.com



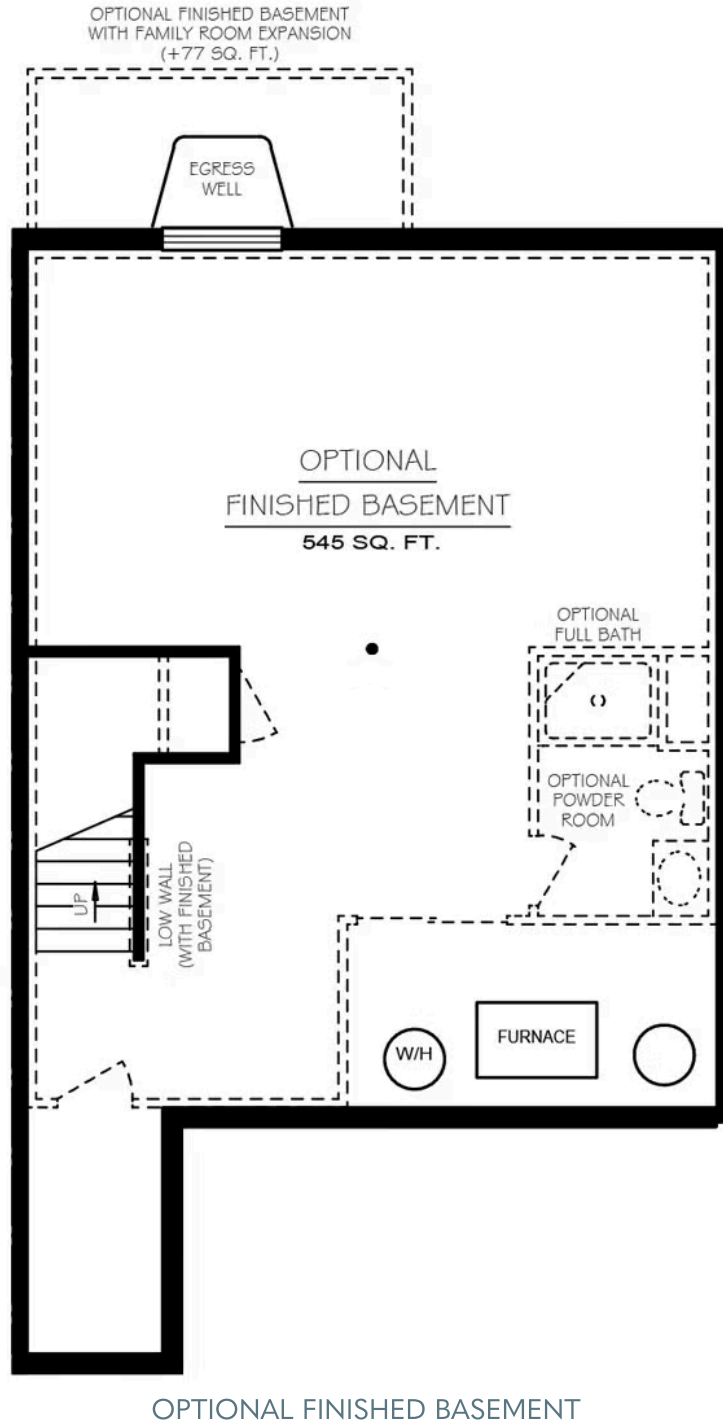


Have Questions? Ask...
KELLY

(484) 772-2693 / bhmarketing@berkshomes.com



2125 Hampden Court LOT 18



Have Questions? Ask...
KELLY

(484) 772-2693 / bhmarketing@berkshomes.com

