

# 2145 Hampden Court LOT 20

\$419,990

QUICK MOVE-IN

FLOORPLAN

**Lilac**

COMMUNITY

**Townes Of Hampden**



**3  
Beds**



**2.5  
Baths**



**2-Car  
Garage**



**2488  
Sq. Ft.**



REPRESENTATIVE PHOTO



REPRESENTATIVE PHOTO

This upgraded Lilac townhome offers expanded living space, modern finishes, and abundant natural light throughout. The first-floor features engineered vinyl plank flooring that extends seamlessly across the open-concept layout. The expanded family room with recessed lighting creates a bright and inviting gathering space that flows effortlessly into the kitchen and breakfast area. The upgraded kitchen includes recessed lighting, quartz countertops, a tile backsplash, upgraded cabinetry, and stainless steel appliances—blending everyday function with refined style. A mudroom bench adds practical convenience near the garage entry. Upstairs, the owner's suite includes recessed lighting and a private bath with a double-bowl vanity, offering a comfortable retreat at the end of the day. The daylight...

## Cumberland Valley School District

### Sales Office Hours

By Appointment: Open Wednesday - Saturday 10:00 am - 5:00 pm | Closed Sundays, Mondays, and Tuesdays



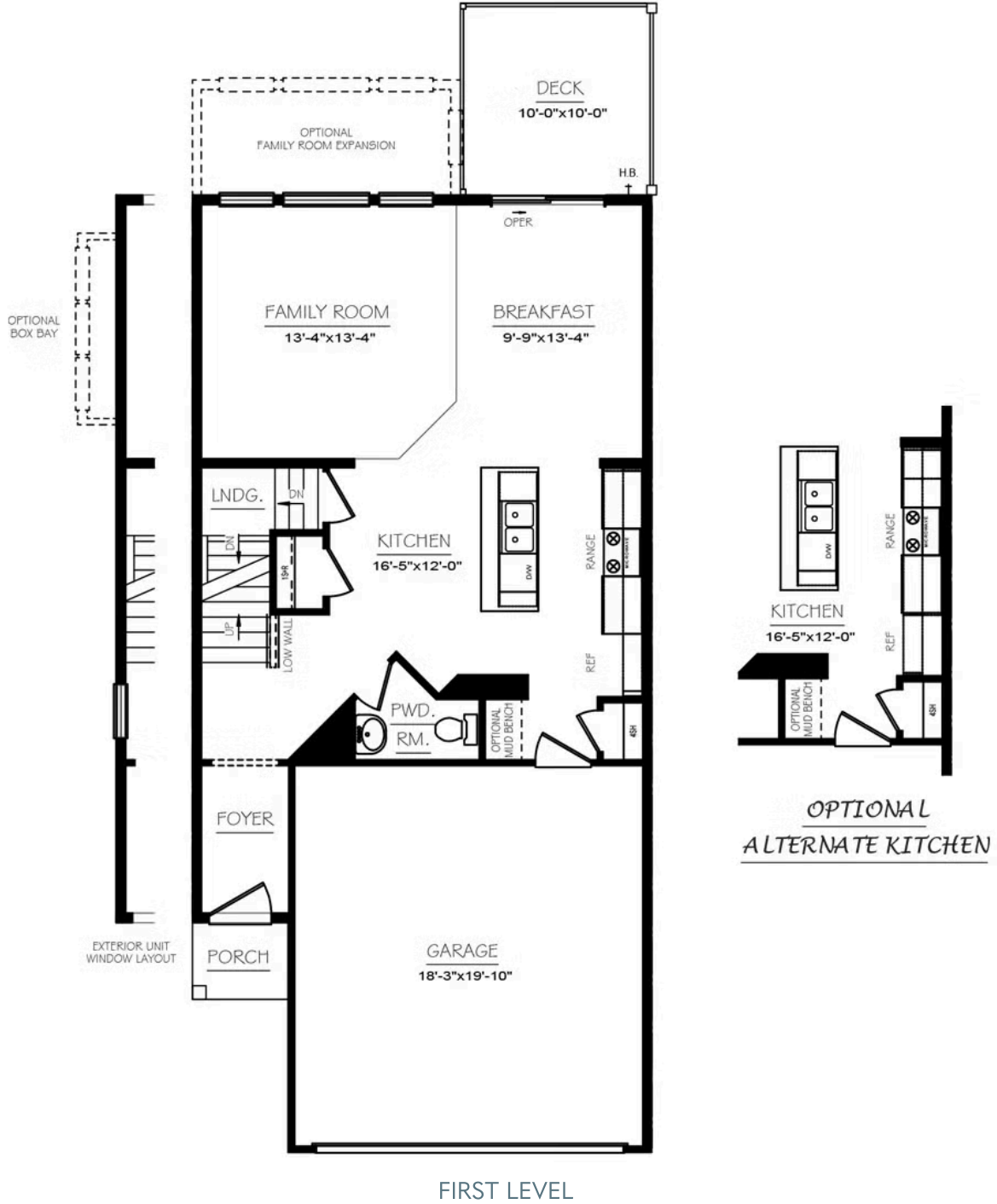
REPRESENTATIVE PHOTO



**Have Questions? Ask...**  
**KELLY**

(484) 772-2693 / [bhmarketing@berkshomes.com](mailto:bhmarketing@berkshomes.com)

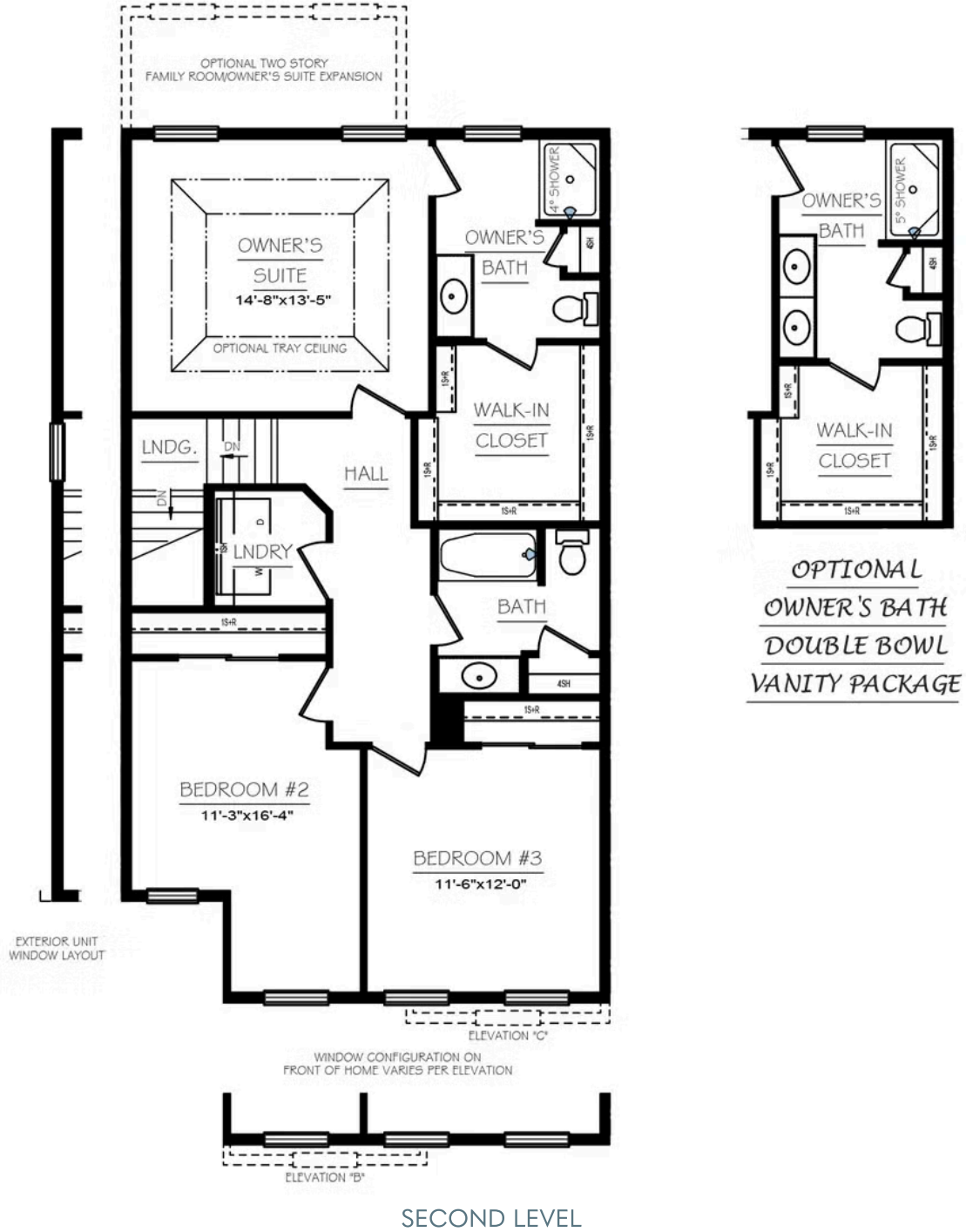




**Have Questions? Ask...**  
**KELLY**

(484) 772-2693 / [bhmarketing@berkshomes.com](mailto:bhmarketing@berkshomes.com)



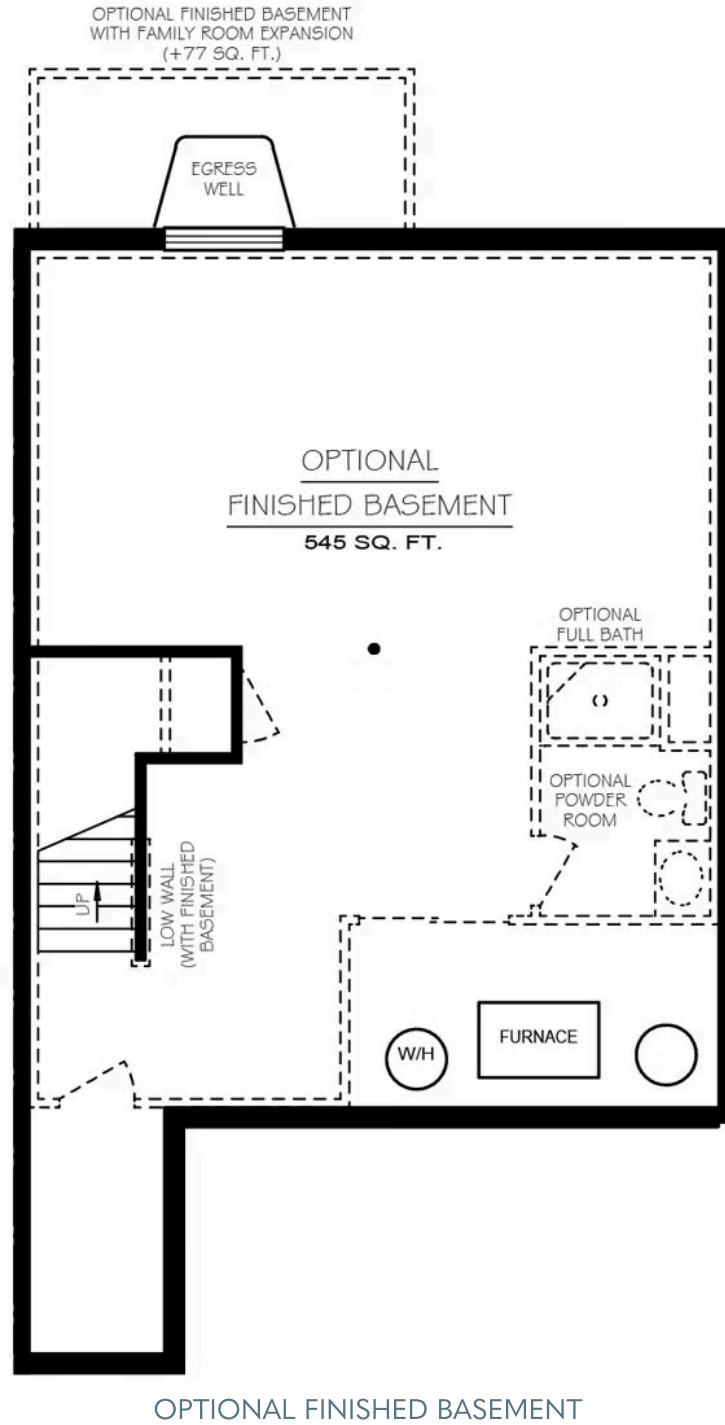


**Have Questions? Ask...**  
**KELLY**

(484) 772-2693 / [bhmarketing@berkshomes.com](mailto:bhmarketing@berkshomes.com)



# 2145 Hampden Court LOT 20



Have Questions? Ask...  
**KELLY**

(484) 772-2693 / [bhmarketing@berkshomes.com](mailto:bhmarketing@berkshomes.com)

