

UNDER CONSTRUCTION

FLOORPLAN

Iris

COMMUNITY

Elizabeth Village



**3
Beds**



**2.5
Baths**



**1-Car
Garage**



**1369
Sq. Ft.**



REPRESENTATIVE PHOTO



REPRESENTATIVE PHOTO

Welcome to this 3-bed, 2.5 bath, 3-story townhome, featuring 1,369 sq. ft. of living space.

As you enter, you're greeted by a welcoming foyer, leading you to the finished basement -- ideal for a workout space, game room, or whatever you may need. On the main level, the kitchen is the heart of the home, featuring an island, granite countertops, tile backsplash, upgraded cabinetry, stainless steel appliances, and recessed lighting. Adjacent to the kitchen is the breakfast area, a perfect space for family meals or hosting. The kitchen seamlessly flows into the spacious family room, enhanced by recessed lighting and engineered vinyl plank flooring.

On the upper level, you'll find the spacious owner's sui...

Central Dauphin School District

Sales Office Hours

By Appointment: Open Wednesday - Saturday 10:00 am - 5:00 pm | Closed Sundays, Mondays, and Tuesdays



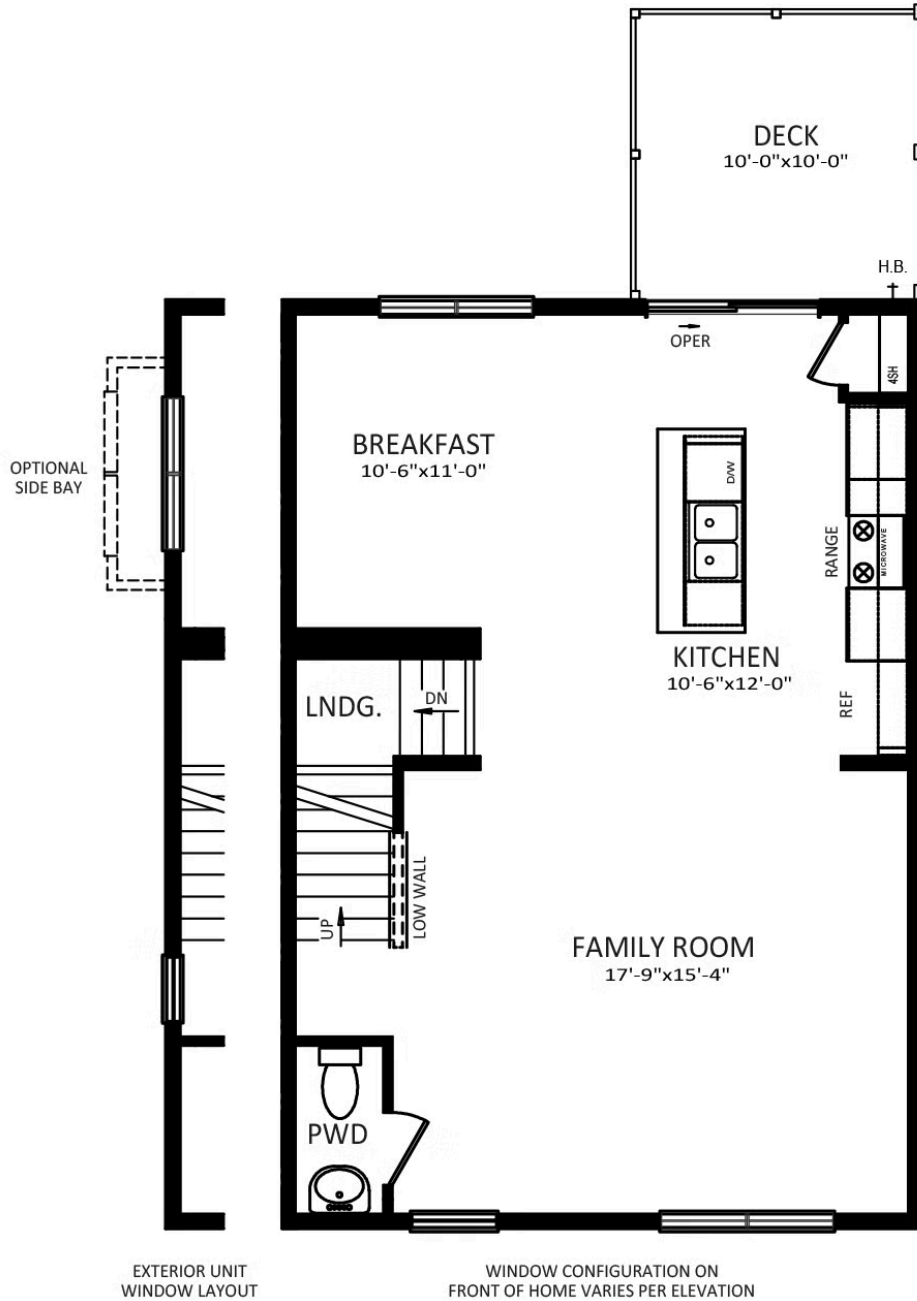
REPRESENTATIVE PHOTO



Have Questions? Ask...
KELLY

(484) 772-2693 / bhmarketing@berkshomes.com





FIRST FLOOR

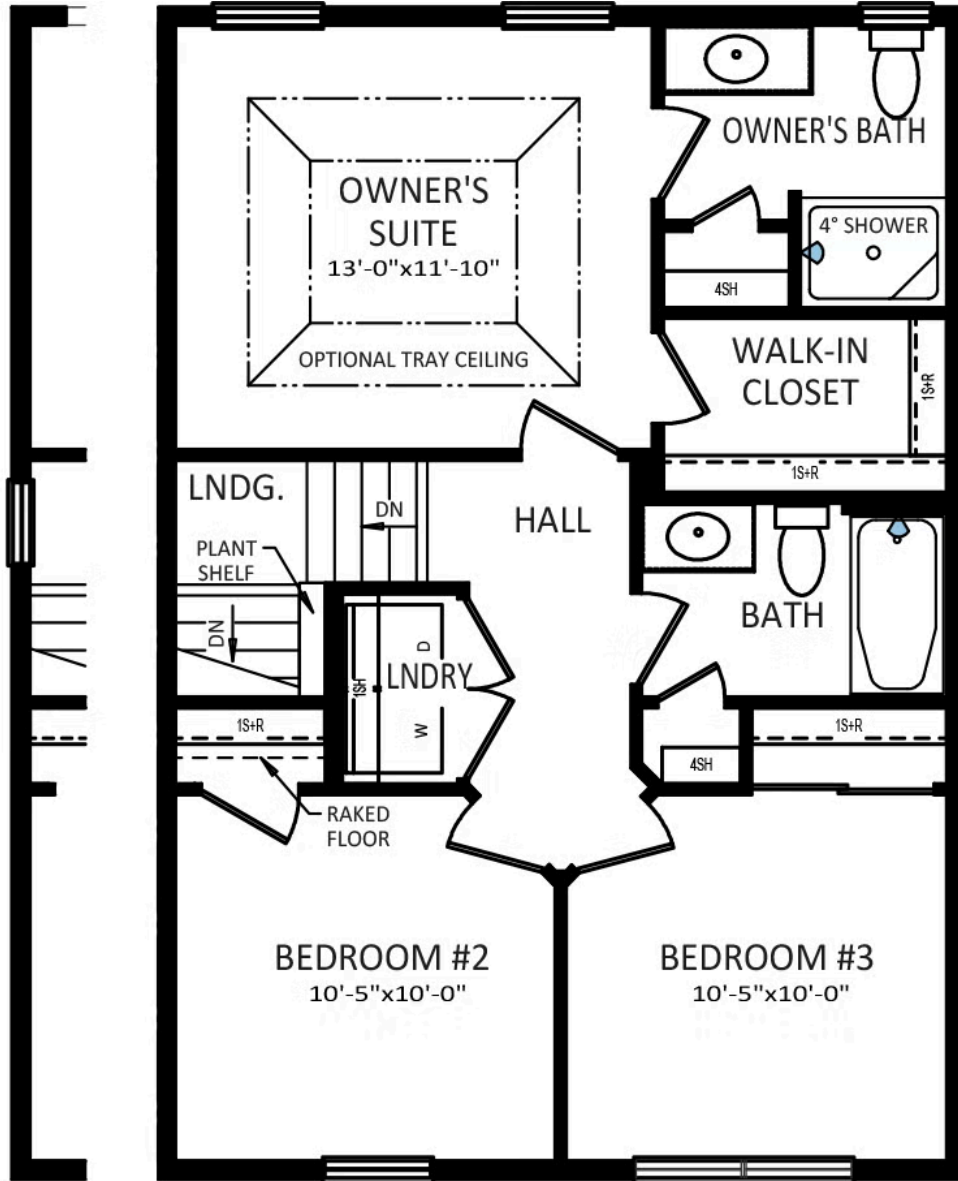
FIRST LEVEL



Have Questions? Ask...
KELLY

(484) 772-2693 / bhmarketing@berkshomes.com





EXTERIOR UNIT
WINDOW LAYOUT

WINDOW CONFIGURATION ON
FRONT OF HOME VARIES PER ELEVATION

SECOND FLOOR

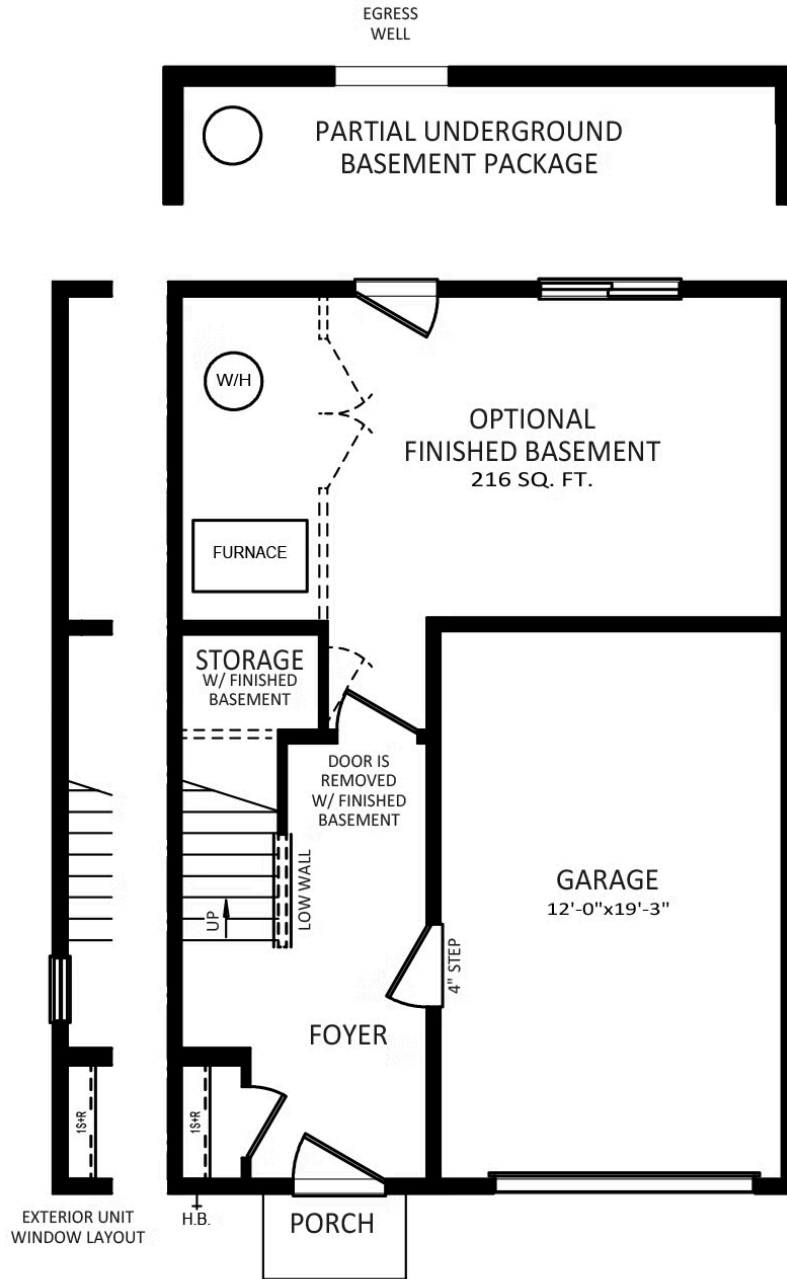
SECOND LEVEL



Have Questions? Ask...
KELLY

(484) 772-2693 / bhmarketing@berkshomes.com





LOWER LEVEL

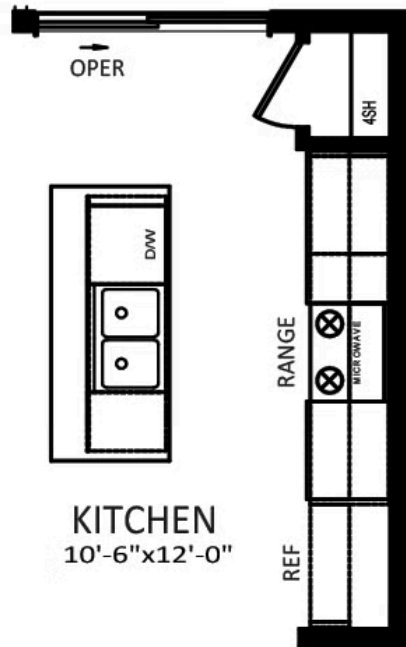
LOWER LEVEL



Have Questions? Ask...
KELLY

(484) 772-2693 / bhmarketing@berkshomes.com





**OPTIONAL
ALTERNATE KITCHEN**

FIRST LEVEL OPTION



Have Questions? Ask...
KELLY

(484) 772-2693 / bhmarketing@berkshomes.com





**OWNER'S BATH
DOUBLE BOWL
VANITY PACKAGE**

SECOND LEVEL OPTION



Have Questions? Ask...
KELLY

(484) 772-2693 / bhmarketing@berkshomes.com

