

UNDER CONSTRUCTION

FLOORPLAN

Iris

COMMUNITY

Elizabeth Village



**3
Beds**



**2.5
Baths**



**1-Car
Garage**



**1385
Sq. Ft.**



REPRESENTATIVE PHOTO



REPRESENTATIVE PHOTO



REPRESENTATIVE PHOTO

This 3-bedroom, 2.5-bath home offers a functional, open layout across three finished levels. The main level features an open kitchen and family room with engineered vinyl plank flooring, recessed lighting, and direct access to a 10' x 10' deck. The kitchen includes an island, quartz countertops, tile backsplash, upgraded cabinetry, and stainless steel appliances. A powder room and breakfast area complete the first floor.

Upstairs, the Owner's Suite includes a walk-in closet and private bath with a double bowl vanity and tile shower. Two additional bedrooms share a full hall bath, and a laundry room is conveniently located on the second floor.

...

Central Dauphin School District

Sales Office Hours

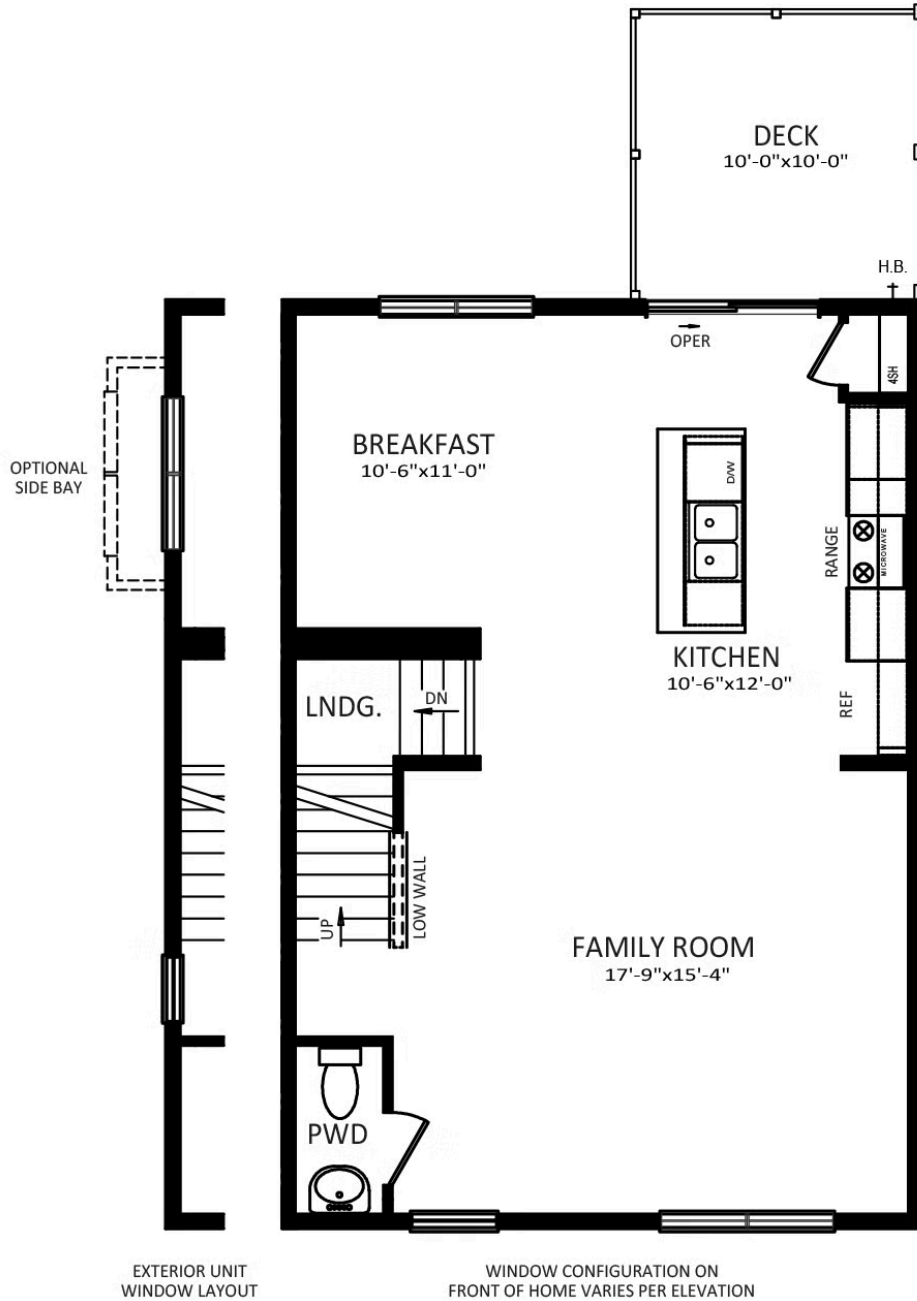
By Appointment: Open Wednesday - Saturday 10:00 am - 5:00 pm | Closed Sundays, Mondays, and Tuesdays



Have Questions? Ask...
KELLY

(484) 772-2693 / bhmarketing@berkshomes.com





FIRST FLOOR

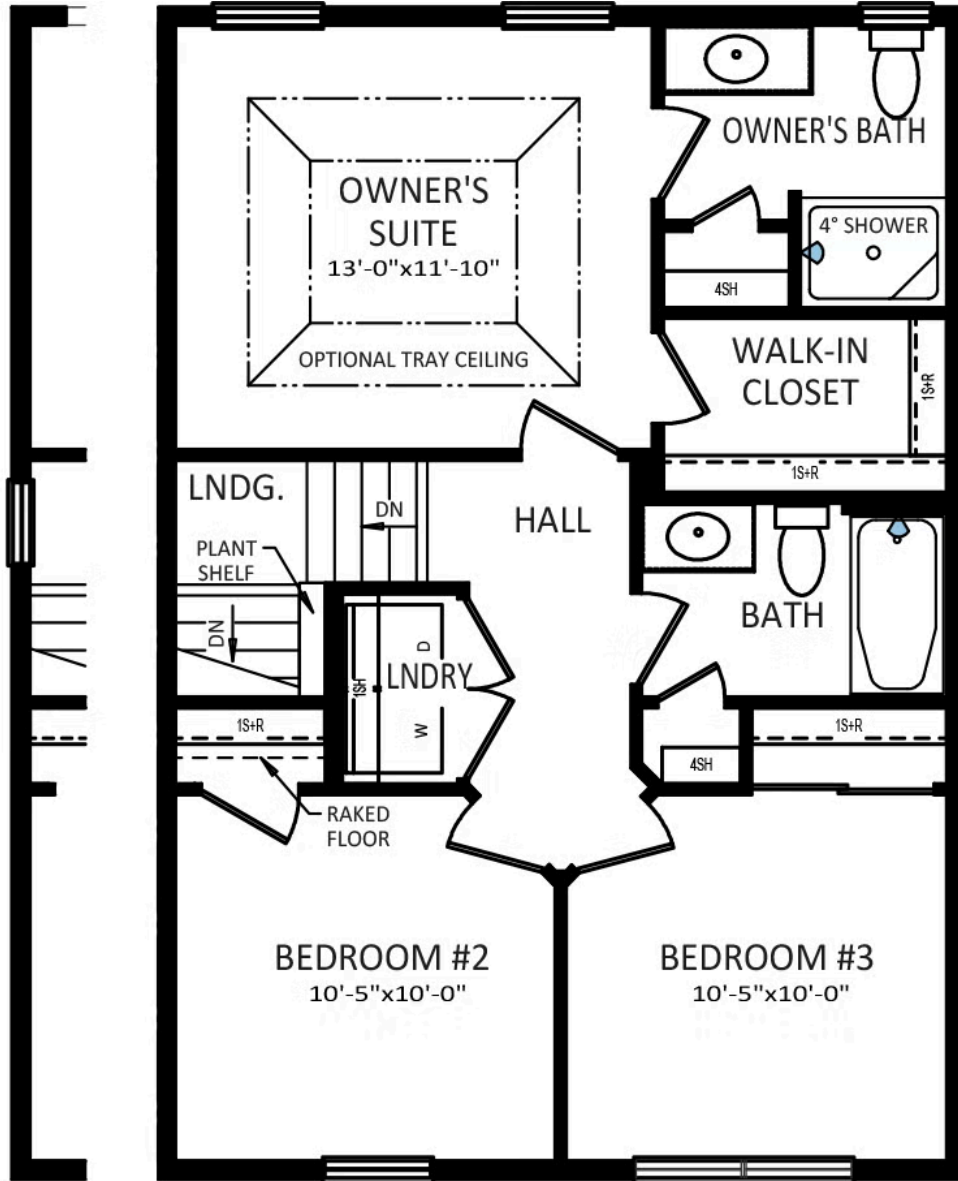
FIRST LEVEL



Have Questions? Ask...
KELLY

(484) 772-2693 / bhmarketing@berkshomes.com





EXTERIOR UNIT
WINDOW LAYOUT

WINDOW CONFIGURATION ON
FRONT OF HOME VARIES PER ELEVATION

SECOND FLOOR

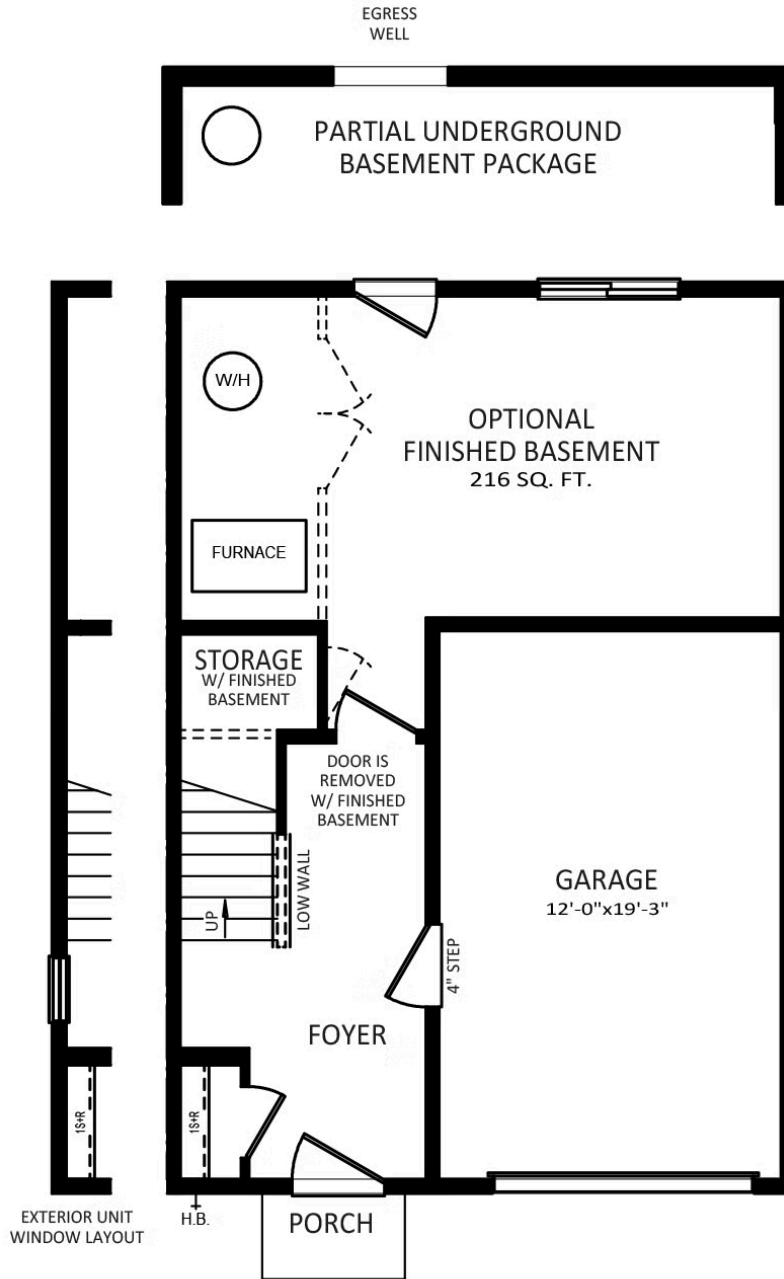
SECOND LEVEL



Have Questions? Ask...
KELLY

(484) 772-2693 / bhmarketing@berkshomes.com





LOWER LEVEL

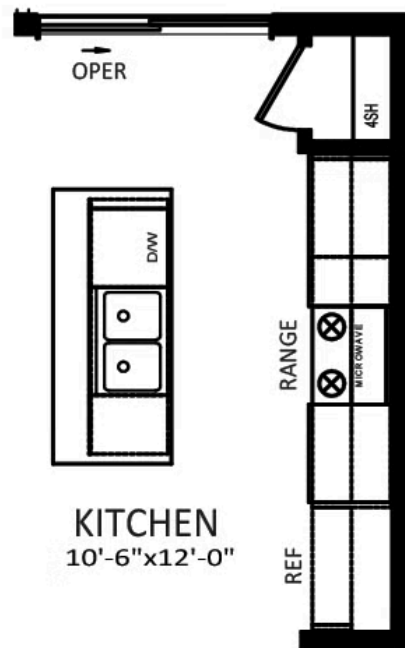
LOWER LEVEL



Have Questions? Ask...
KELLY

(484) 772-2693 / bhmarketing@berkshomes.com





**OPTIONAL
ALTERNATE KITCHEN**

FIRST LEVEL OPTION



Have Questions? Ask...
KELLY

(484) 772-2693 / bhmarketing@berkshomes.com





**OWNER'S BATH
DOUBLE BOWL
VANITY PACKAGE**

SECOND LEVEL OPTION



Have Questions? Ask...
KELLY

(484) 772-2693 / bhmarketing@berkshomes.com

