



QUICK MOVE-IN

FLOORPLAN

Iris

COMMUNITY

Elizabeth Village



**3
Beds**



**2.5
Baths**



**1-Car
Garage**



**1369
Sq. Ft.**

This thoughtfully designed home offers a layout that makes everyday living feel easy and connected. The main level features engineered vinyl plank flooring throughout and an open family room with recessed lighting that flows right into the upgraded kitchen. The kitchen is equipped with a central island, quartz countertops, tile backsplash, upgraded cabinetry, stainless steel appliances, under-cabinet lighting, and recessed lighting. Upstairs, the owner's suite includes a private bath with a double bowl vanity, while two additional bedrooms, a full bath, and a conveniently located laundry area complete the second floor. Downstairs, the finished basement adds valuable extra living space, perfect for a home office, media room, or flexible hangout area.

Central Dauphin School District

Sales Office Hours

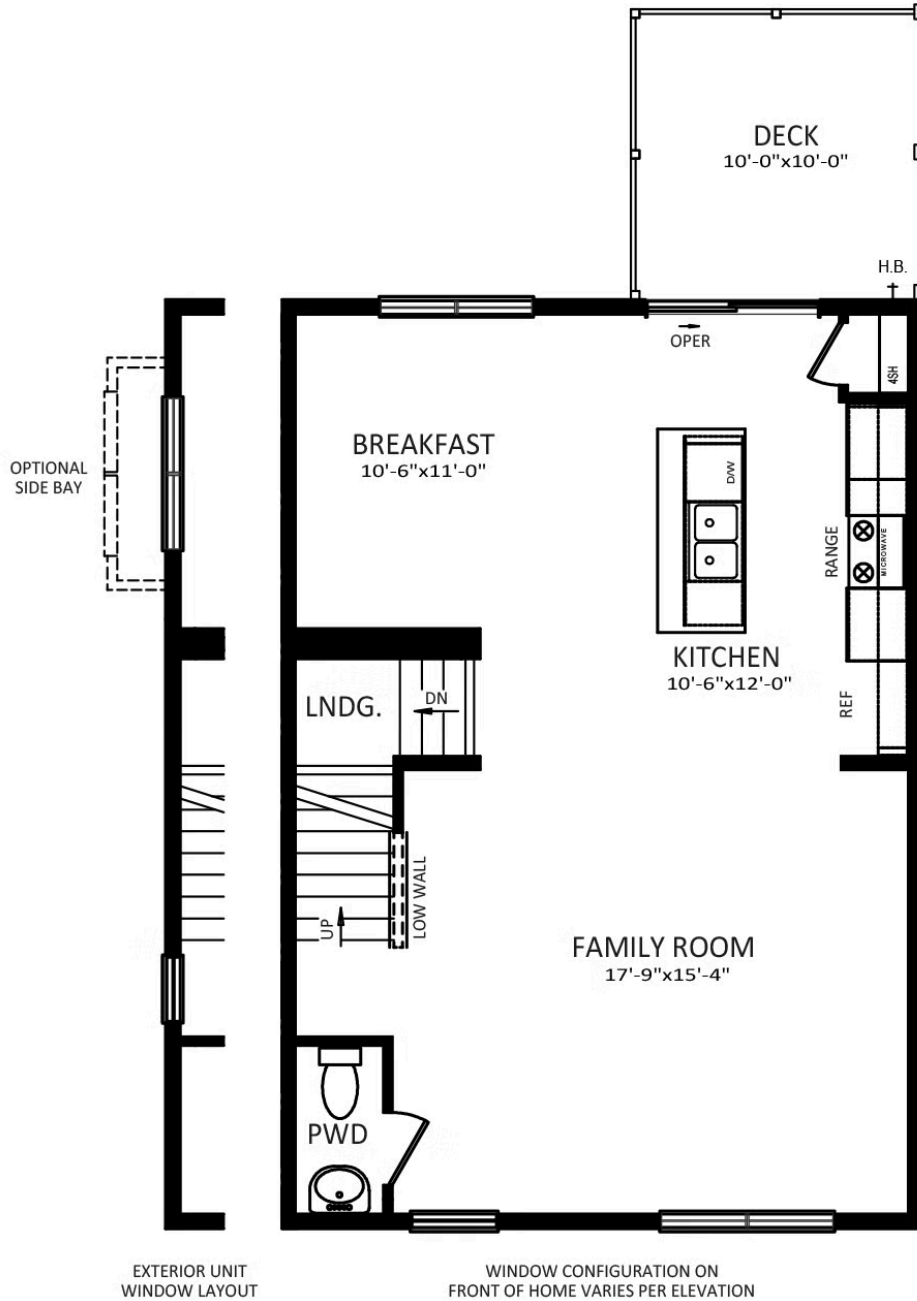
By Appointment: Open Wednesday - Saturday 10:00 am - 5:00 pm | Closed Sundays, Mondays, and Tuesdays



Have Questions? Ask...
KELLY

(484) 772-2693 / bhmarketing@berkshomes.com





FIRST FLOOR

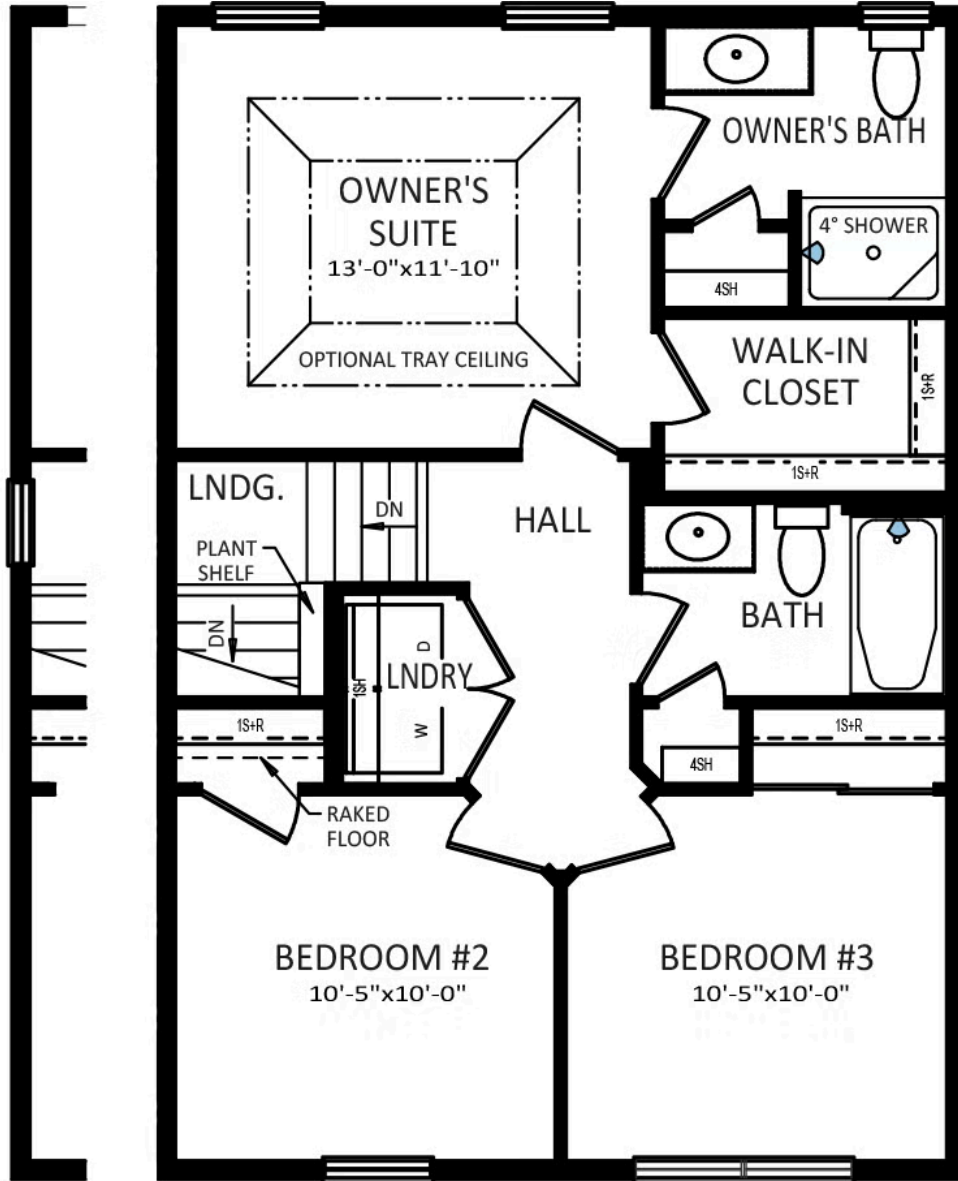
FIRST LEVEL



Have Questions? Ask...
KELLY

(484) 772-2693 / bhmarketing@berkshomes.com





EXTERIOR UNIT
WINDOW LAYOUT

WINDOW CONFIGURATION ON
FRONT OF HOME VARIES PER ELEVATION

SECOND FLOOR

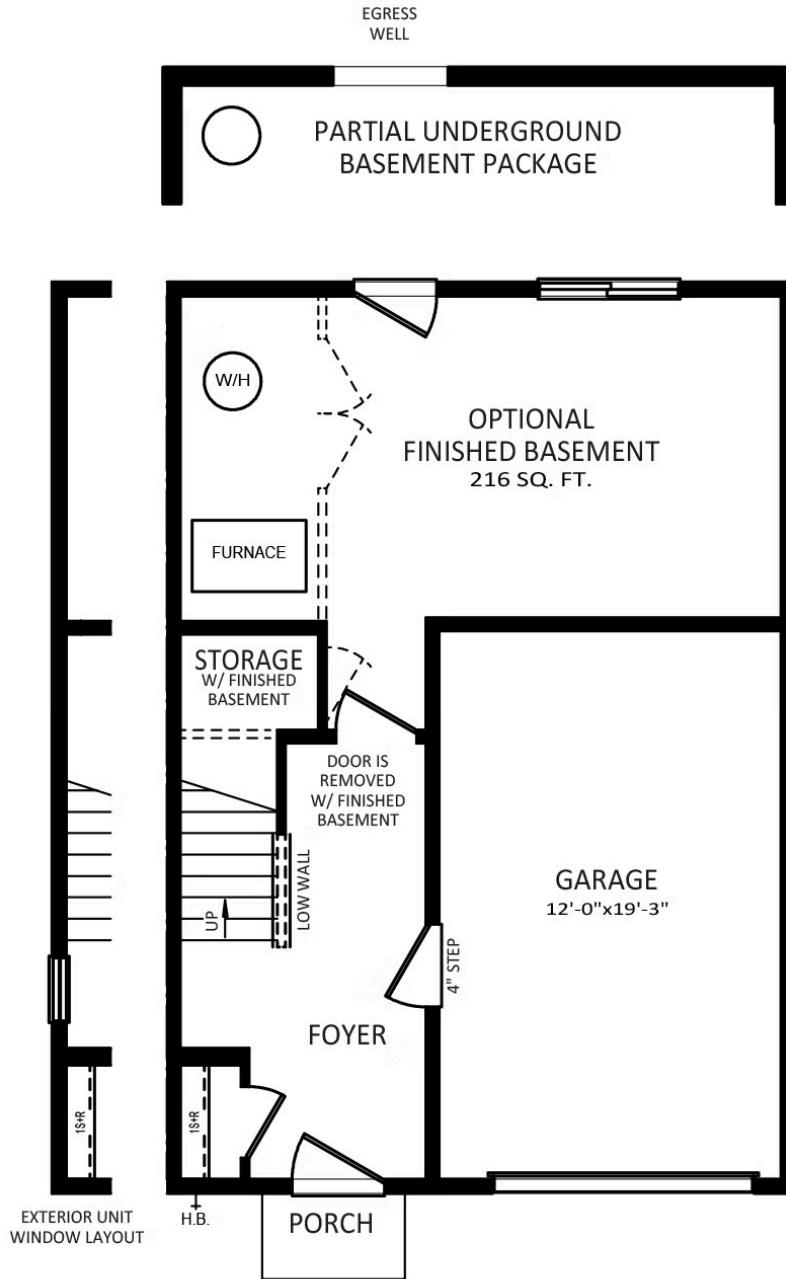
SECOND LEVEL



Have Questions? Ask...
KELLY

(484) 772-2693 / bhmarketing@berkshomes.com





LOWER LEVEL

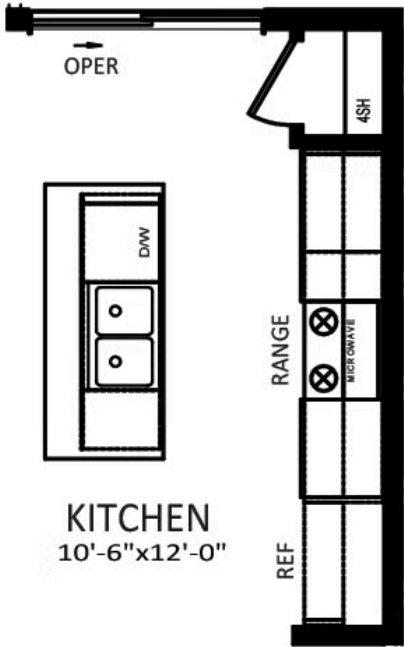
LOWER LEVEL



Have Questions? Ask...
KELLY

(484) 772-2693 / bhmarketing@berkshomes.com





**OPTIONAL
ALTERNATE KITCHEN**

FIRST LEVEL OPTION



Have Questions? Ask...
KELLY

(484) 772-2693 / bhmarketing@berkshomes.com





**OWNER'S BATH
DOUBLE BOWL
VANITY PACKAGE**

SECOND LEVEL OPTION



Have Questions? Ask...
KELLY

(484) 772-2693 / bhmarketing@berkshomes.com

