



REPRESENTATIVE PHOTO

QUICK MOVE-IN

FLOORPLAN

Iris

COMMUNITY

Elizabeth Village



**3
Beds**



**2.5
Baths**



**1-Car
Garage**



**1369
Sq. Ft.**



REPRESENTATIVE PHOTO

This home features a well-organized layout with added finished space and upgraded finishes throughout. The main level offers an open kitchen, breakfast area, and family room designed for everyday living and easy flow between spaces. The kitchen includes an upgraded package with an island, quartz countertops, tile backsplash, upgraded cabinetry, stainless steel appliances, and recessed lighting. A deck off the breakfast area provides direct access to outdoor space. Engineered vinyl plank flooring extends throughout the main living areas for a cohesive look. The finished basement adds additional living space that can be used for a variety of needs, along with designated storage and utility areas. Upstairs, the owner's suite includes a walk-in closet and a private bath with a double bowl vanity. Tw...



REPRESENTATIVE PHOTO

Central Dauphin School District

Sales Office Hours

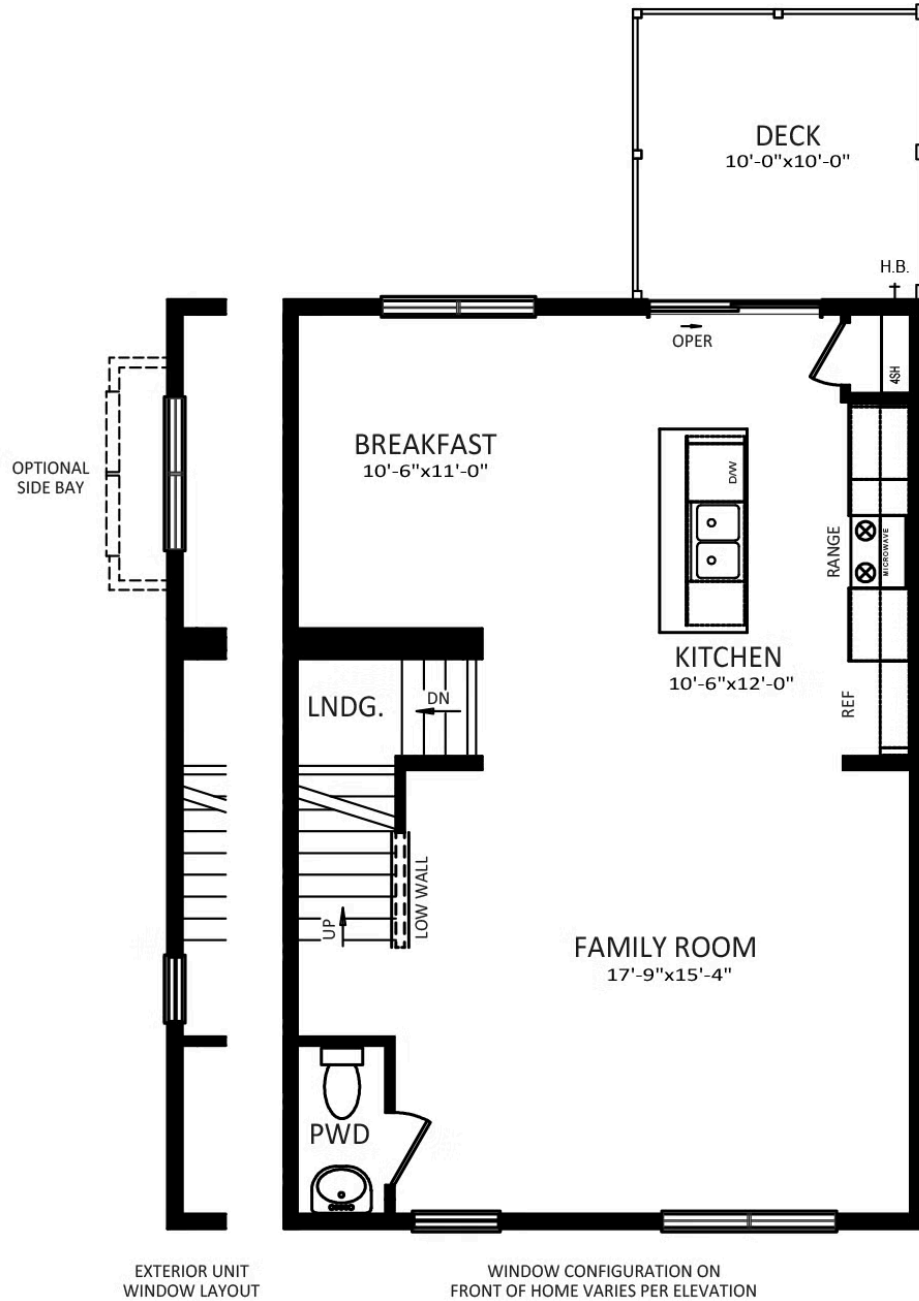
By Appointment: Open Wednesday - Saturday 10:00 am - 5:00 pm | Closed Sundays, Mondays, and Tuesdays



Have Questions? Ask...
KELLY

(484) 772-2693 / bhmarketing@berkshomes.com





FIRST FLOOR

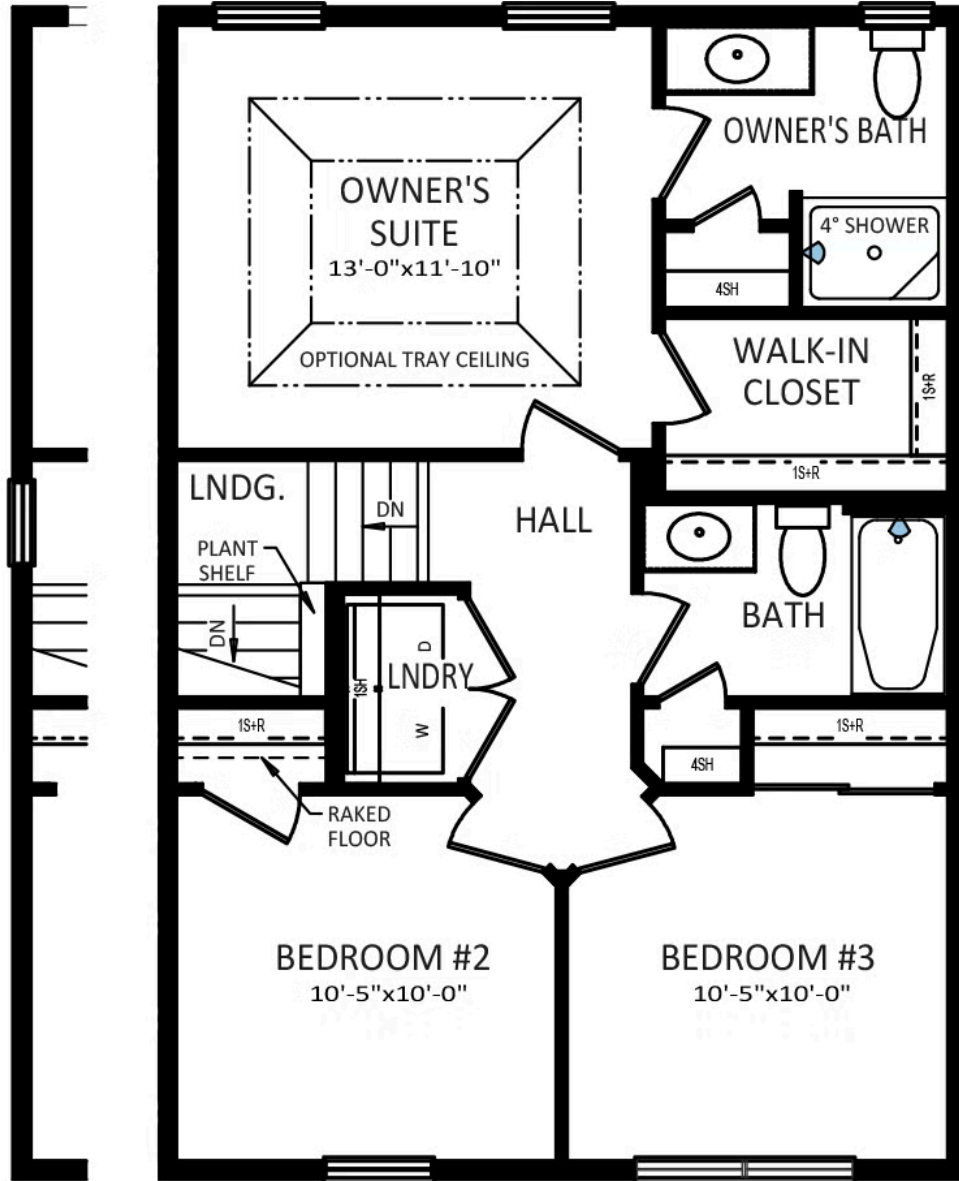
FIRST LEVEL



Have Questions? Ask...
KELLY

(484) 772-2693 / bhmarketing@berkshomes.com





EXTERIOR UNIT
WINDOW LAYOUT

WINDOW CONFIGURATION ON
FRONT OF HOME VARIES PER ELEVATION

SECOND FLOOR

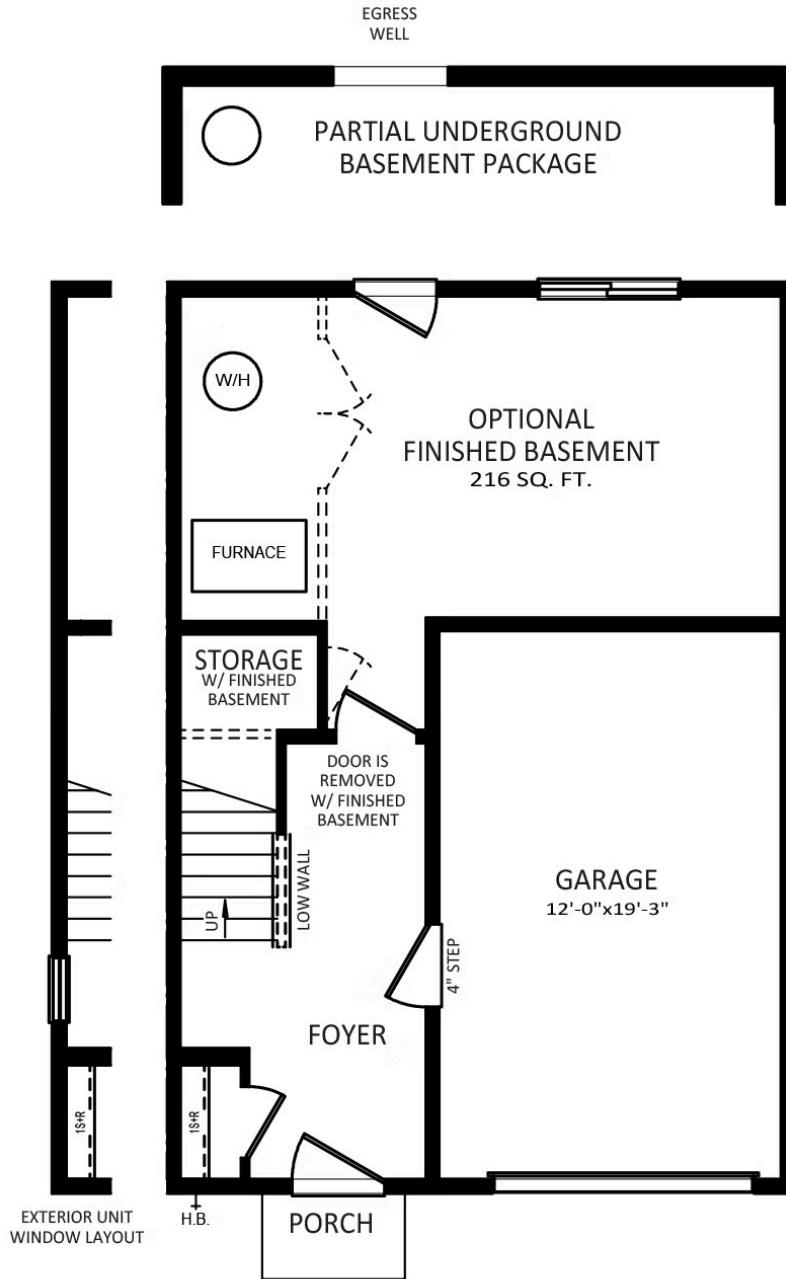
SECOND LEVEL



Have Questions? Ask...
KELLY

(484) 772-2693 / bhmarketing@berkshomes.com





LOWER LEVEL

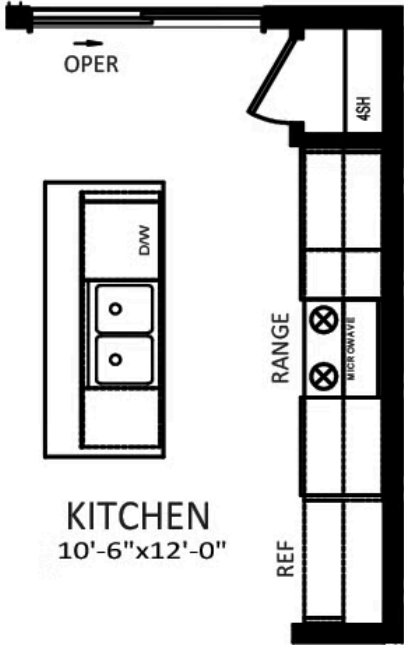
LOWER LEVEL



Have Questions? Ask...
KELLY

(484) 772-2693 / bhmarketing@berkshomes.com





**OPTIONAL
ALTERNATE KITCHEN**

FIRST LEVEL OPTION



Have Questions? Ask...
KELLY

(484) 772-2693 / bhmarketing@berkshomes.com





**OWNER'S BATH
DOUBLE BOWL
VANITY PACKAGE**

SECOND LEVEL OPTION



Have Questions? Ask...
KELLY

(484) 772-2693 / bhmarketing@berkshomes.com

