



REPRESENTATIVE PHOTO

QUICK MOVE-IN

FLOORPLAN

Iris

COMMUNITY

Elizabeth Village



**3
Beds**



**2.5
Baths**



**1-Car
Garage**

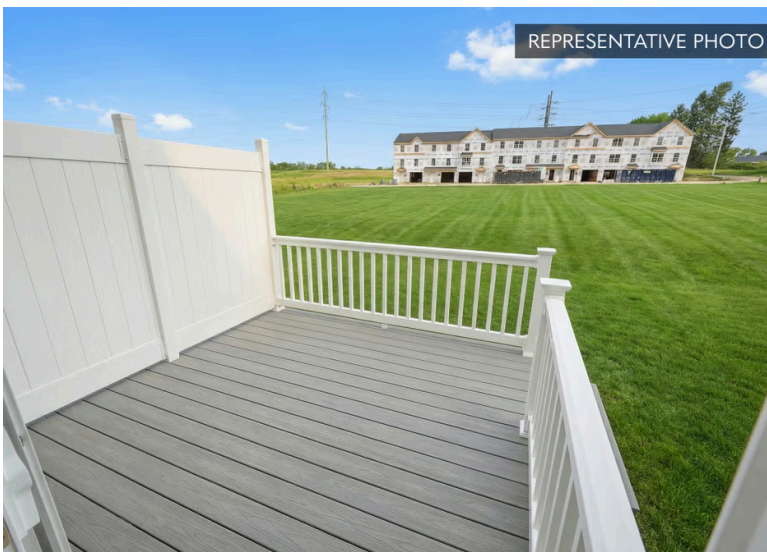


**1385
Sq. Ft.**



REPRESENTATIVE PHOTO

This home offers a practical layout with added living space and upgraded finishes throughout. The main level features an open kitchen, breakfast area, and family room designed for everyday living. The family room includes recessed lighting, while the breakfast area is enhanced with a double bay window that brings in additional natural light. The kitchen is upgraded with an island, quartz countertops, tile backsplash, upgraded cabinetry, stainless steel appliances, under cabinet lighting, and recessed lighting. A deck off the breakfast area provides convenient access to outdoor space. Engineered vinyl plank flooring runs throughout the main living areas for a consistent look. The finished basement expands the home's usable space, offering flexibility for a variety of needs along with storage and utility areas....



REPRESENTATIVE PHOTO

Central Dauphin School District

Sales Office Hours

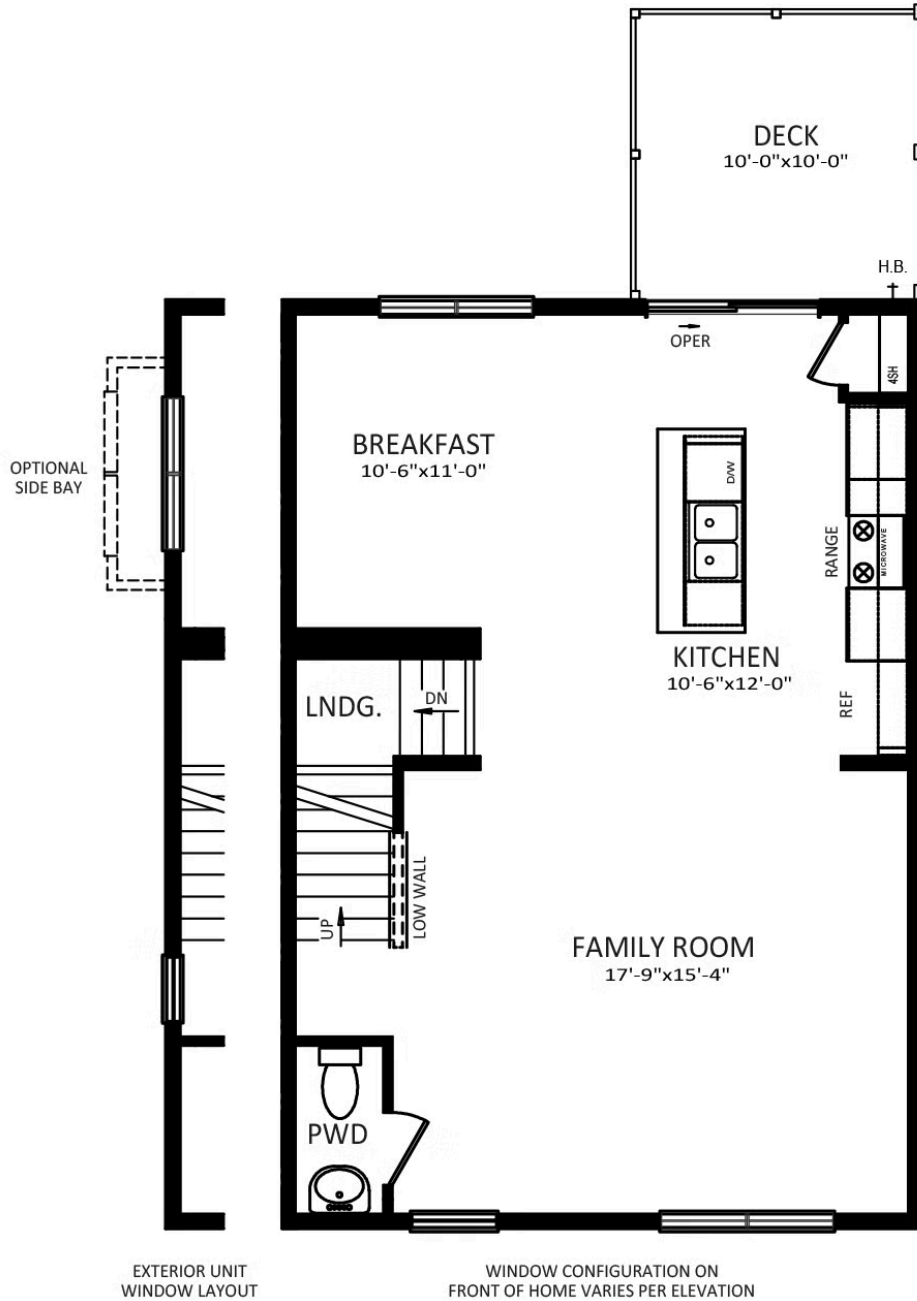
By Appointment: Open Wednesday - Saturday 10:00 am - 5:00 pm | Closed Sundays, Mondays, and Tuesdays



Have Questions? Ask...
KELLY

(484) 772-2693 / bhmarketing@berkshomes.com





FIRST FLOOR

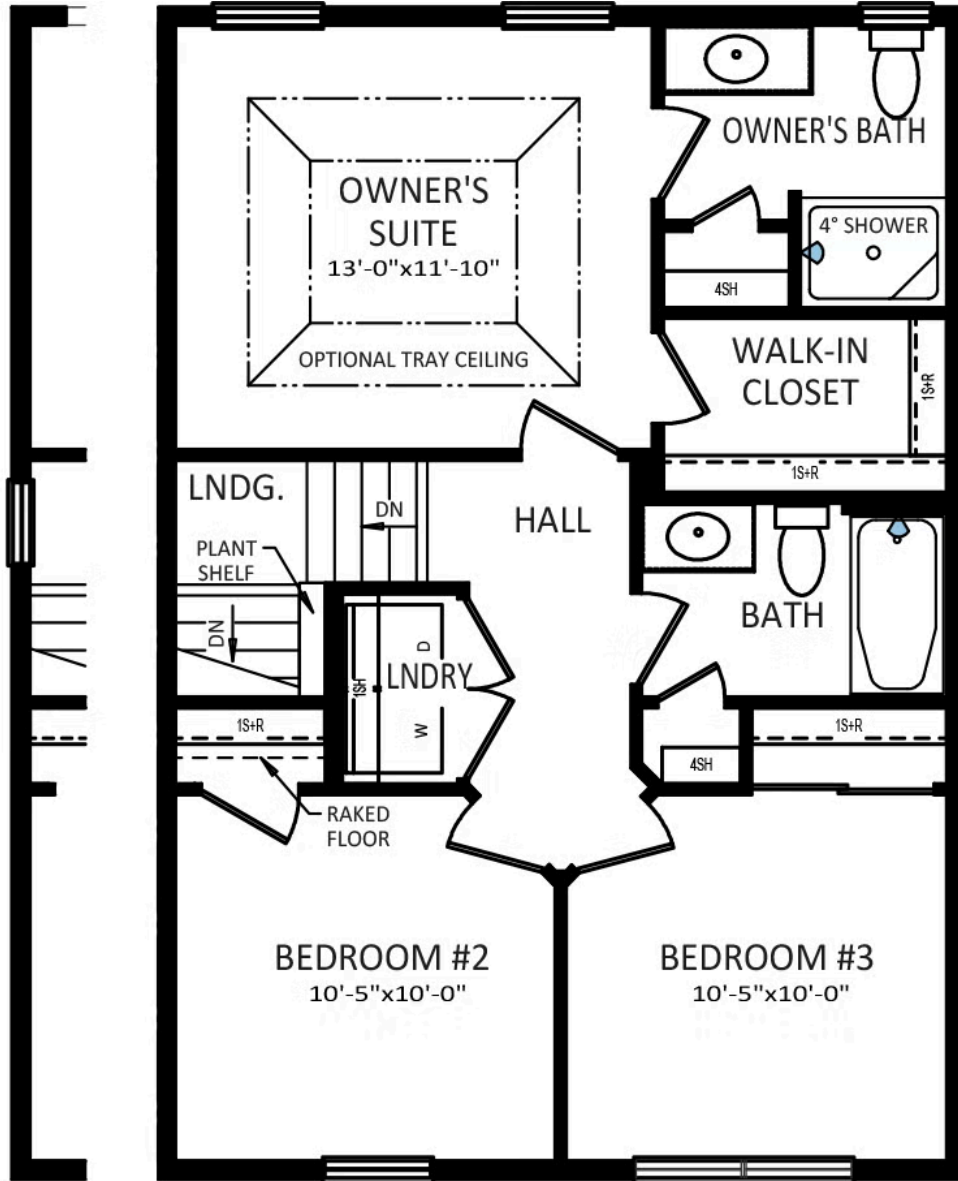
FIRST LEVEL



Have Questions? Ask...
KELLY

(484) 772-2693 / bhmarketing@berkshomes.com





EXTERIOR UNIT
WINDOW LAYOUT

WINDOW CONFIGURATION ON
FRONT OF HOME VARIES PER ELEVATION

SECOND FLOOR

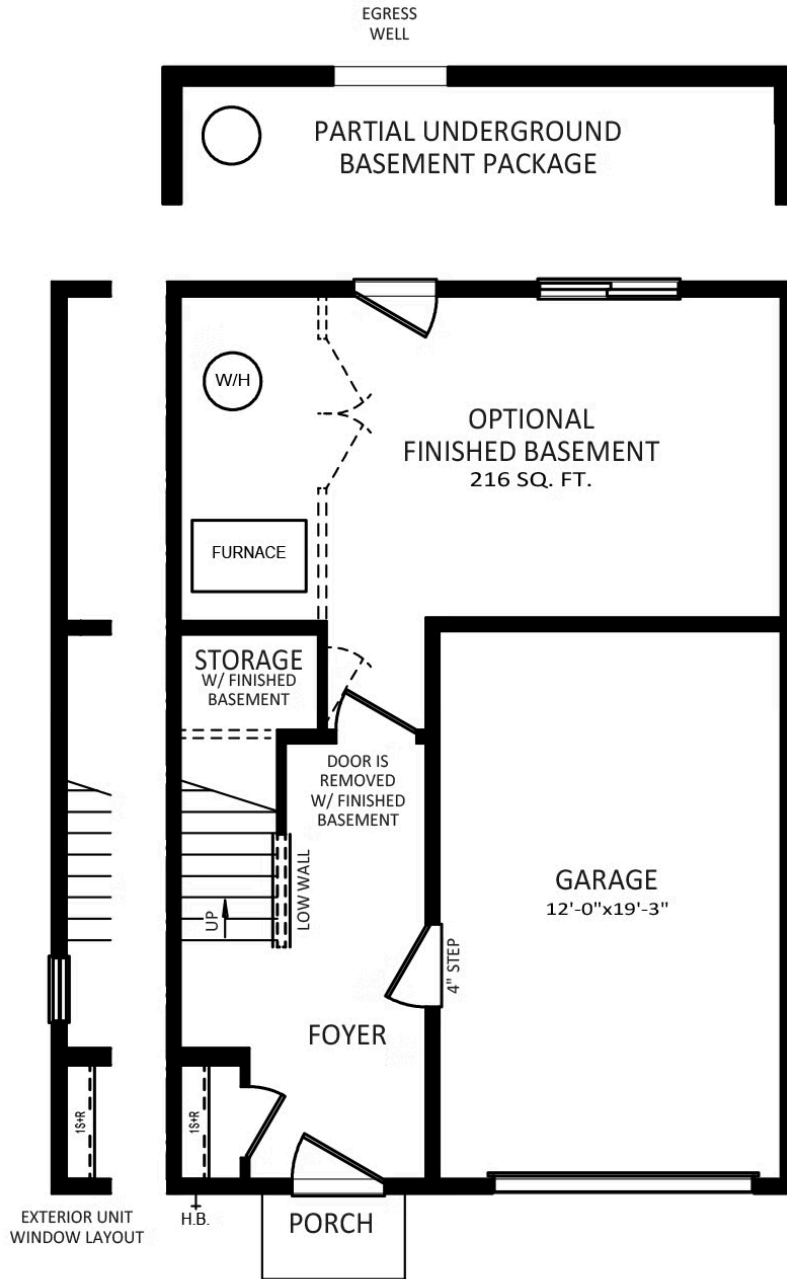
SECOND LEVEL



Have Questions? Ask...
KELLY

(484) 772-2693 / bhmarketing@berkshomes.com





LOWER LEVEL

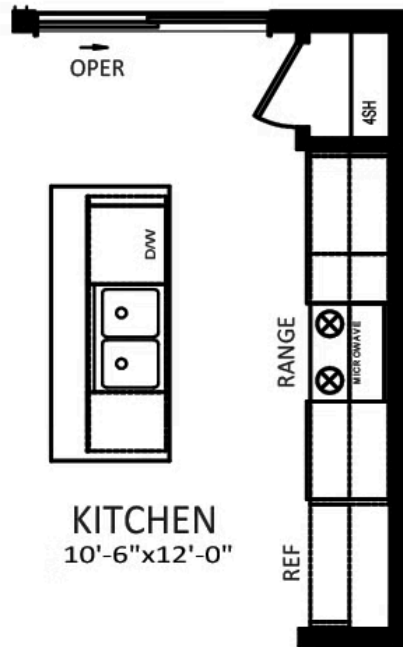
LOWER LEVEL



Have Questions? Ask...
KELLY

(484) 772-2693 / bhmarketing@berkshomes.com





**OPTIONAL
ALTERNATE KITCHEN**

FIRST LEVEL OPTION



Have Questions? Ask...
KELLY

(484) 772-2693 / bhmarketing@berkshomes.com





**OWNER'S BATH
DOUBLE BOWL
VANITY PACKAGE**

SECOND LEVEL OPTION



Have Questions? Ask...
KELLY

(484) 772-2693 / bhmarketing@berkshomes.com

