



COMMUNITY
Elizabeth Village

PRICED FROM
\$399,990



**3
Beds**



**2.5
Baths**



**2-Car
Garage**



1,785

-

**2,531
Sq. Ft.**

Welcome to the Jasmine — a thoughtfully designed home that effortlessly combines style and functionality. Step into the inviting foyer, where a convenient powder room is tucked to the side, perfect for guests. As you move further inside, the space opens into a beautifully connected kitchen and family room, ideal for both everyday living and entertaining. Just off the kitchen, you'll find a dedicated laundry area, making household tasks a breeze. The family room leads to the spacious primary suite, offering a private retreat with comfort and convenience in mind. Upstairs, a versatile loft provides a second living area, great for a home office, playroom, or media space. Two additional bedrooms and a full hall bath complete the upper level, providing plenty of room for family or guests. The Jasmine is designed to make you feel at home the moment you walk in.

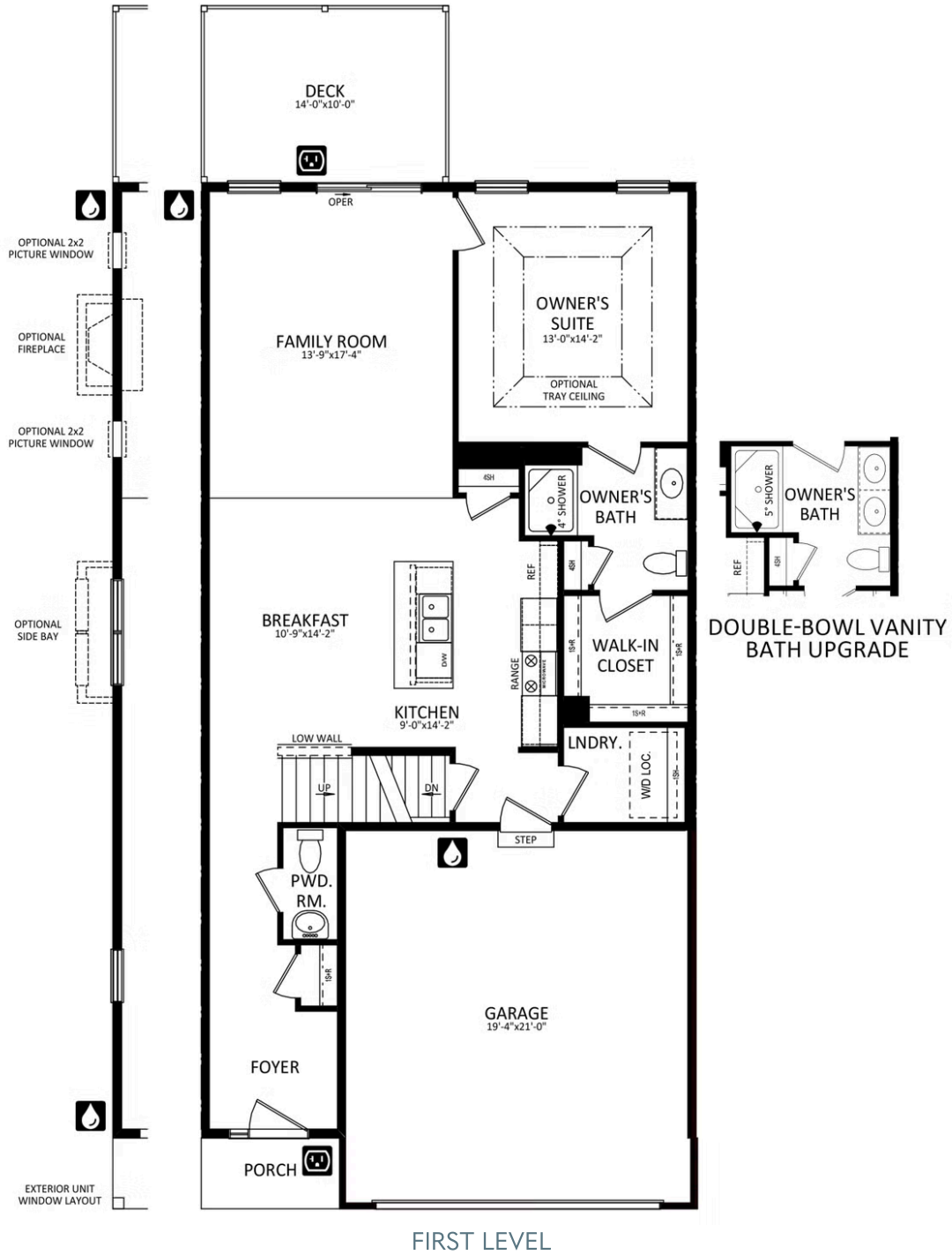


Have Questions? Ask...

KELLY

(484) 772-2693 / bhmarketing@berkshomes.com



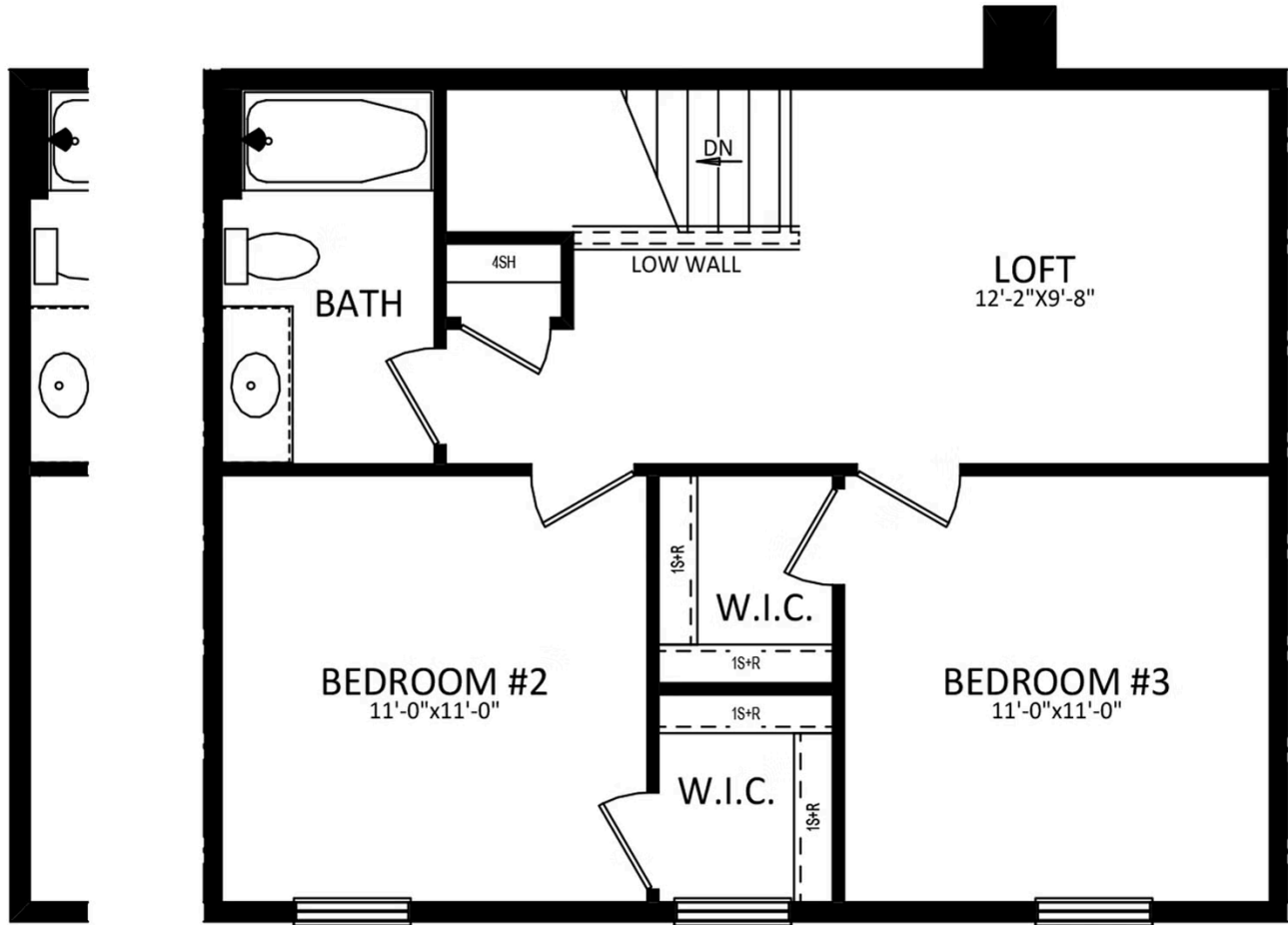


Have Questions? Ask...

KELLY

(484) 772-2693 / bhmarketing@berkshomes.com





EXTERIOR UNIT
WINDOW LAYOUT

WINDOW CONFIGURATION ON
FRONT OF HOME VARIES PER ELEVATION

SECOND LEVEL

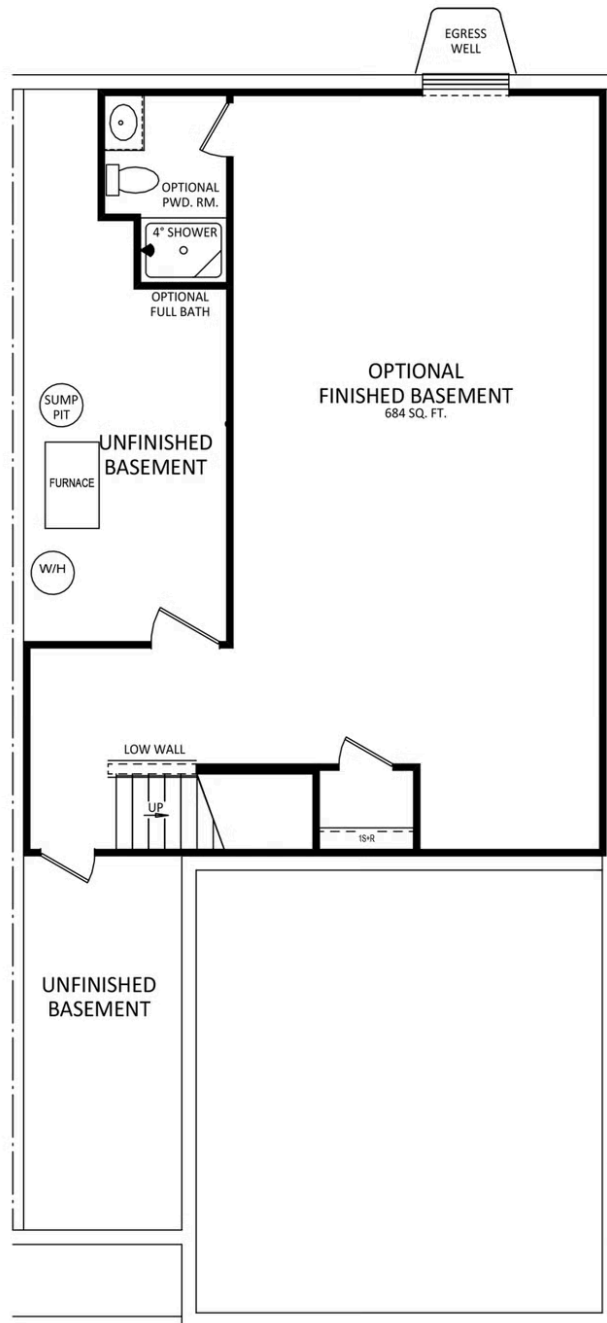


Have Questions? Ask...

KELLY

(484) 772-2693 / bhmarketing@berkshomes.com





LOWER LEVEL

Have Questions? Ask...

KELLY

(484) 772-2693 / bhmarketing@berkshomes.com

