



COMMUNITY  
**Elizabeth Village**

PRICED FROM  
**\$399,990**



**3  
Beds**



**2.5  
Baths**



**2-Car  
Garage**



1,785

-

**2,531  
Sq. Ft.**

Welcome to the Jasmine — a thoughtfully designed home that effortlessly combines style and functionality. Step into the inviting foyer, where a convenient powder room is tucked to the side, perfect for guests. As you move further inside, the space opens into a beautifully connected kitchen and family room, ideal for both everyday living and entertaining. Just off the kitchen, you'll find a dedicated laundry area, making household tasks a breeze. The family room leads to the spacious primary suite, offering a private retreat with comfort and convenience in mind. Upstairs, a versatile loft provides a second living area, great for a home office, playroom, or media space. Two additional bedrooms and a full hall bath complete the upper level, providing plenty of room for family or guests. The Jasmine is designed to make you feel at home the moment you walk in.

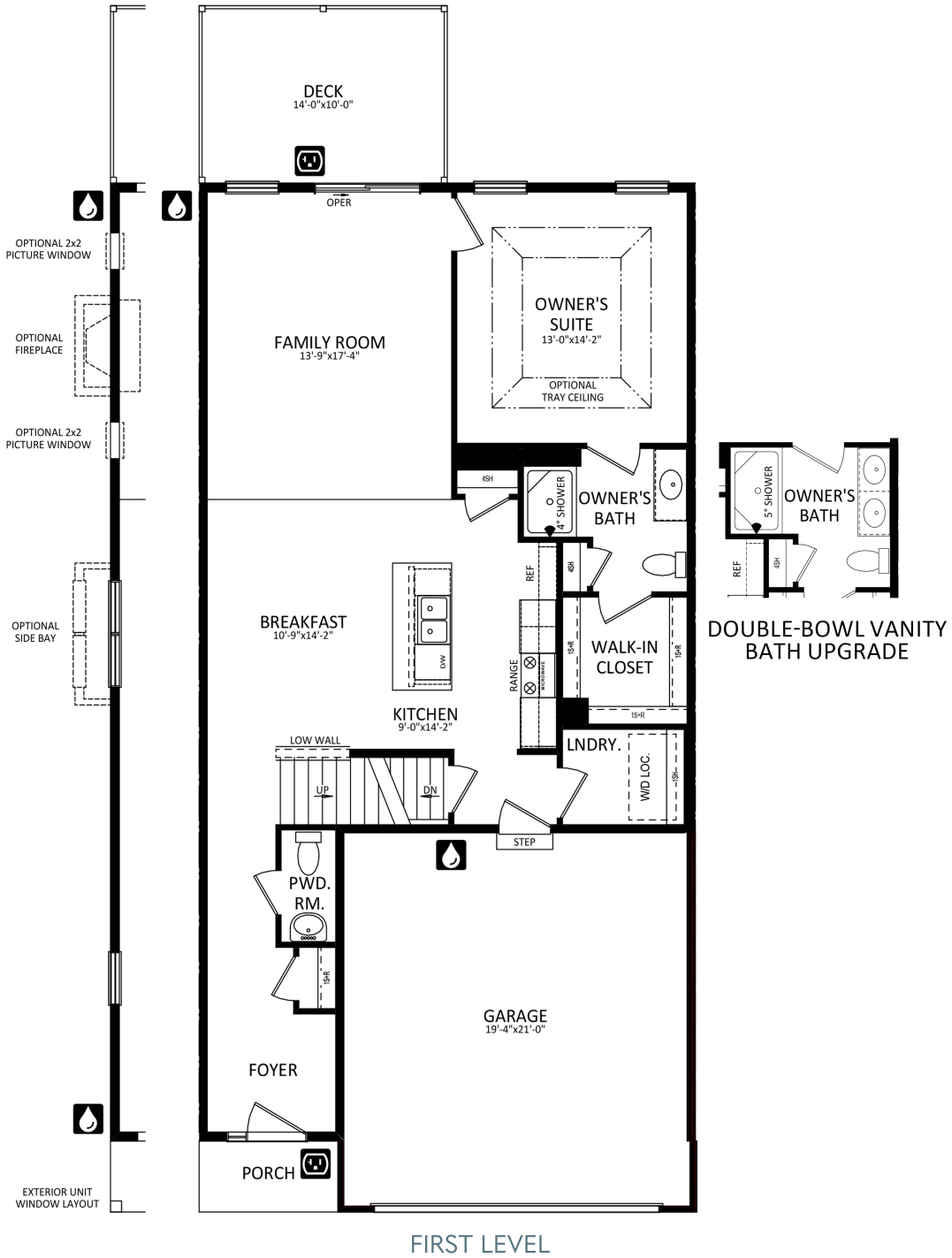


**Have Questions? Ask...**

**KELLY**

(484) 772-2693 / [bhmarketing@berkshomes.com](mailto:bhmarketing@berkshomes.com)



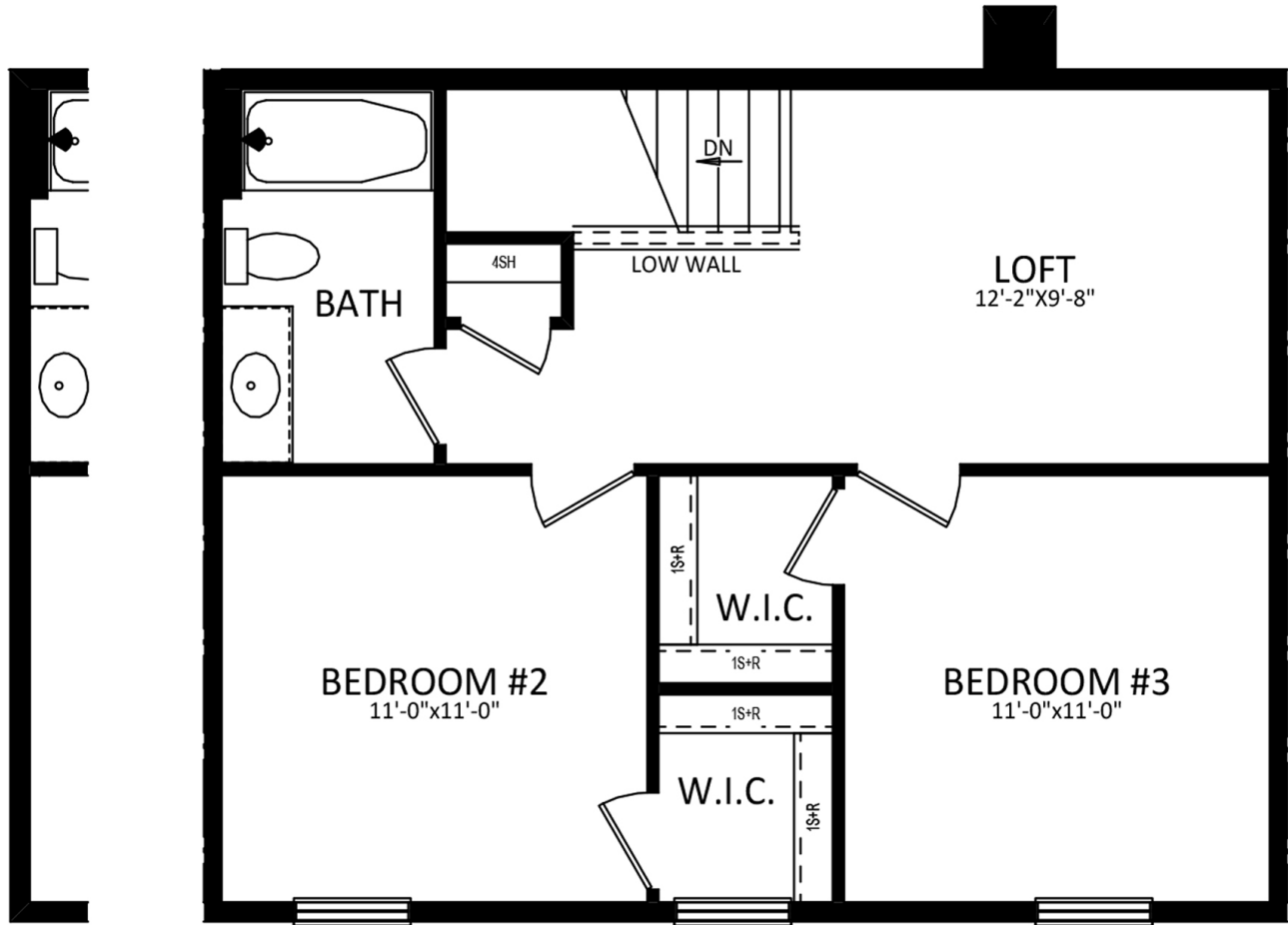


**Have Questions? Ask...**

**KELLY**

(484) 772-2693 / [bhmarketing@berkshomes.com](mailto:bhmarketing@berkshomes.com)





EXTERIOR UNIT  
WINDOW LAYOUT

WINDOW CONFIGURATION ON  
FRONT OF HOME VARIES PER ELEVATION

SECOND LEVEL

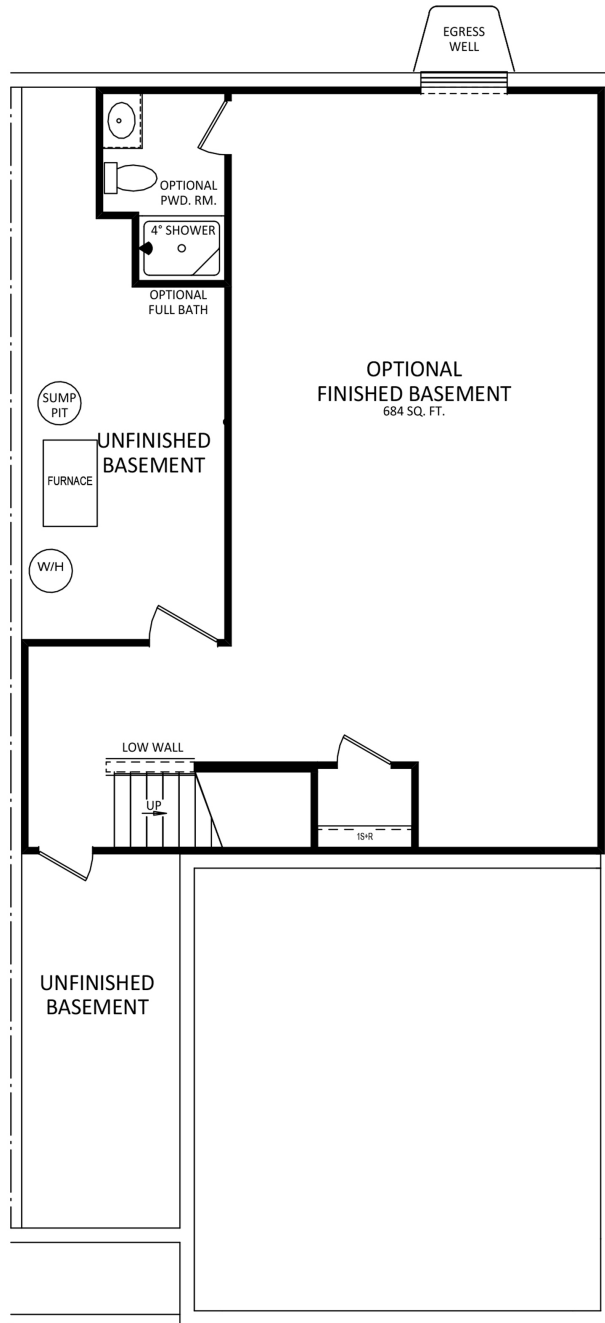


**Have Questions? Ask...**

KELLY

(484) 772-2693 / [bhmarketing@berkshomes.com](mailto:bhmarketing@berkshomes.com)





LOWER LEVEL



**Have Questions? Ask...**

KELLY

(484) 772-2693 / [bhmarketing@berkshomes.com](mailto:bhmarketing@berkshomes.com)

