

QUICK MOVE-IN

FLOORPLAN

Jasmine

COMMUNITY

Elizabeth Village



**3
Beds**



**3.5
Baths**



**2-Car
Garage**



**2518
Sq. Ft.**

Buyers who use our preferred partners will receive up to a \$10,000 credit in the Selection Gallery to apply toward interior finishes. The home's structural features are already in place, allowing you to focus on selecting the finishes that best fit your personal style. All interior selections must be completed by June 18th, 2026.

This thoughtfully designed two-story home offers the space, function, and flow that today's families are looking for — and with your interior selections still ahead, you have the opportunity to make it truly yours.

The main level sets the tone with an open, connected layout built for everyday living. A welcoming foyer greets you at the entry, leading into a spacious kitchen that...

Central Dauphin School District

Sales Office Hours

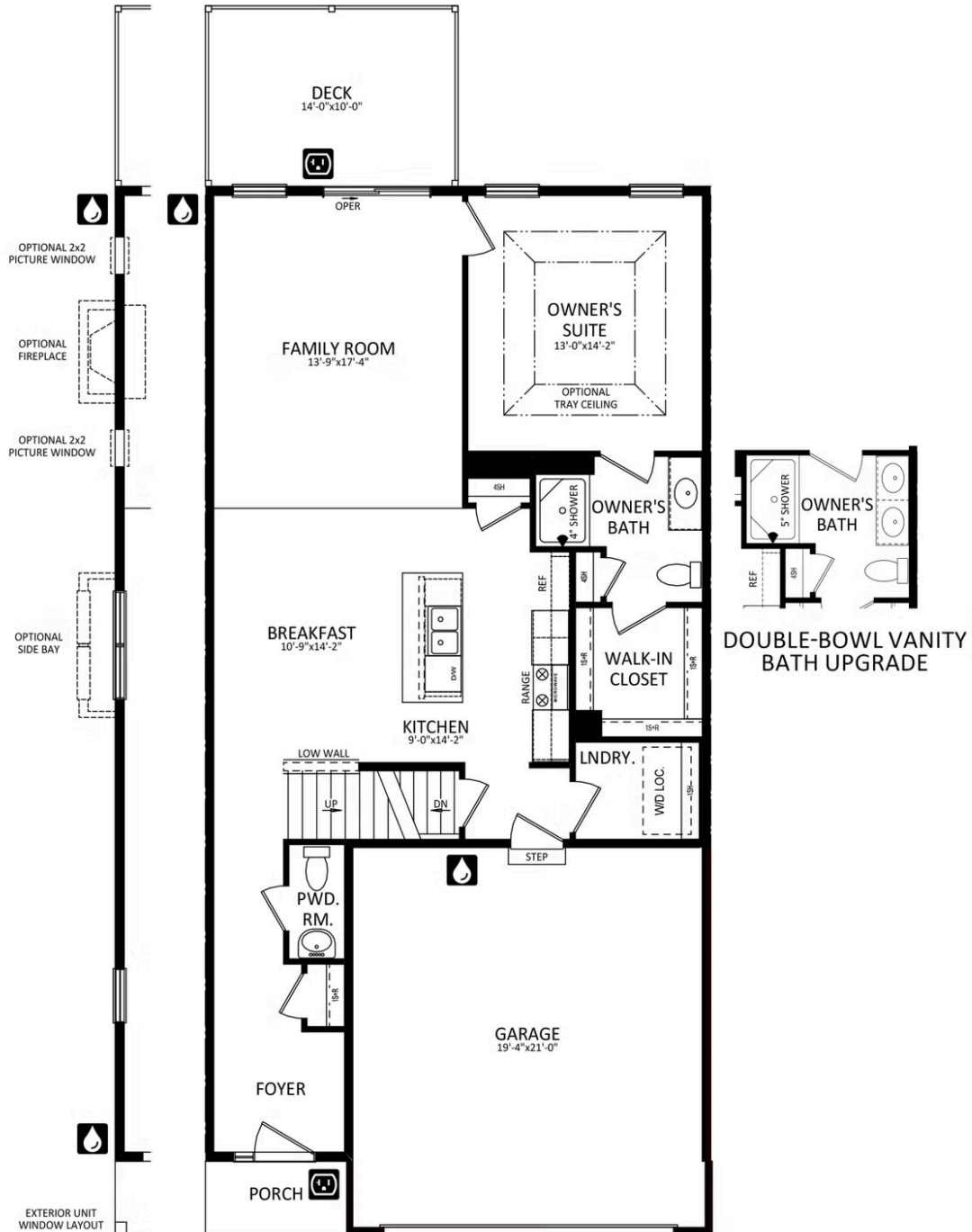
By Appointment: Open Wednesday - Saturday 10:00 am - 5:00 pm | Closed Sundays, Mondays, and Tuesdays



Have Questions? Ask...
KELLY

(484) 772-2693 / bhmarketing@berkshomes.com

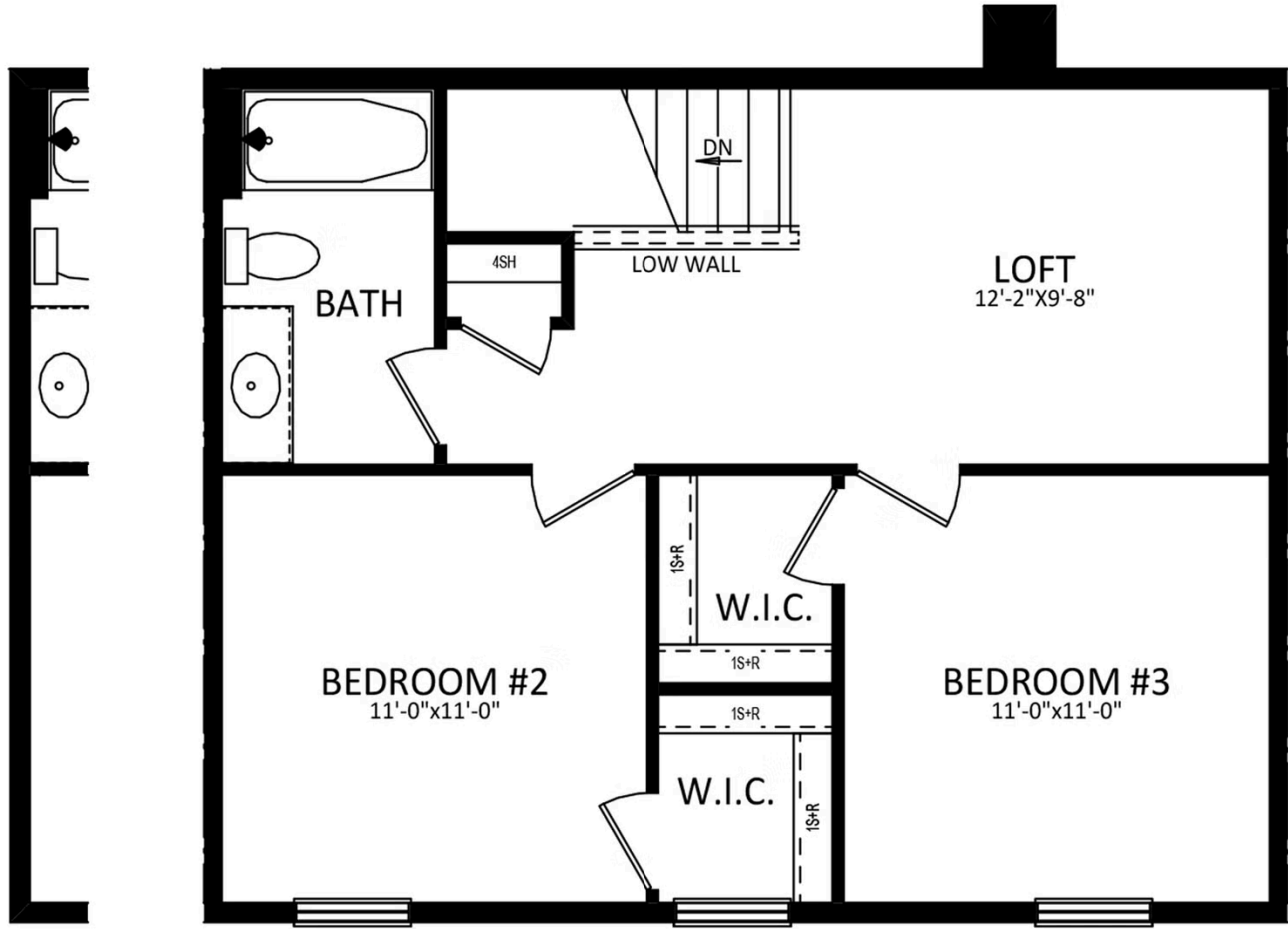




Have Questions? Ask...
KELLY

(484) 772-2693 / bhmarketing@berkshomes.com





EXTERIOR UNIT
WINDOW LAYOUT

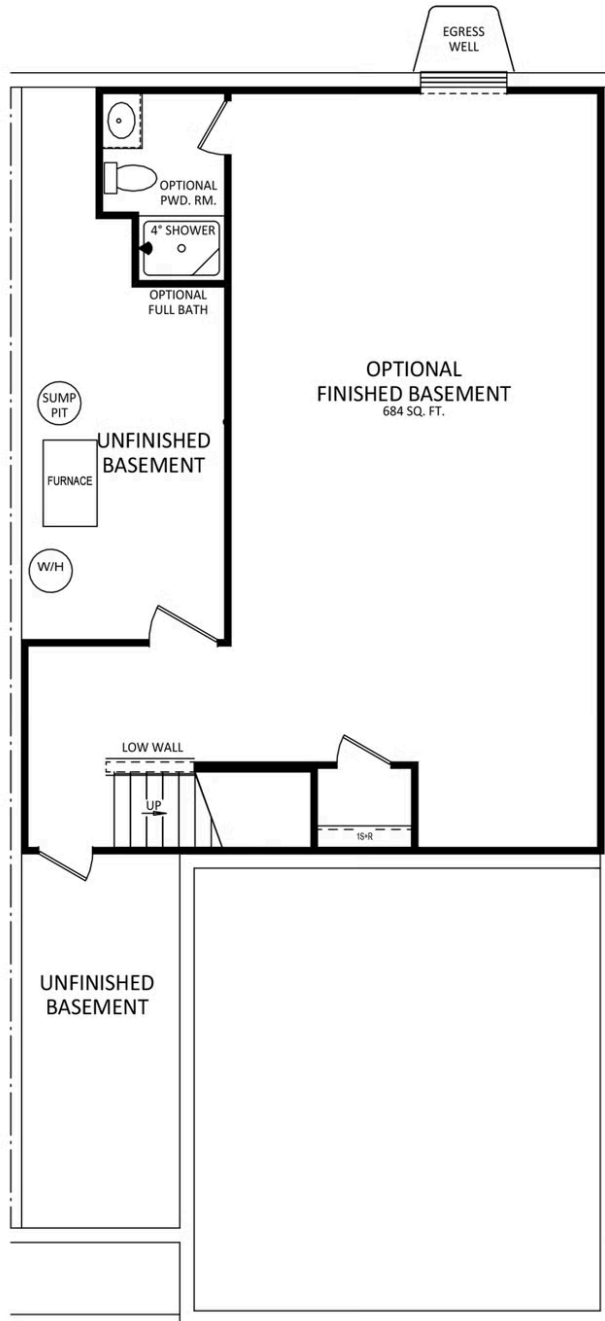
WINDOW CONFIGURATION ON
FRONT OF HOME VARIES PER ELEVATION



Have Questions? Ask...
KELLY

(484) 772-2693 / bhmarketing@berkshomes.com





Have Questions? Ask...
KELLY

(484) 772-2693 / bhmarketing@berkshomes.com

