

QUICK MOVE-IN

FLOORPLAN

Jasmine

COMMUNITY

Elizabeth Village



**3
Beds**



**3.5
Baths**



**2-Car
Garage**



**2518
Sq. Ft.**

This home offers a functional layout with thoughtful upgrades throughout. The main level features an open kitchen, breakfast area, and family room, creating a connected space for everyday living. The upgraded kitchen includes an island, quartz countertops, tile backsplash, upgraded cabinetry, stainless steel appliances, and recessed lighting. Engineered vinyl plank flooring runs throughout the first floor and continues into the owner's bath. The owner's suite is conveniently located on the main level and includes a private bath with a double vanity and tile shower, along with a walk-in closet. A laundry area and access to the garage are also located on the first floor for added convenience. Upstairs, a loft with recessed lighting provides additional living space, along with two secondary bedrooms and a...

Central Dauphin School District

Sales Office Hours

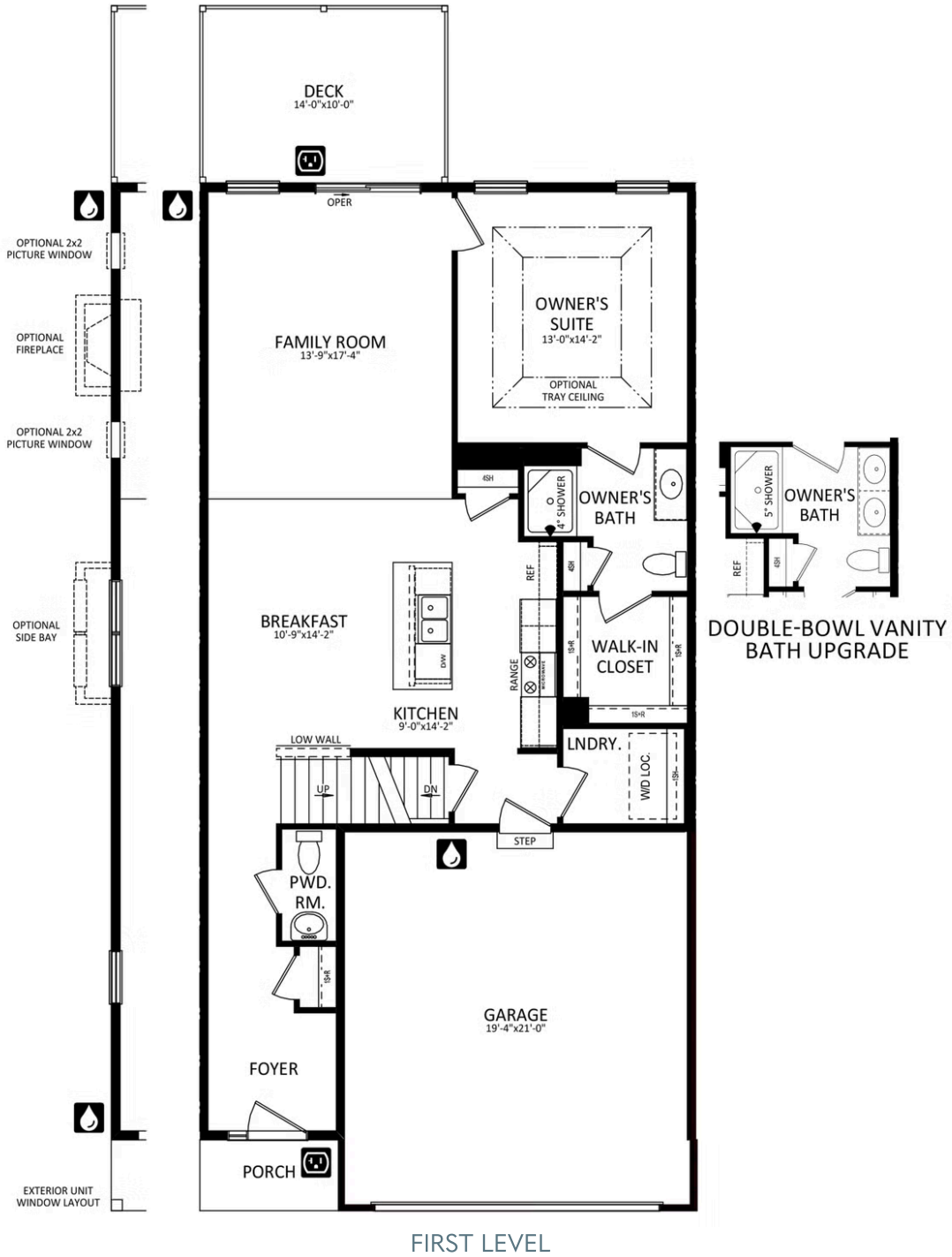
By Appointment: Open Wednesday - Saturday 10:00 am - 5:00 pm | Closed Sundays, Mondays, and Tuesdays



Have Questions? Ask...
KELLY

(484) 772-2693 / bhmarketing@berkshomes.com

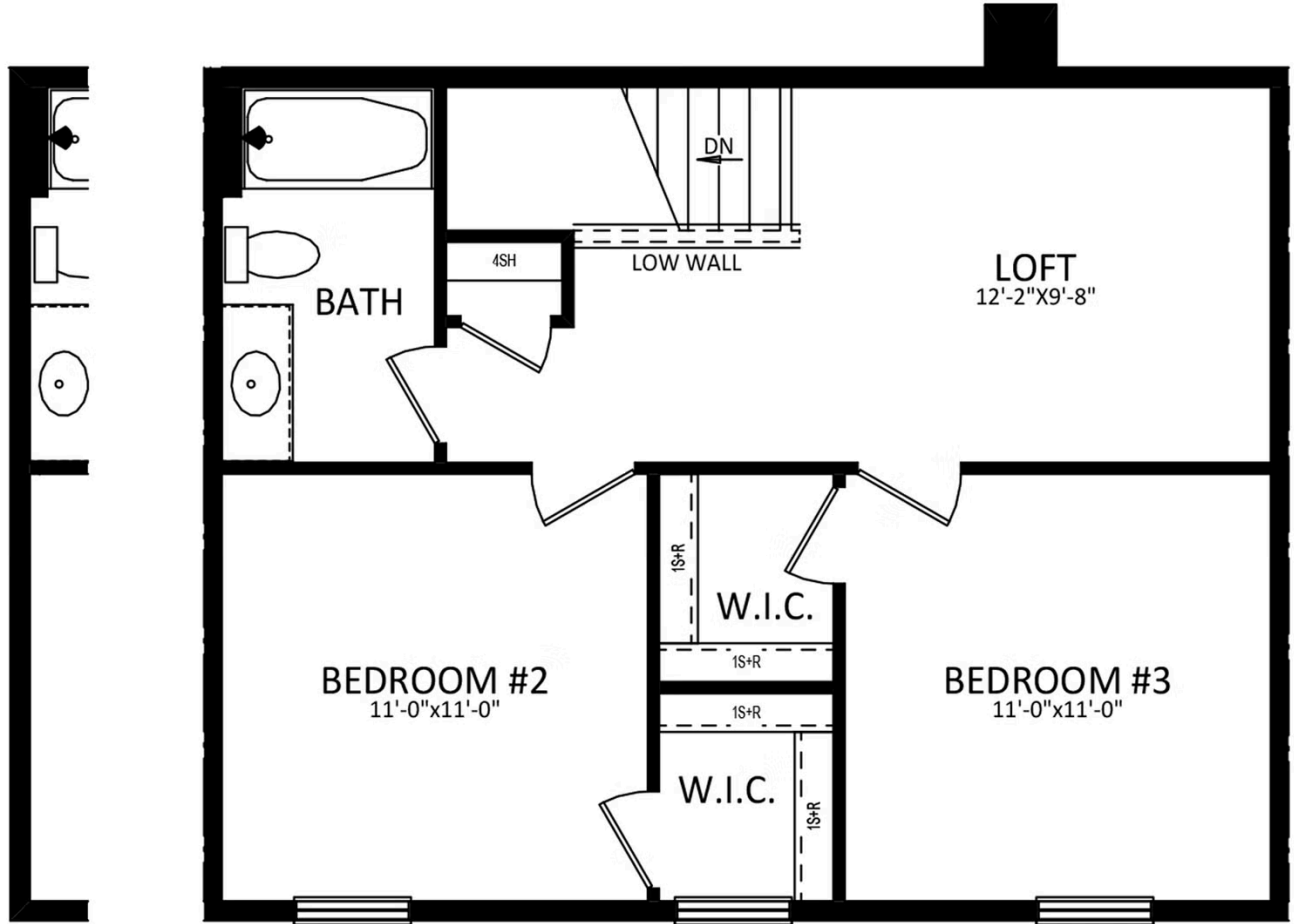




Have Questions? Ask...
KELLY

(484) 772-2693 / bhmarketing@berkshomes.com





EXTERIOR UNIT
WINDOW LAYOUT

WINDOW CONFIGURATION ON
FRONT OF HOME VARIES PER ELEVATION

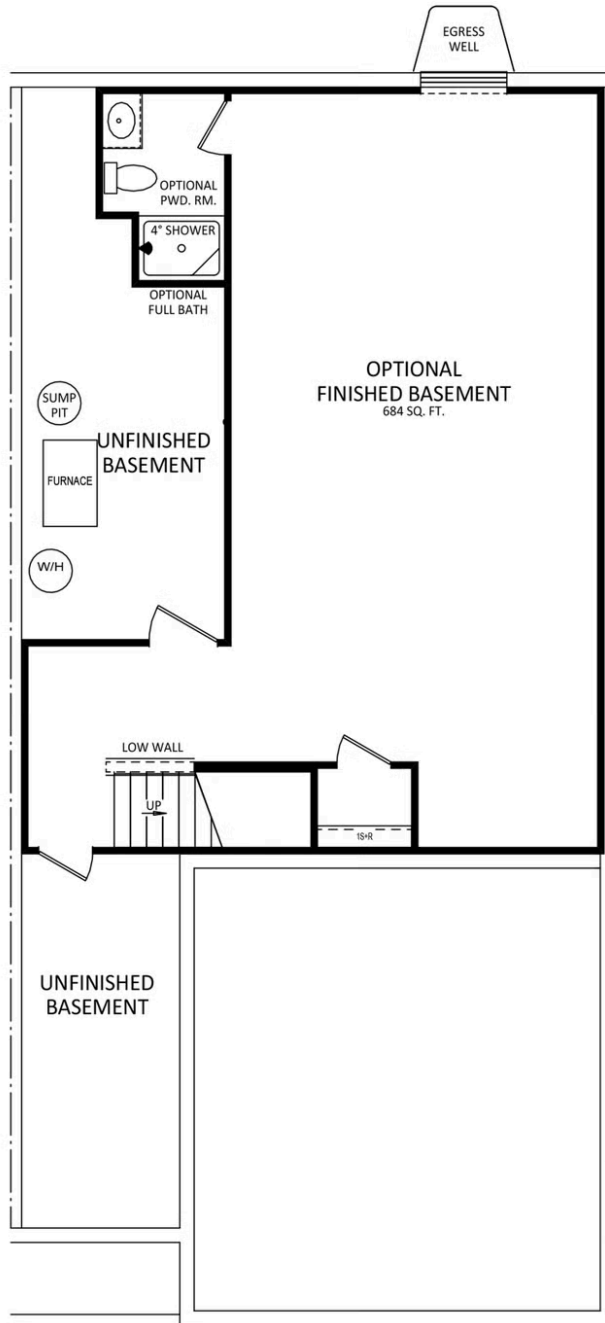
SECOND LEVEL



Have Questions? Ask...
KELLY

(484) 772-2693 / bhmarketing@berkshomes.com





LOWER LEVEL



Have Questions? Ask...
KELLY

(484) 772-2693 / bhmarketing@berkshomes.com

