

# 1042 Ellie Lane West

QUICK MOVE-IN

FLOORPLAN

**Jasmine**

COMMUNITY

**Elizabeth Village**



**3  
Beds**



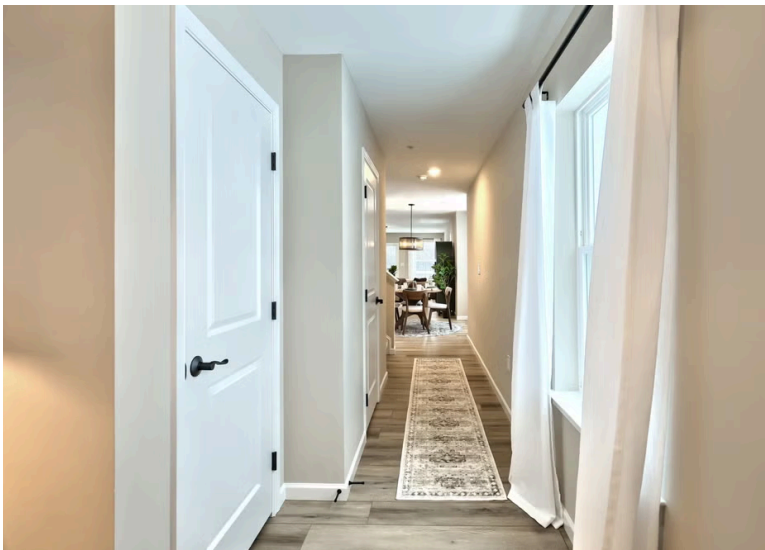
**3.5  
Baths**



**2-Car  
Garage**



**2534  
Sq. Ft.**



This thoughtfully designed Model Home offers a functional layout with upgrades selected for everyday living. The main living areas feature engineered vinyl plank flooring and an open flow from the kitchen to the family room, making it easy to stay connected. The family room includes recessed lighting, a gas fireplace, and an upgraded window package that brings in additional natural light.

The upgraded kitchen is equipped with an island, quartz countertops, tile backsplash, upgraded cabinetry, stainless steel appliances, and recessed lighting. Just off the kitchen, the breakfast area is enhanced with a double bay window, creating added space and light for casual dining....

## Central Dauphin School District

### Sales Office Hours

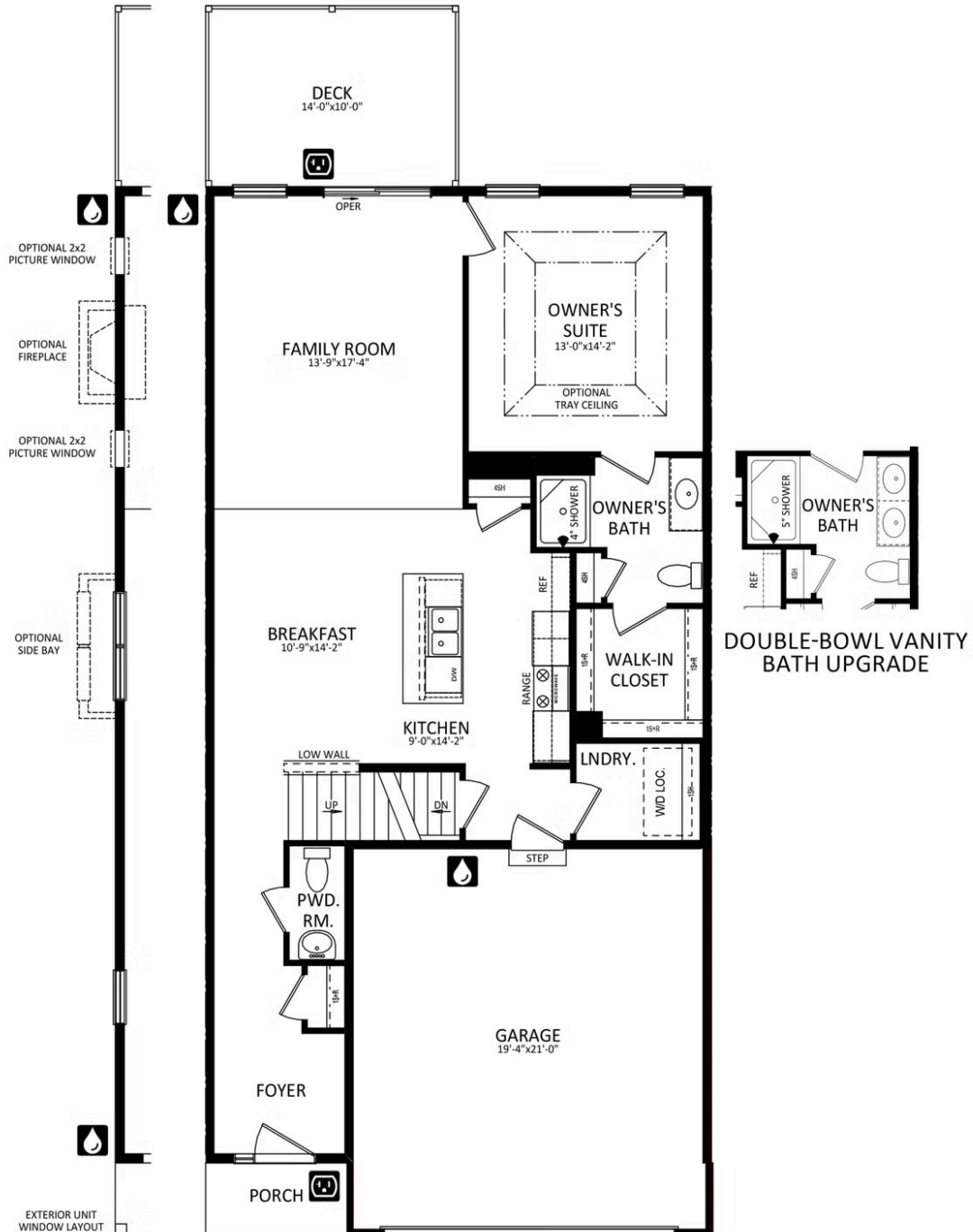
By Appointment: Open Wednesday - Saturday 10:00 am - 5:00 pm | Closed Sundays, Mondays, and Tuesdays



**Have Questions? Ask...**  
**KELLY**

(484) 772-2693 / [bhmarketing@berkshomes.com](mailto:bhmarketing@berkshomes.com)

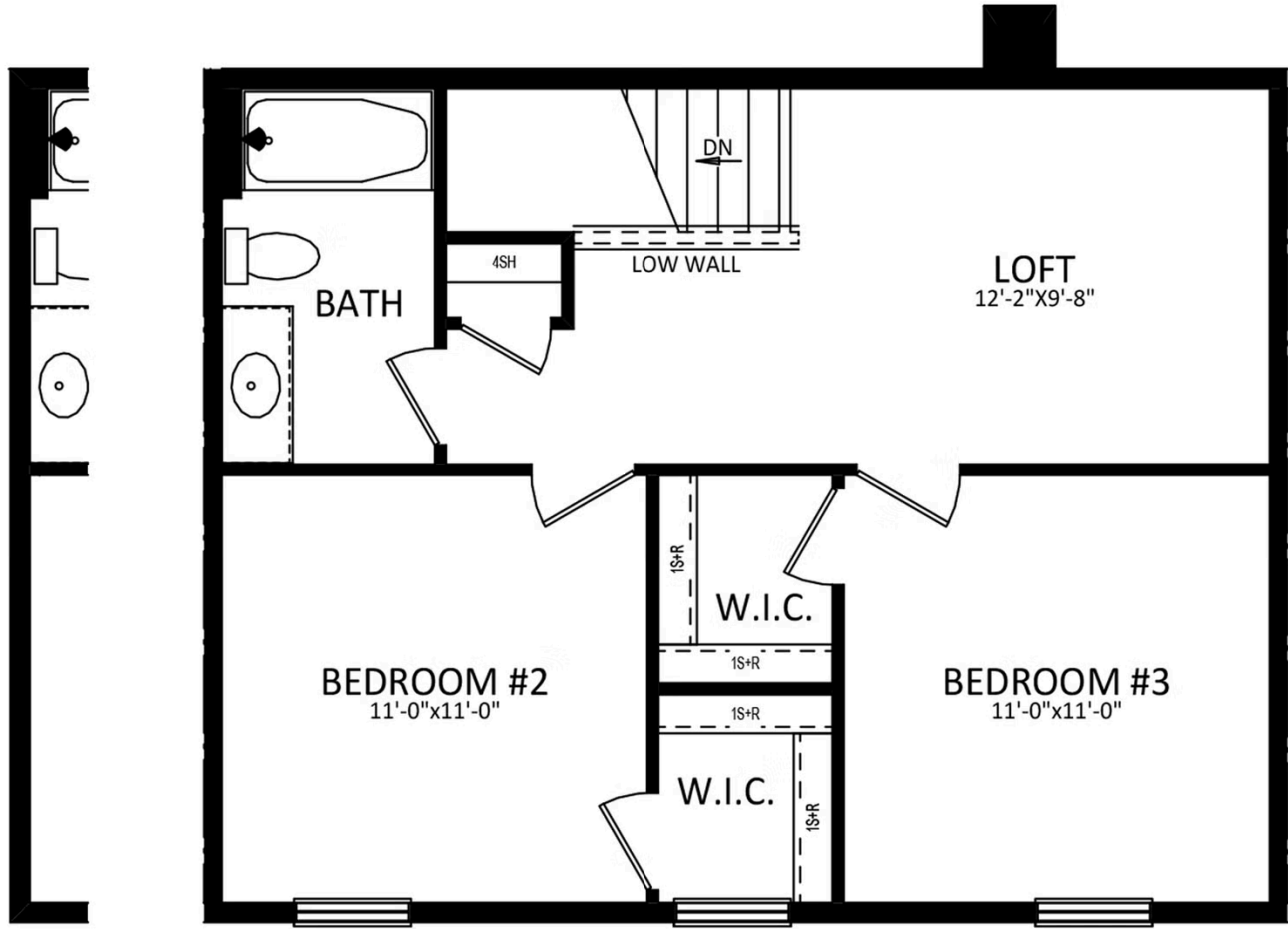




**Have Questions? Ask...**  
**KELLY**

(484) 772-2693 / [bhmarketing@berkshomes.com](mailto:bhmarketing@berkshomes.com)





EXTERIOR UNIT  
WINDOW LAYOUT

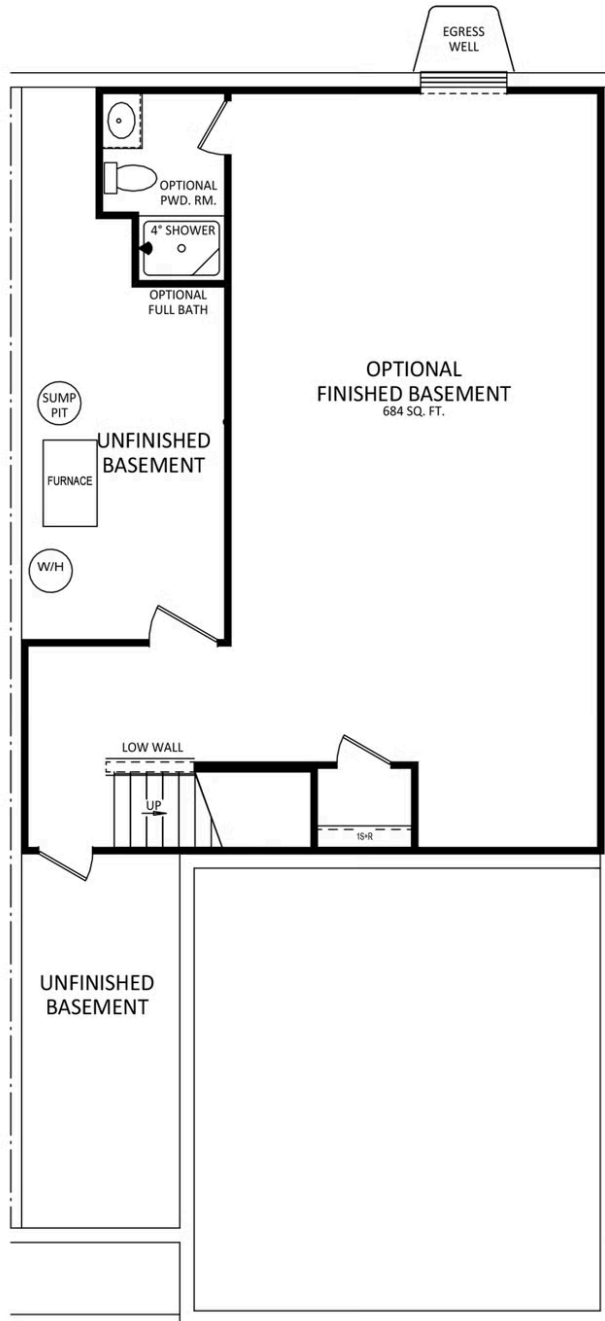
WINDOW CONFIGURATION ON  
FRONT OF HOME VARIES PER ELEVATION



**Have Questions? Ask...**  
**KELLY**

(484) 772-2693 / [bhmarketing@berkshomes.com](mailto:bhmarketing@berkshomes.com)





**Have Questions? Ask...**  
**KELLY**

(484) 772-2693 / [bhmarketing@berkshomes.com](mailto:bhmarketing@berkshomes.com)

