



UNDER CONSTRUCTION

FLOORPLAN

Jasmine

COMMUNITY

Elizabeth Village



**3
Beds**



**2.5
Baths**



**2-Car
Garage**



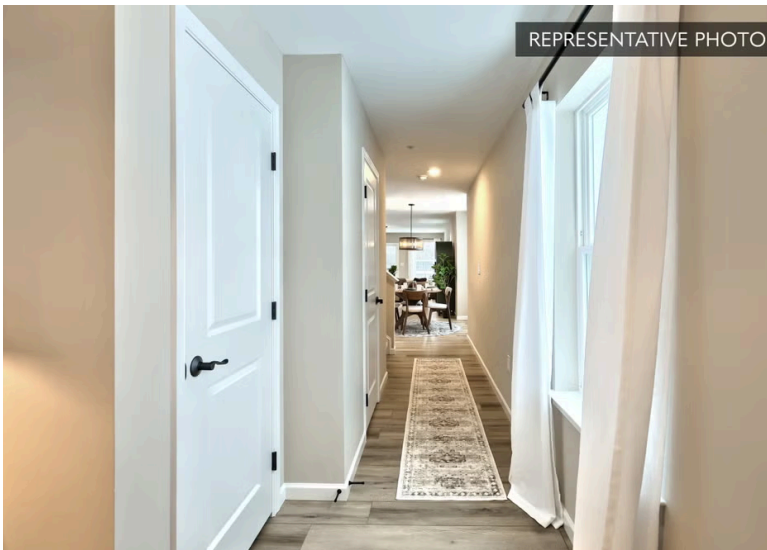
**1803
Sq. Ft.**



This 3-bed, 2.5 bath, 1,803 sq. ft. townhome features thoughtful upgrades throughout.

As you enter the home, you're greeted into a foyer and hallway opening up into the kitchen. The upgraded kitchen is the heart of the home, featuring an island, quartz countertops, tile backsplash, upgraded cabinetry, stainless steel appliances, and recessed lighting. Adjacent to the kitchen is the breakfast area with a double bay window, a dedicated space for meals and hosting. The kitchen flows seamlessly into the family room, enhanced by a gas fireplace and recessed lighting for added warmth.

The first-floor owner's suite offers convenience and...



Central Dauphin School District

Sales Office Hours

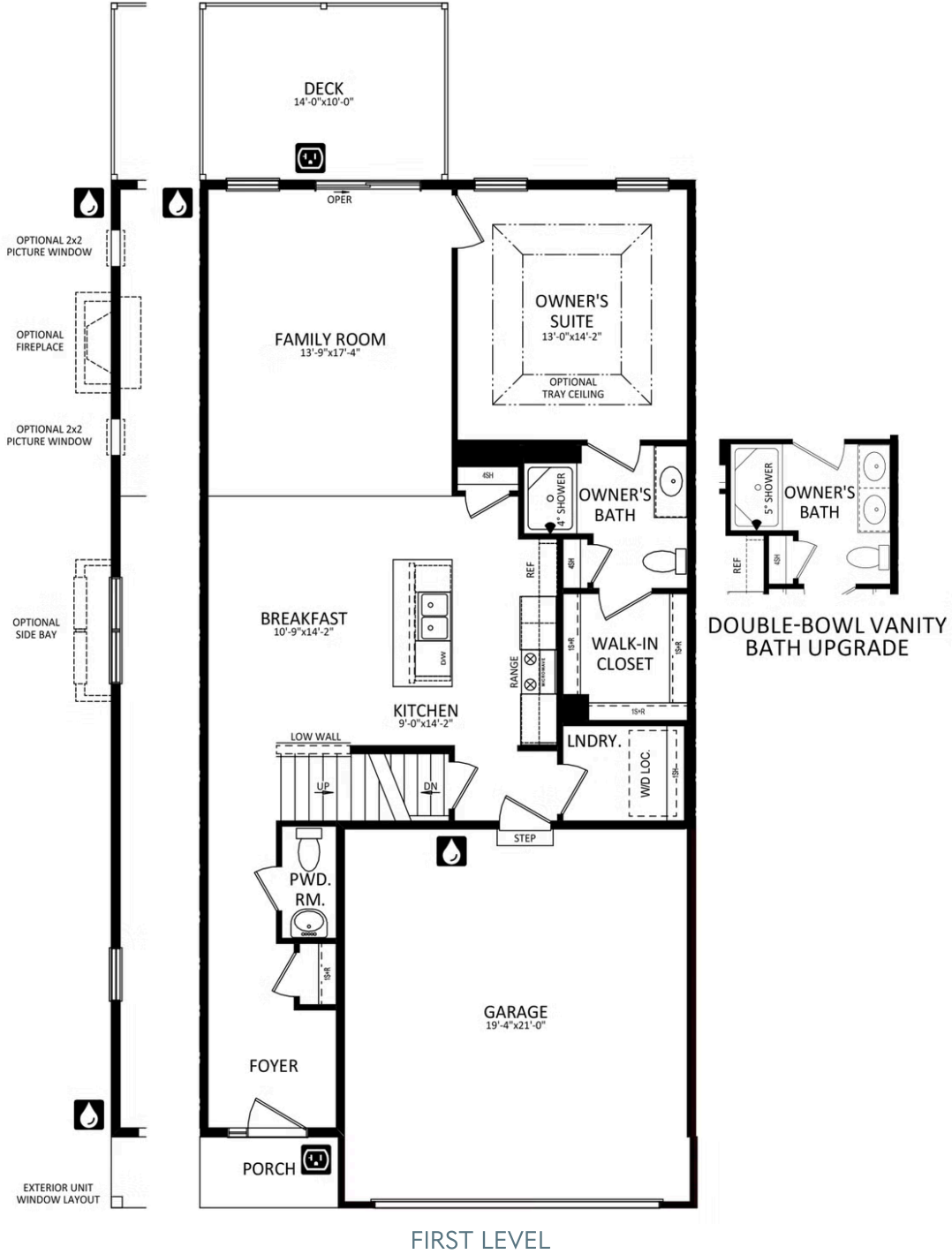
By Appointment: Open Wednesday - Saturday 10:00 am - 5:00 pm | Closed Sundays, Mondays, and Tuesdays



Have Questions? Ask...
KELLY

(484) 772-2693 / bhmarketing@berkshomes.com

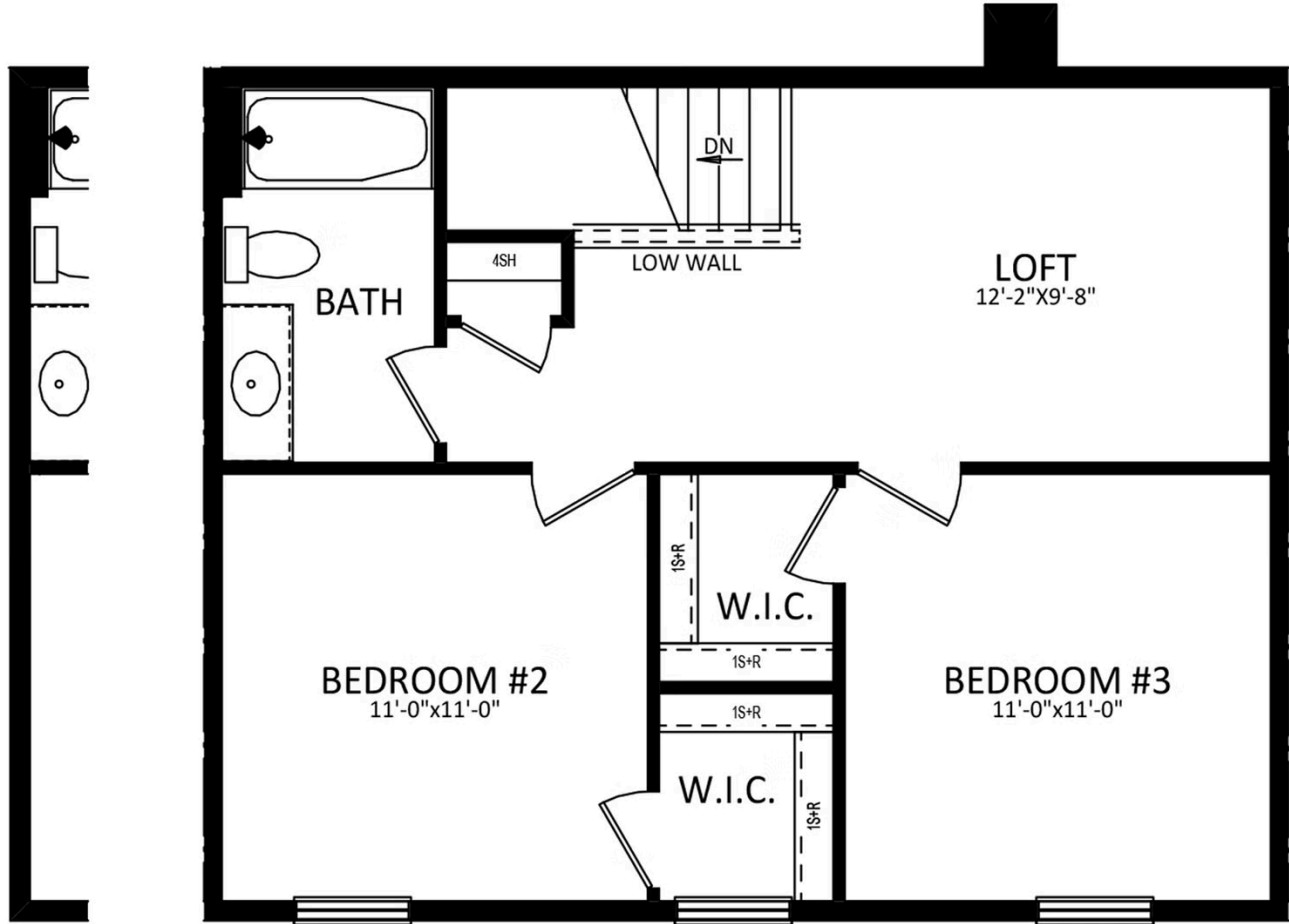




Have Questions? Ask...
KELLY

(484) 772-2693 / bhmarketing@berkshomes.com





EXTERIOR UNIT
WINDOW LAYOUT

WINDOW CONFIGURATION ON
FRONT OF HOME VARIES PER ELEVATION

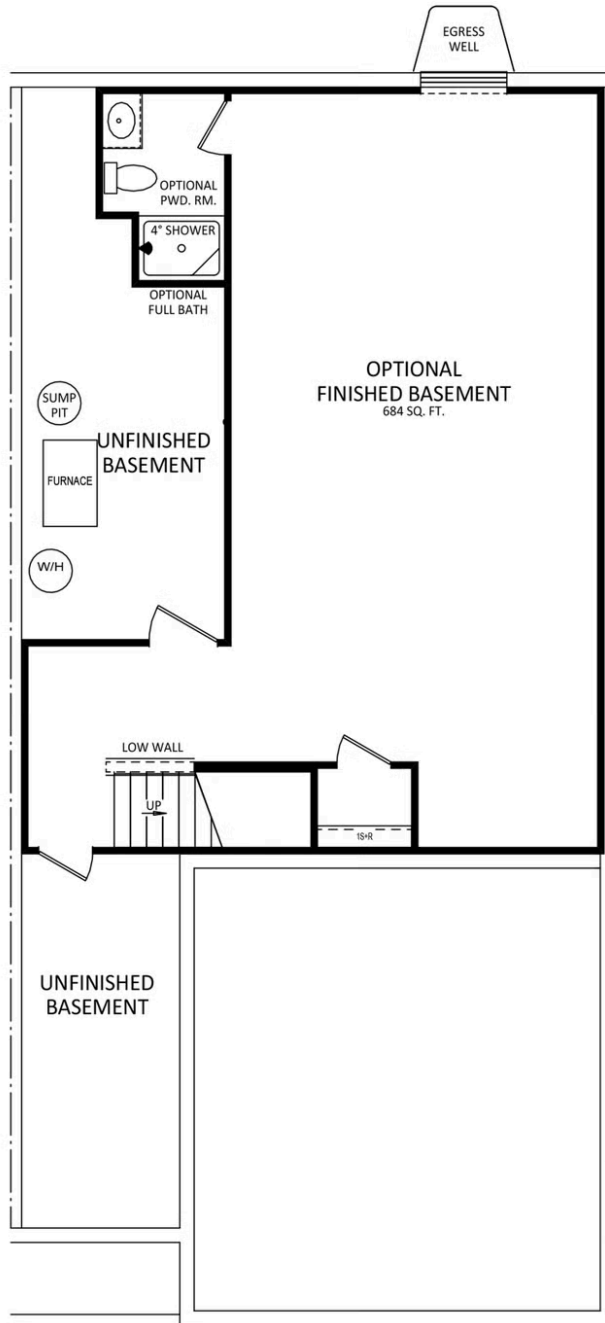
SECOND LEVEL



Have Questions? Ask...
KELLY

(484) 772-2693 / bhmarketing@berkshomes.com





LOWER LEVEL



Have Questions? Ask...
KELLY

(484) 772-2693 / bhmarketing@berkshomes.com

