

**QUICK MOVE-IN**

**FLOORPLAN**

**Magnolia**

**COMMUNITY**

**Elizabeth Village**



**3  
Beds**



**2.5  
Baths**



**2-Car  
Garage**



**1760  
Sq. Ft.**



REPRESENTATIVE PHOTO



Buyers who use our preferred partners will receive up to a \$10,000 credit in the Selection Gallery to apply toward interior finishes. The home's structural features are already in place, allowing you to focus on selecting the finishes that best fit your personal style. All interior selections must be completed by July 11th, 2026.

This thoughtfully designed two-story home offers the space, function, and flow that today's families are looking for — and with your interior selections still ahead, you have the opportunity to make it truly yours.

The main level sets the tone with an open, connected layout built for everyday living. A welcoming foyer greets you at the entry, leading into a spacious kitchen that flows seamlessly into the family room. The kitchen features ample cabinetry and a functional layout, while...

**Central Dauphin School District**

**Sales Office Hours**

By Appointment: Open Wednesday - Saturday 10:00 am - 5:00 pm | Closed Sundays, Mondays, and Tuesdays



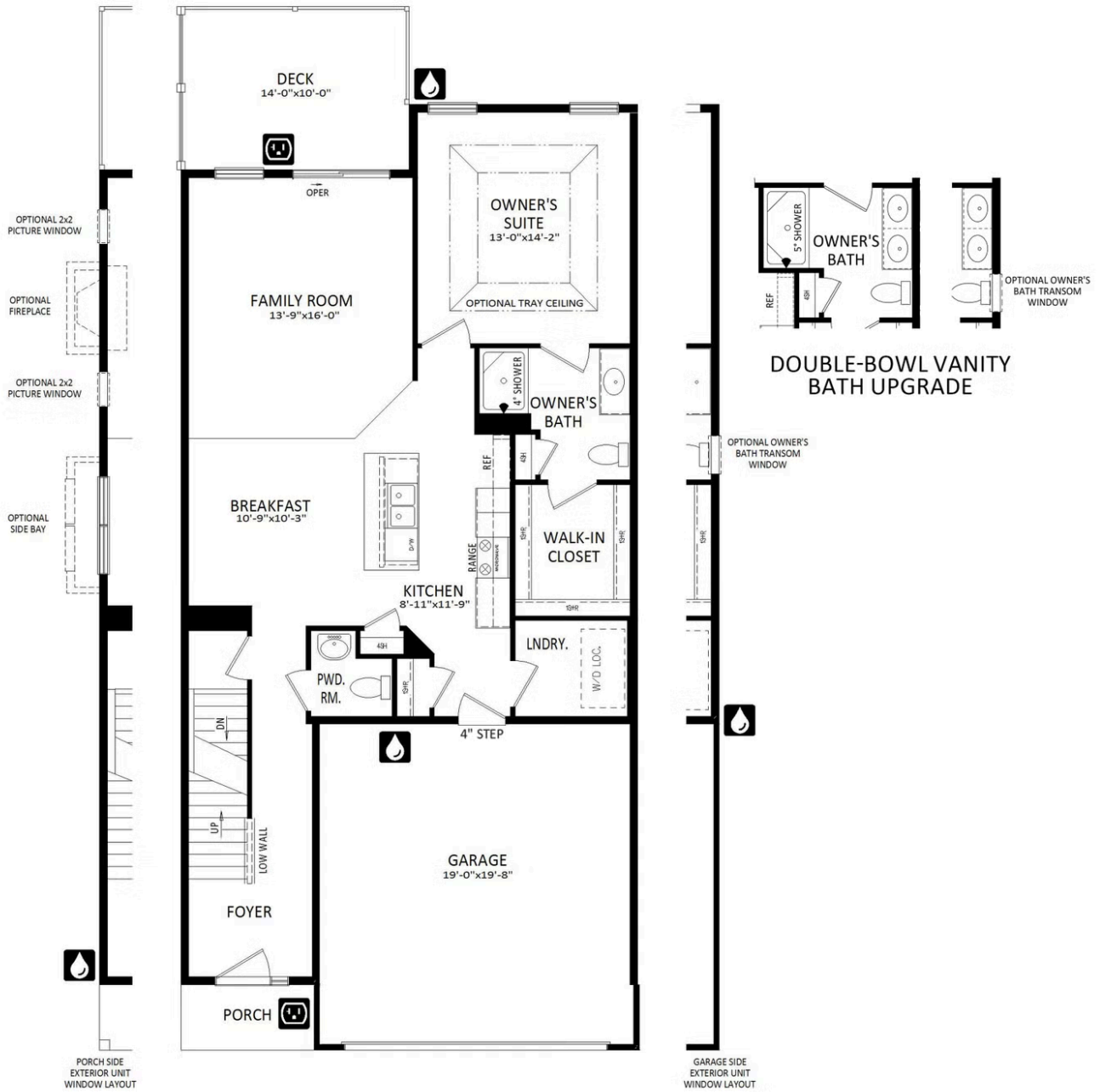
REPRESENTATIVE PHOTO



**Have Questions? Ask...**  
**KELLY**

(484) 772-2693 / [bhmarketing@berkshomes.com](mailto:bhmarketing@berkshomes.com)





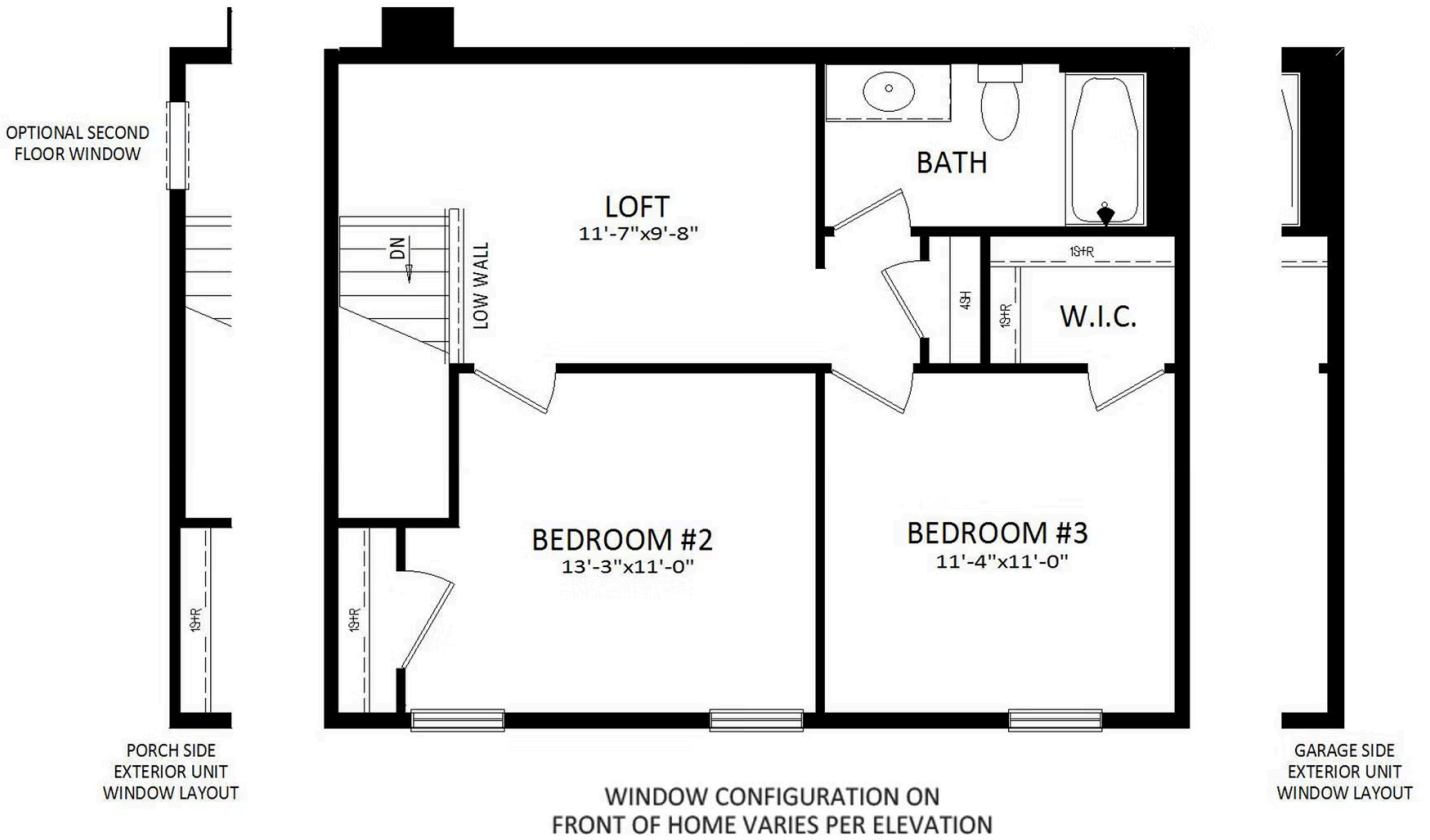
FIRST LEVEL



**Have Questions? Ask...**  
KELLY

(484) 772-2693 / bhmarketing@berkshomes.com





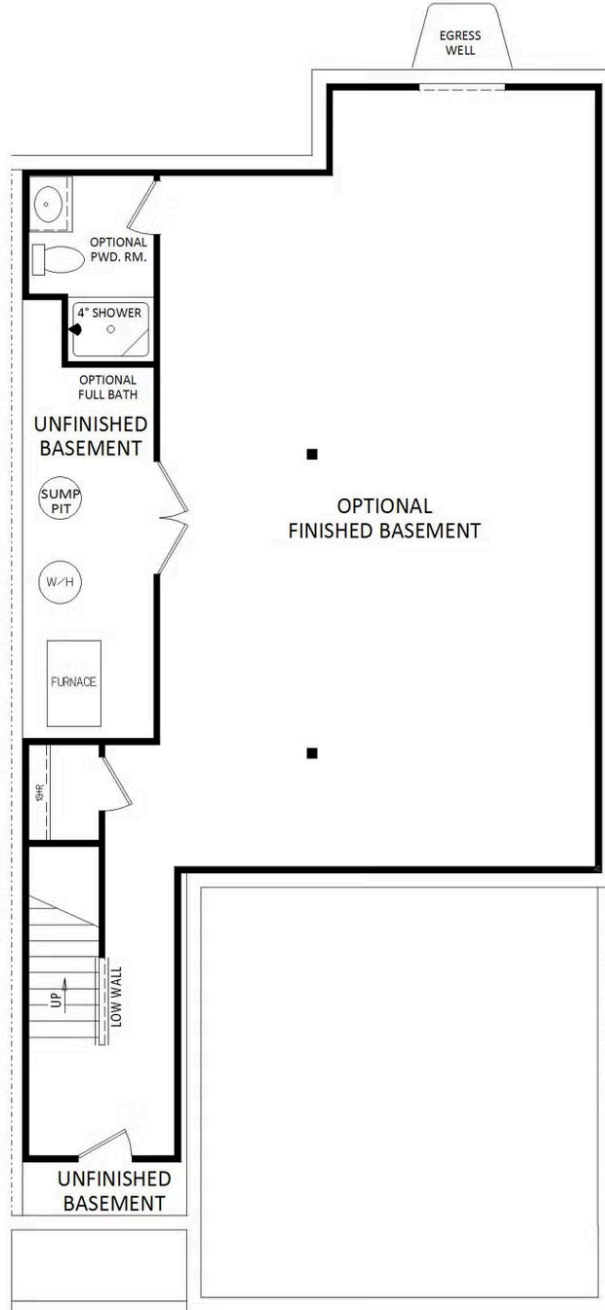
SECOND LEVEL



**Have Questions? Ask...**  
**KELLY**

(484) 772-2693 / [bhmarketing@berkshomes.com](mailto:bhmarketing@berkshomes.com)





LOWER LEVEL



**Have Questions? Ask...**  
**KELLY**

(484) 772-2693 / [bhmarketing@berkshomes.com](mailto:bhmarketing@berkshomes.com)

