

UNDER CONSTRUCTION

FLOORPLAN
Magnolia
COMMUNITY
Elizabeth Village



**3
Beds**



**3.5
Baths**



**2-Car
Garage**



**2653
Sq. Ft.**



REPRESENTATIVE PHOTO



REPRESENTATIVE PHOTO



REPRESENTATIVE PHOTO

This 3-bed, 3.5 bath, 2,653 sq. ft. townhome features thoughtful upgrades throughout.

As you enter the home, you're greeted into a foyer and hallway opening up into the kitchen. The upgraded kitchen is the heart of the home, featuring an island, quartz countertops, tile backsplash, upgraded cabinetry, stainless steel appliances, under-cabinet lighting, and recessed lighting. Adjacent to the kitchen is the breakfast area, a dedicated space for meals and hosting. The kitchen flows seamlessly into the family room, enhanced by engineered vinyl plank flooring and recessed lighting for added warmth.

The first-floor owner's suite offers convenience and...

Central Dauphin School District

Sales Office Hours

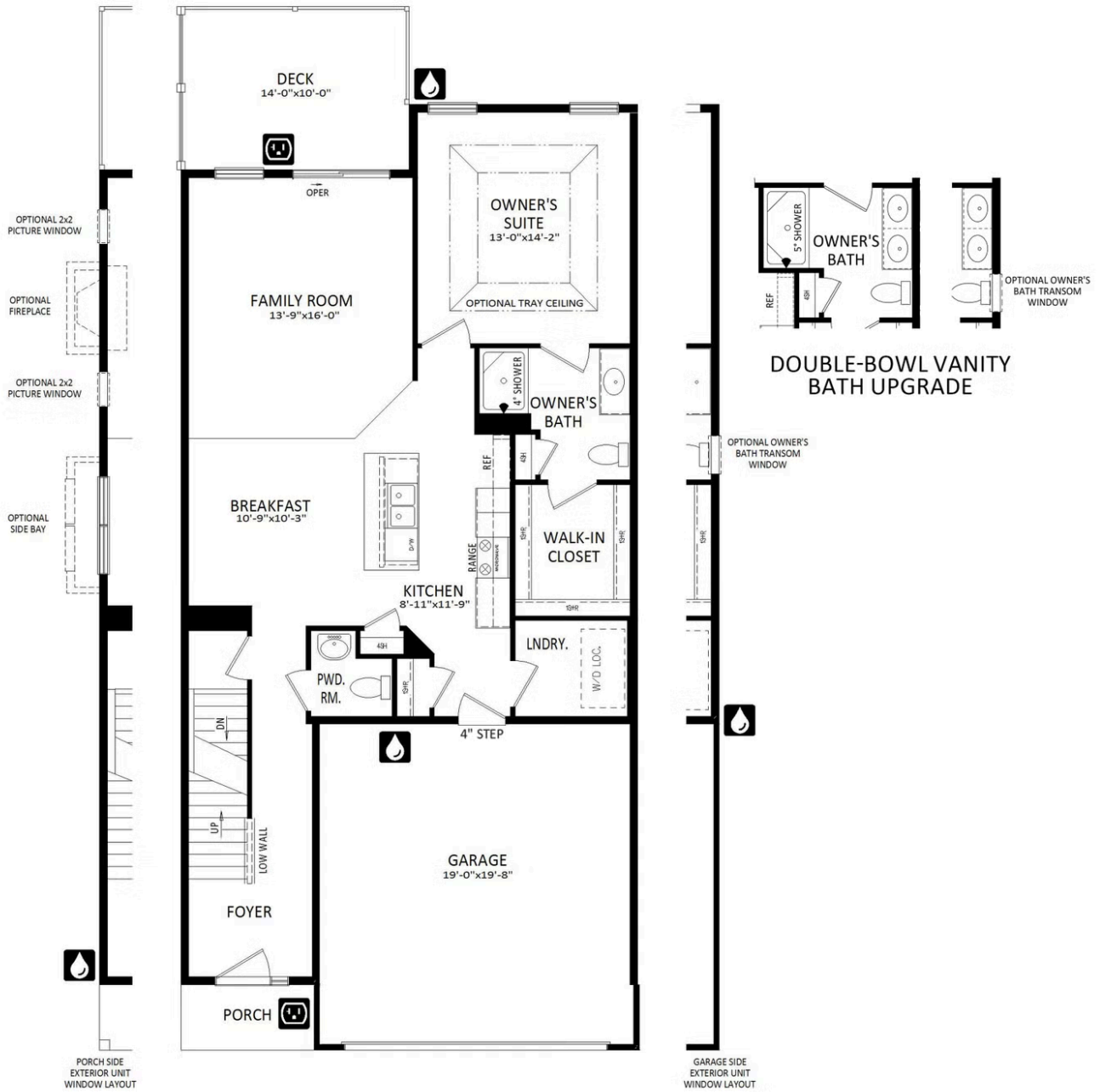
By Appointment: Open Wednesday - Saturday 10:00 am - 5:00 pm | Closed Sundays, Mondays, and Tuesdays



Have Questions? Ask...
KELLY

(484) 772-2693 / bhmarketing@berkshomes.com





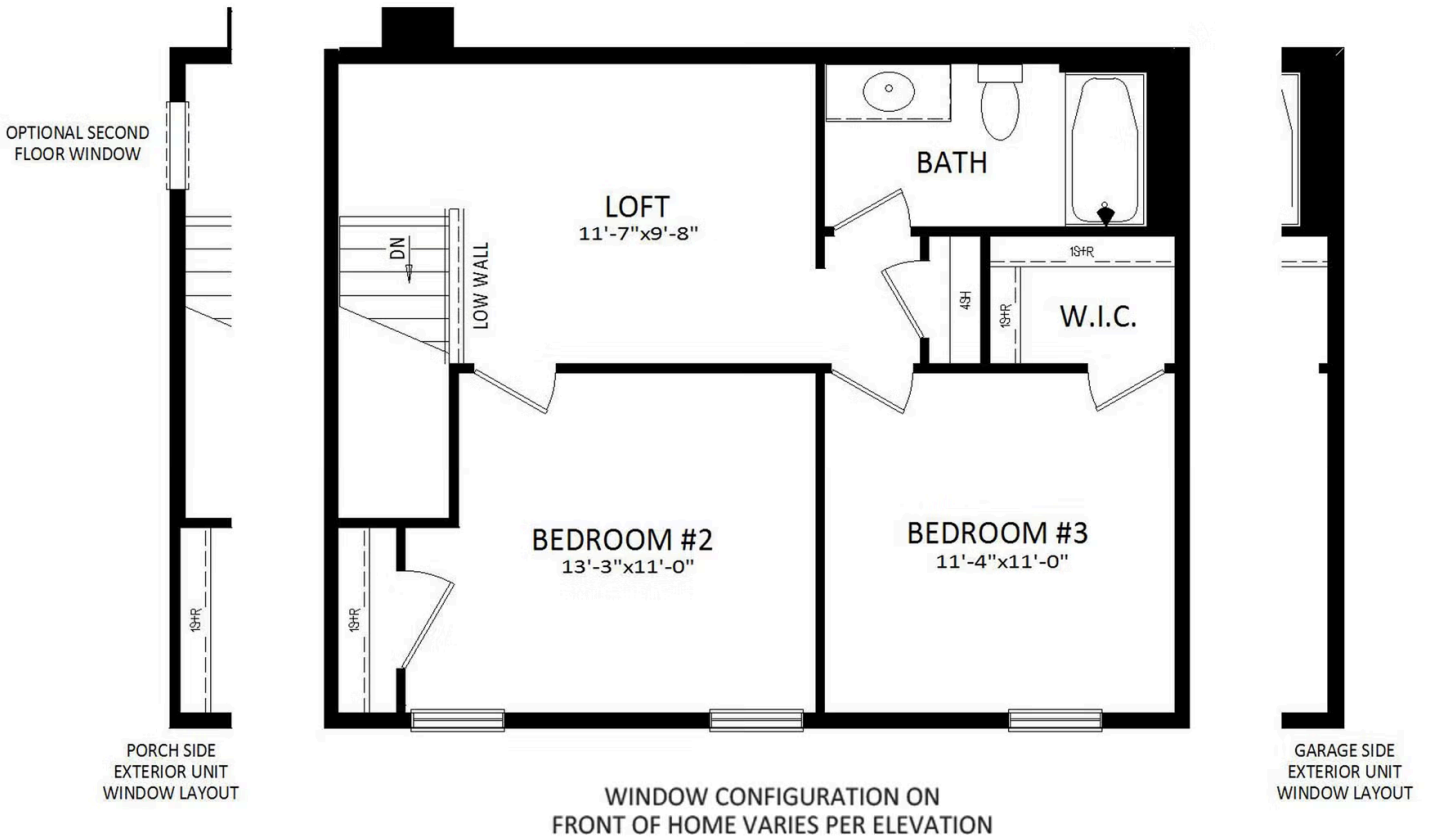
FIRST LEVEL



Have Questions? Ask...
KELLY

(484) 772-2693 / bhmarketing@berkshomes.com





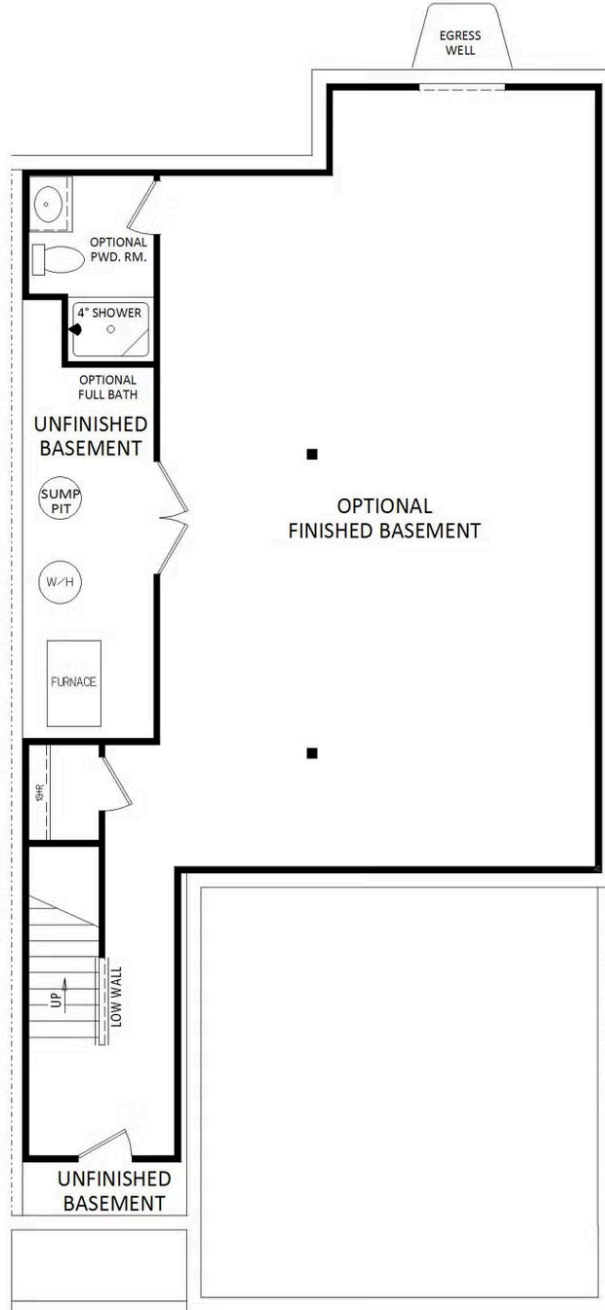
SECOND LEVEL



Have Questions? Ask...
KELLY

(484) 772-2693 / bhmarketing@berkshomes.com





LOWER LEVEL



Have Questions? Ask...
KELLY

(484) 772-2693 / bhmarketing@berkshomes.com

