

**QUICK MOVE-IN**

FLOORPLAN

**Magnolia**

COMMUNITY

**Elizabeth Village**



**3  
Beds**



**3.5  
Baths**



**2-Car  
Garage**



**2653  
Sq. Ft.**

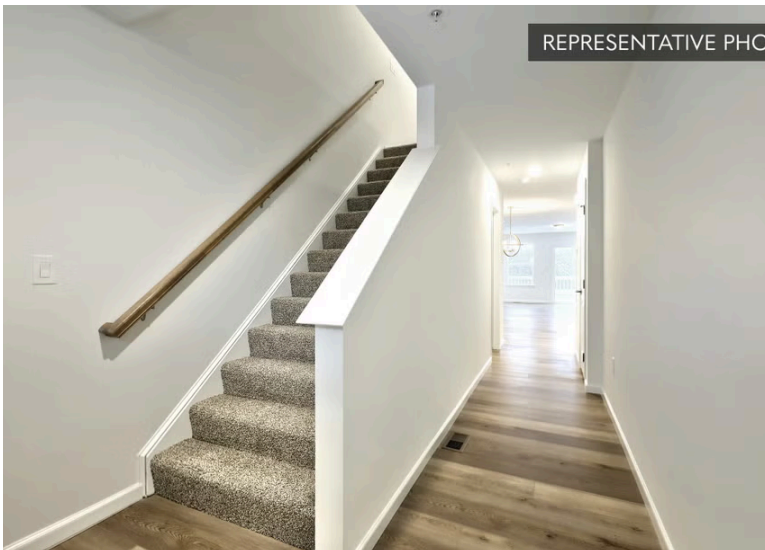


REPRESENTATIVE PHOTO



This home offers a functional layout with added living space across all levels. The main floor features an open kitchen, breakfast area, and family room, creating a connected space for everyday living. The upgraded kitchen includes an island, quartz countertops, tile backsplash, upgraded cabinetry, stainless steel appliances, and recessed lighting. Engineered vinyl plank flooring runs throughout the first floor and continues into the owner's bath. The owner's suite is conveniently located on the main level and includes a walk-in closet and a private bath with a double bowl vanity and tile shower. A powder room, laundry area, and direct access to the garage complete the first floor. Upstairs, a loft with recessed lighting provides additional living space alongside two bedrooms and a full bath. The finished...

REPRESENTATIVE PHOTO



**Central Dauphin School District**

**Sales Office Hours**

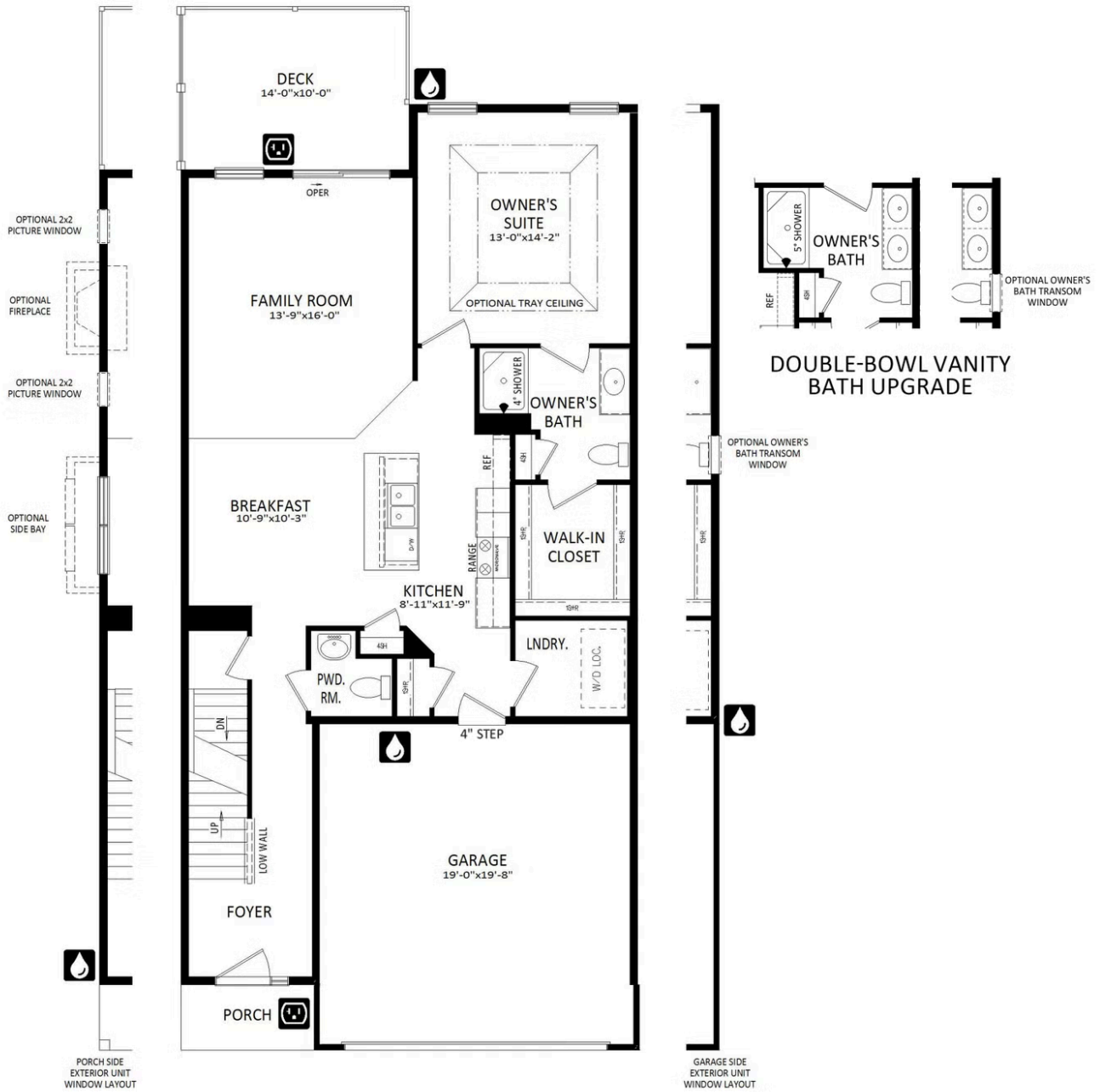
By Appointment: Open Wednesday - Saturday 10:00 am - 5:00 pm | Closed Sundays, Mondays, and Tuesdays



**Have Questions? Ask...**  
**KELLY**

(484) 772-2693 / [bhmarketing@berkshomes.com](mailto:bhmarketing@berkshomes.com)





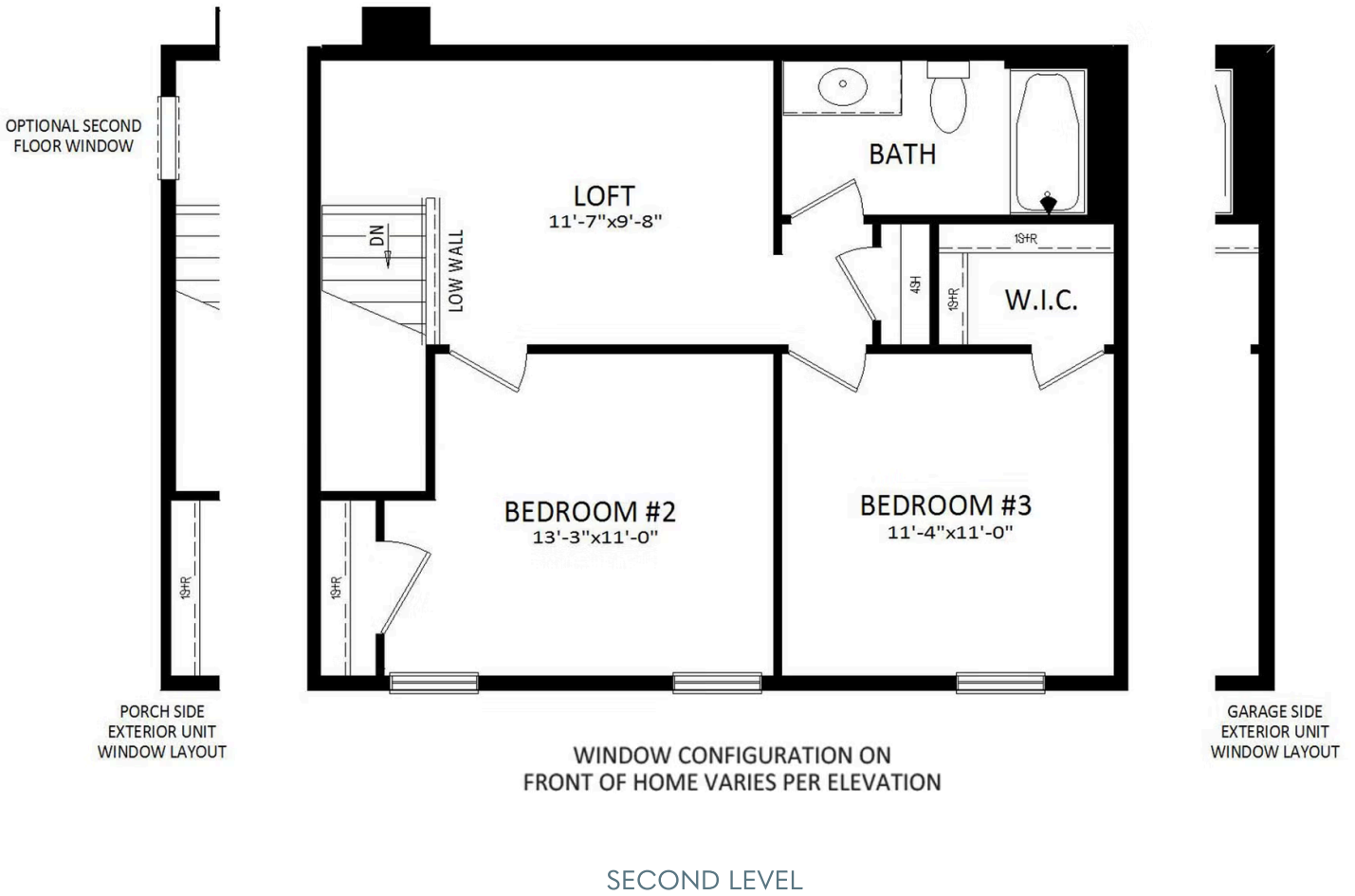
FIRST LEVEL

**Have Questions? Ask...**  
KELLY

(484) 772-2693 / bhmarketing@berkshomes.com



# 1003 Ashleigh Lane LOT 1602

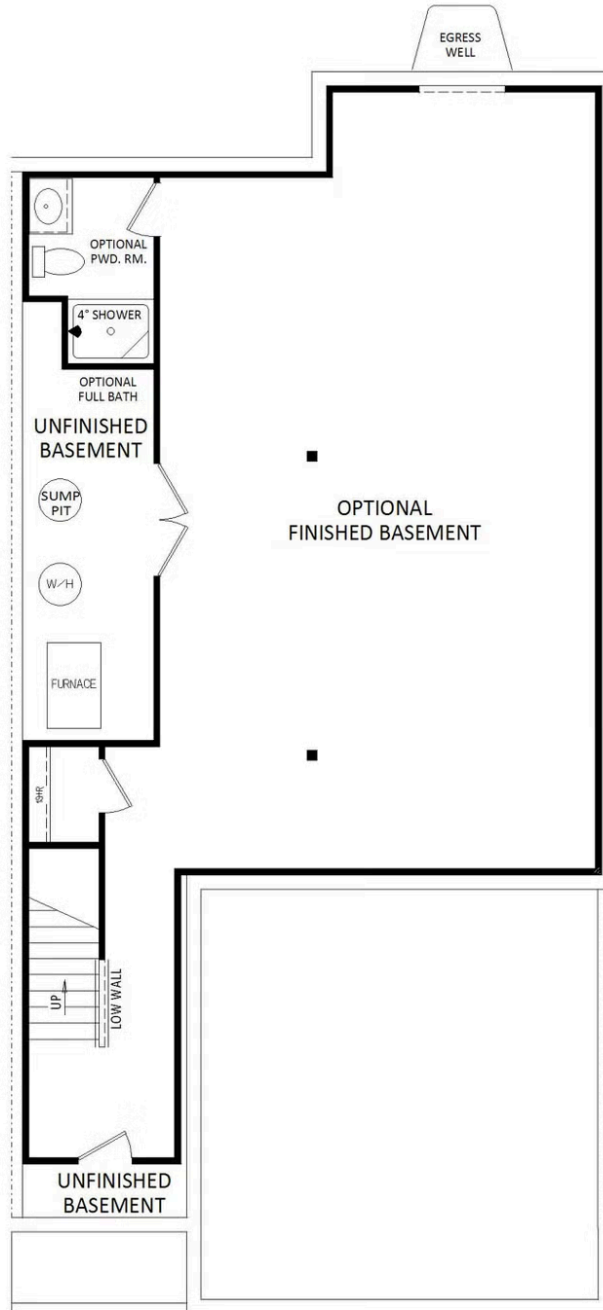


**Have Questions? Ask...**  
**KELLY**

(484) 772-2693 / [bhmarketing@berkshomes.com](mailto:bhmarketing@berkshomes.com)



# 1003 Ashleigh Lane LOT 1602



LOWER LEVEL



**Have Questions? Ask...**  
**KELLY**

(484) 772-2693 / [bhmarketing@berkshomes.com](mailto:bhmarketing@berkshomes.com)

