



QUICK MOVE-IN

FLOORPLAN

Magnolia

COMMUNITY

Elizabeth Village



**3
Beds**



**2.5
Baths**



**2-Car
Garage**



**1760
Sq. Ft.**



This home features a well-designed layout with flexible living space on every level. The main floor brings together the kitchen, breakfast area, and family room in an open layout suited for everyday living. The kitchen is upgraded with an island, quartz countertops, tile backsplash, upgraded cabinetry, stainless steel appliances, and recessed lighting. The family room also includes recessed lighting, and engineered vinyl plank flooring runs throughout the first floor and into the owner's bath. The main-level owner's suite includes a walk-in closet and a private bath with a double bowl vanity. A powder room, laundry area, and access to the garage complete the first floor. Upstairs, a loft with recessed lighting adds additional living space, along with two bedrooms and a full bath. The basement includes ...



Central Dauphin School District

Sales Office Hours

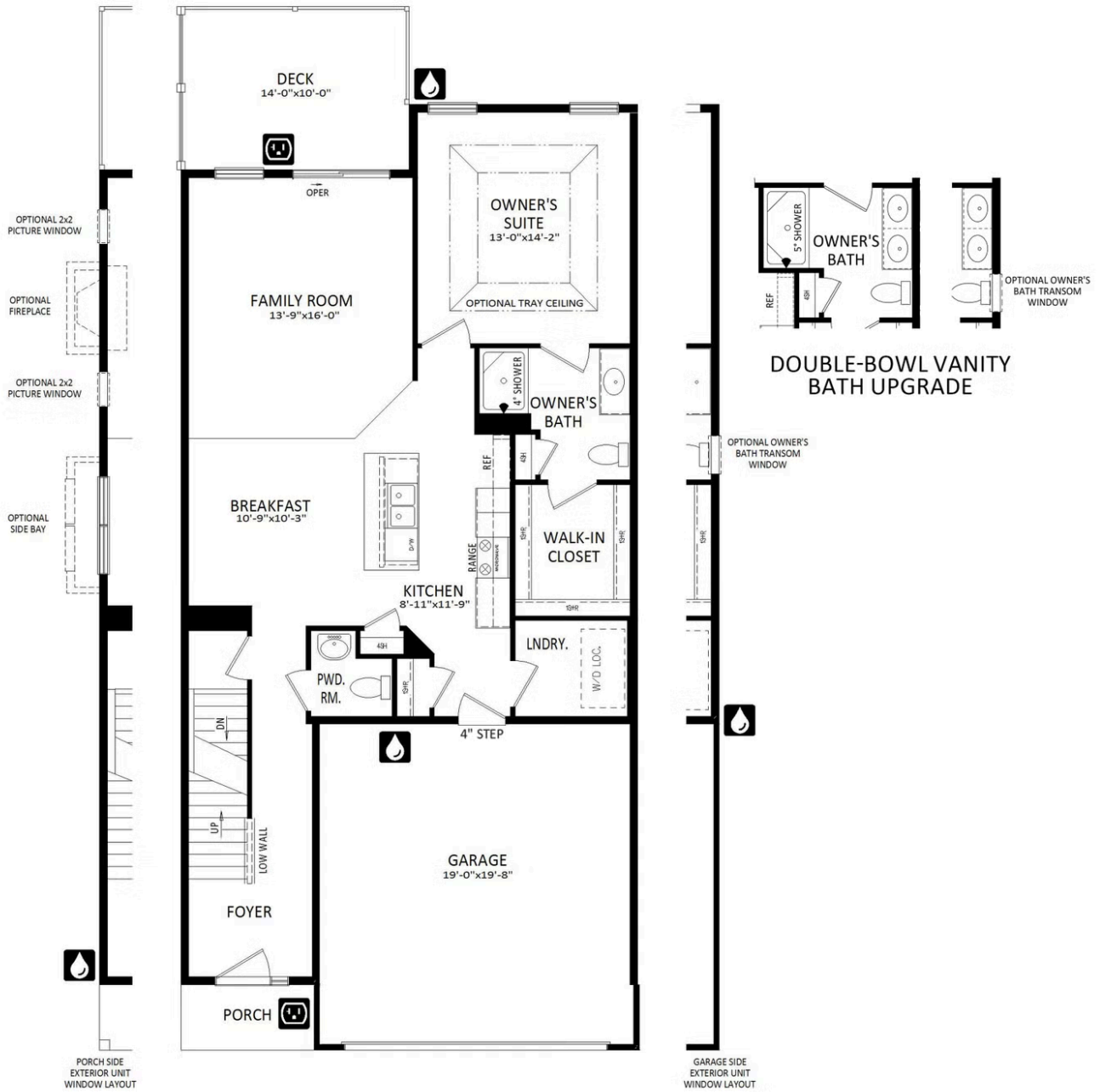
By Appointment: Open Wednesday - Saturday 10:00 am - 5:00 pm | Closed Sundays, Mondays, and Tuesdays



Have Questions? Ask...
KELLY

(484) 772-2693 / bhmarketing@berkshomes.com





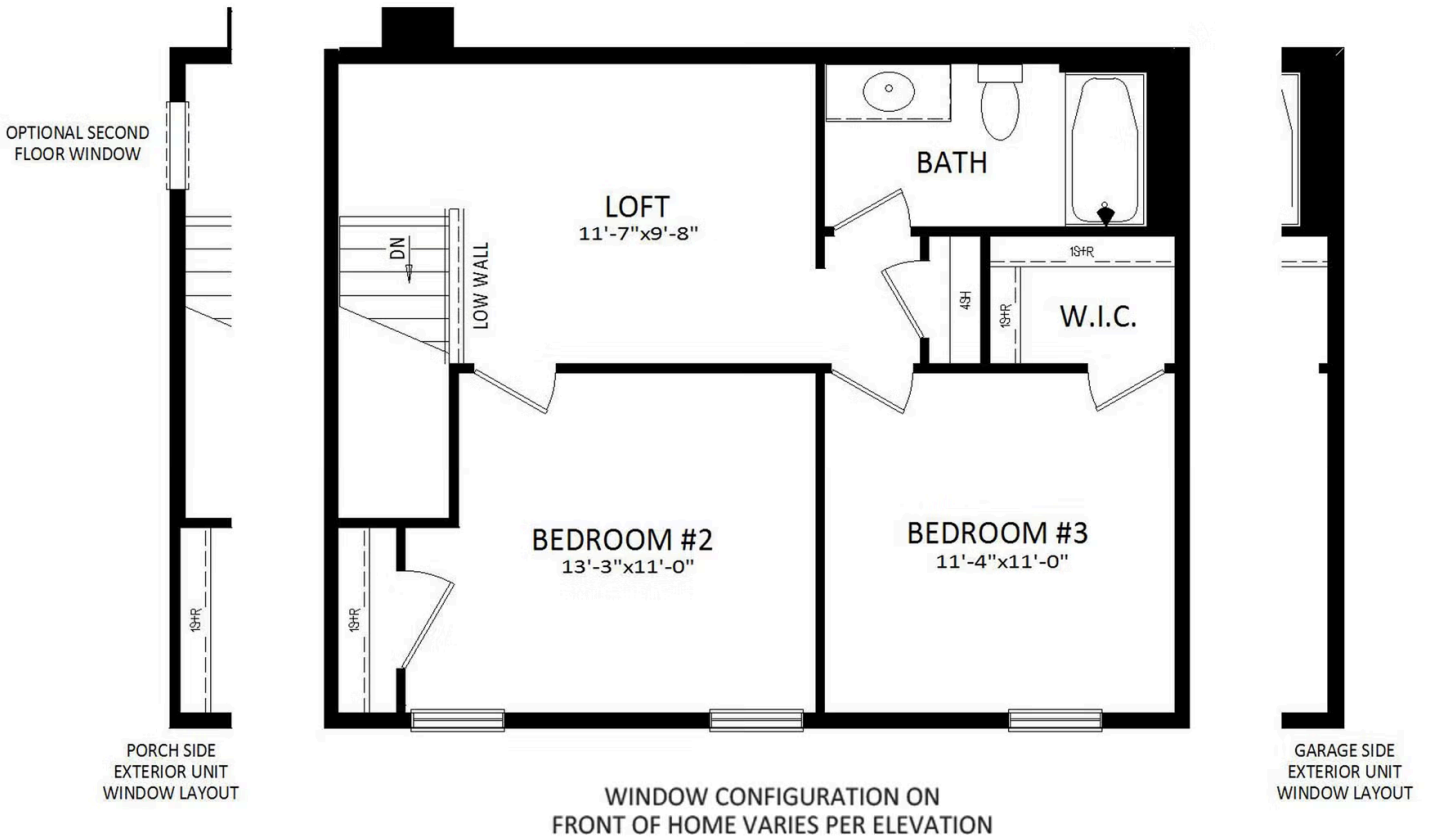
FIRST LEVEL



Have Questions? Ask...
KELLY

(484) 772-2693 / bhmarketing@berkshomes.com





SECOND LEVEL

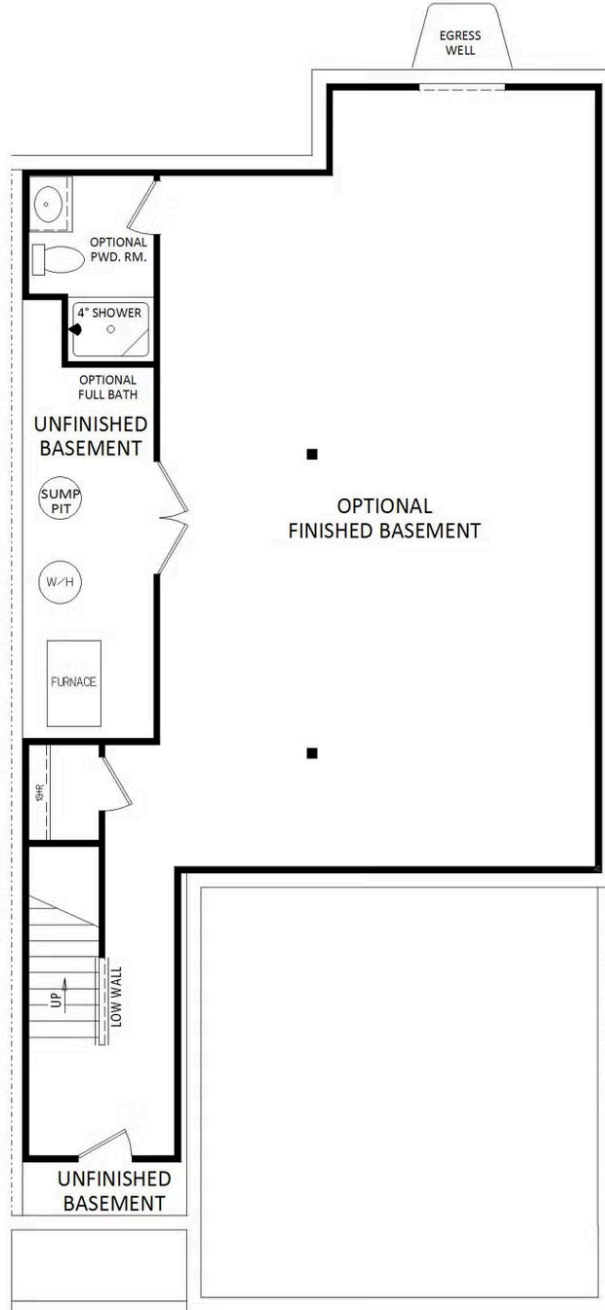


Have Questions? Ask...
KELLY

(484) 772-2693 / bhmarketing@berkshomes.com



1005 Ashleigh Lane LOT 1603



LOWER LEVEL



Have Questions? Ask...
KELLY

(484) 772-2693 / bhmarketing@berkshomes.com

