

QUICK MOVE-IN

FLOORPLAN

Magnolia

COMMUNITY

Elizabeth Village



**3
Beds**



**3.5
Baths**



**2-Car
Garage**



**2653
Sq. Ft.**

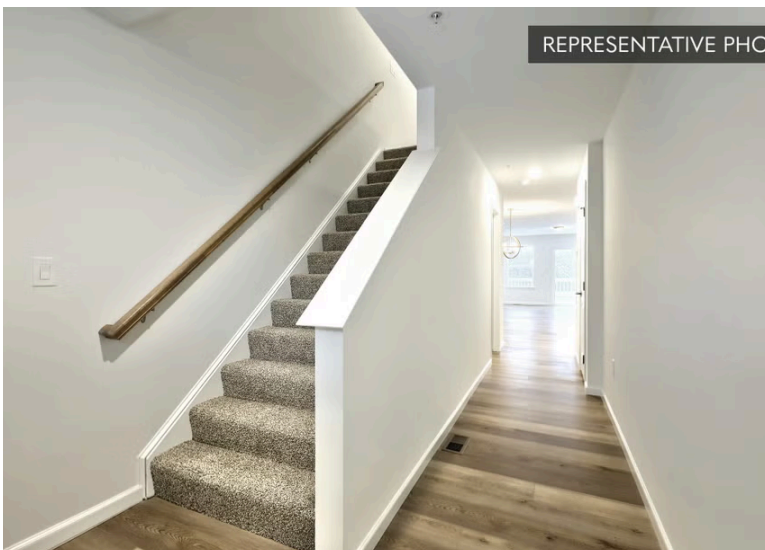


REPRESENTATIVE PHOTO



This home offers a functional layout with added living space across all levels. The main floor features an open kitchen, breakfast area, and family room, creating a connected space for everyday living. The upgraded kitchen includes an island, quartz countertops, tile backsplash, upgraded cabinetry, stainless steel appliances, and recessed lighting. Engineered vinyl plank flooring runs throughout the first floor and continues into the owner's bath. The owner's suite is conveniently located on the main level and includes a walk-in closet and a private bath with a double bowl vanity and tile shower. A powder room, laundry area, and direct access to the garage complete the first floor. Upstairs, a loft with recessed lighting provides additional living space alongside two bedrooms and a full bath. The finished...

REPRESENTATIVE PHOTO



Central Dauphin School District

Sales Office Hours

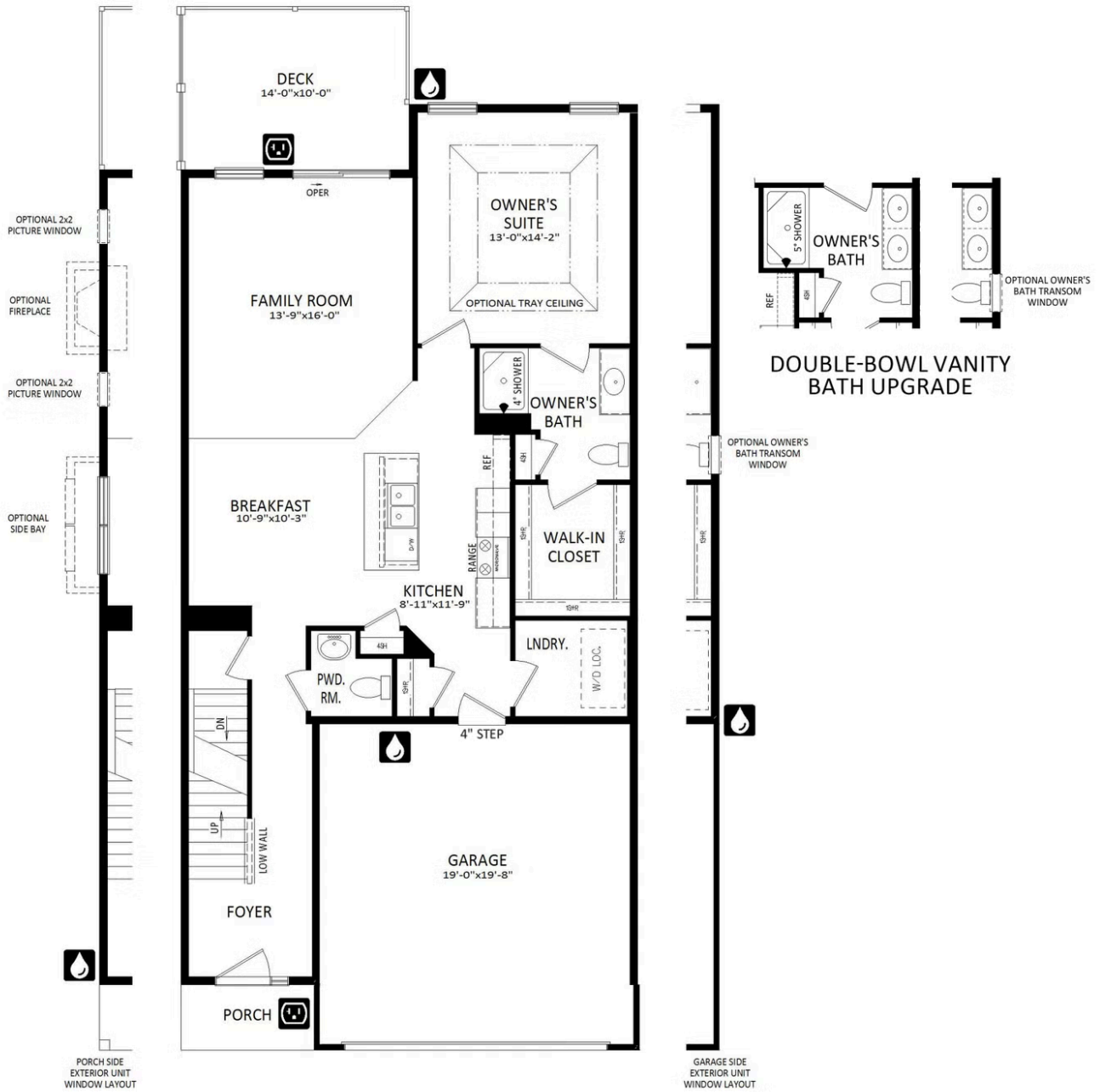
By Appointment: Open Wednesday - Saturday 10:00 am - 5:00 pm | Closed Sundays, Mondays, and Tuesdays



Have Questions? Ask...
KELLY

(484) 772-2693 / bhmarketing@berkshomes.com





FIRST LEVEL

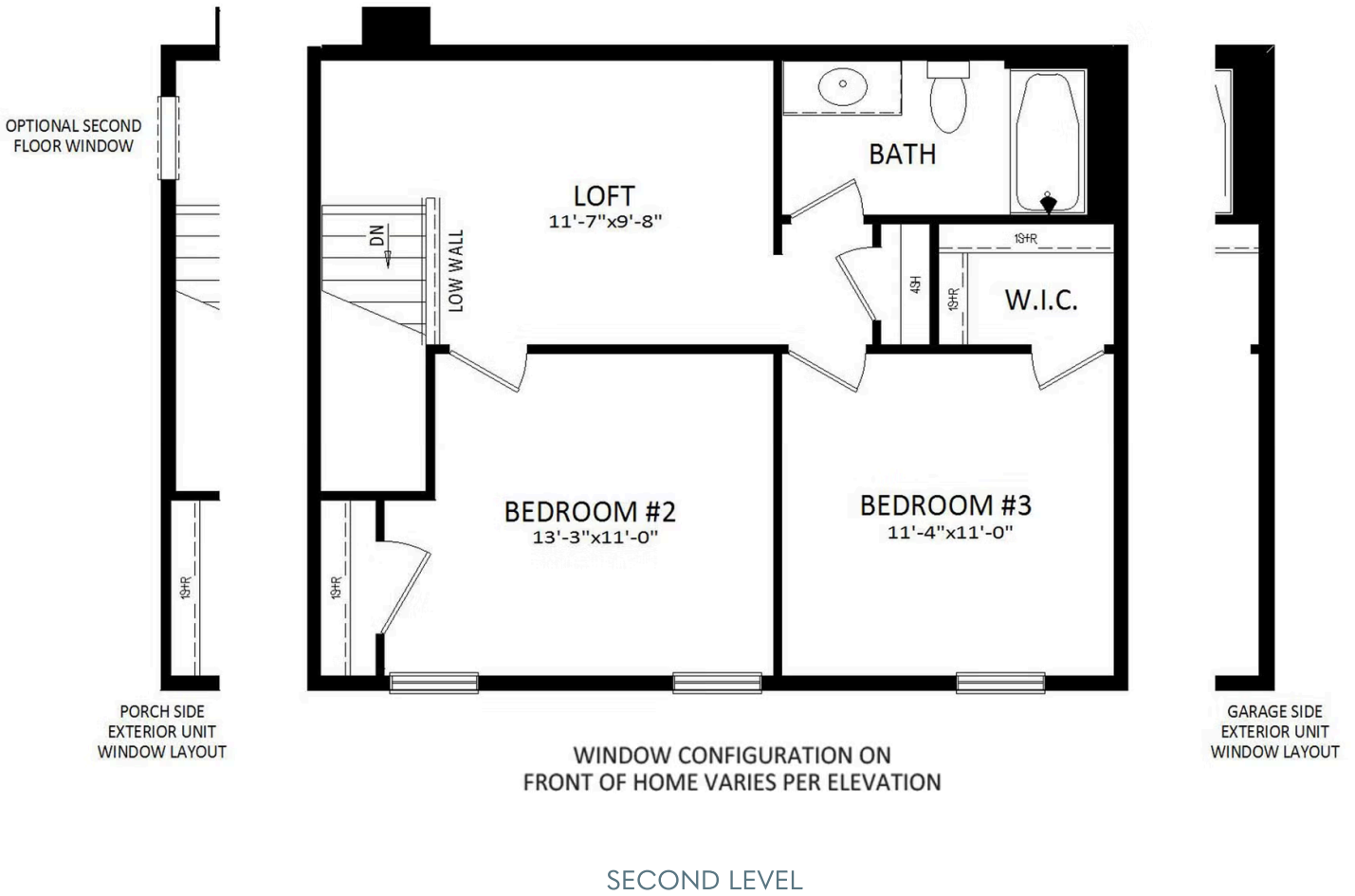


Have Questions? Ask...
KELLY

(484) 772-2693 / bhmarketing@berkshomes.com



1007 Ashleigh Lane LOT 1604

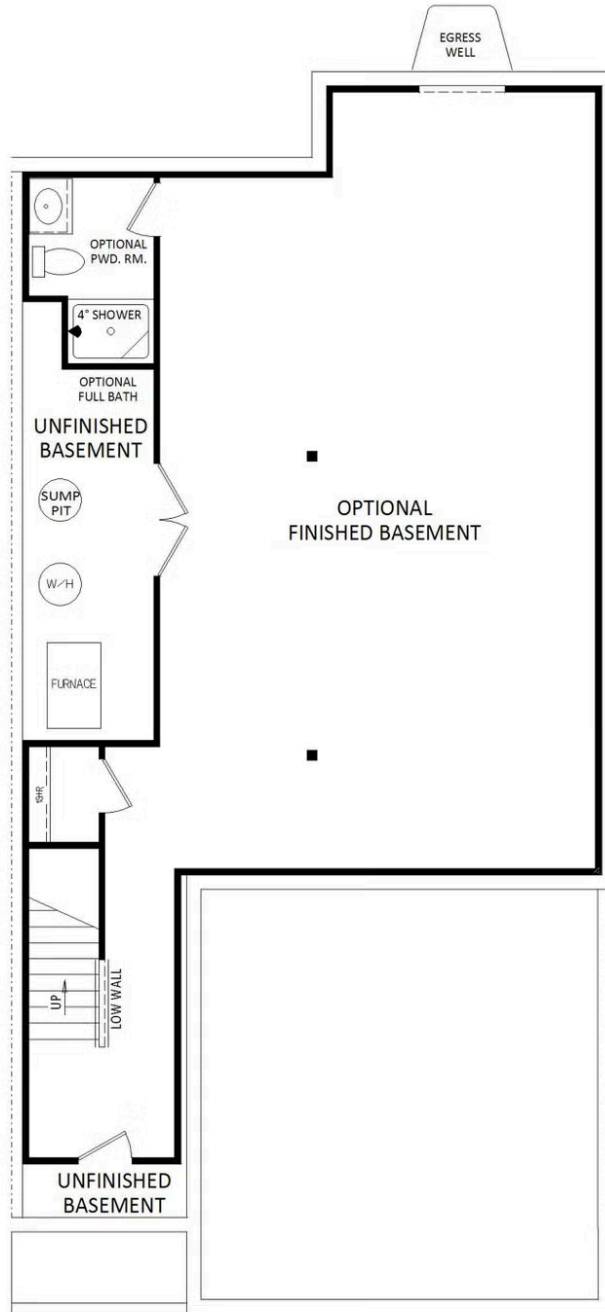


Have Questions? Ask...
KELLY

(484) 772-2693 / bhmarketing@berkshomes.com



1007 Ashleigh Lane LOT 1604



LOWER LEVEL



Have Questions? Ask...
KELLY

(484) 772-2693 / bhmarketing@berkshomes.com

