



**QUICK MOVE-IN**

FLOORPLAN

**Magnolia**

COMMUNITY

**Elizabeth Village**



**3  
Beds**



**2.5  
Baths**



**2-Car  
Garage**



**1760  
Sq. Ft.**

Buyers who use our preferred partners will receive up to a \$10,000 credit in the Selection Gallery to apply toward interior finishes. The home's structural features are already in place, allowing you to focus on selecting the finishes that best fit your personal style. All interior selections must be completed by June 18th, 2026.

This well-designed two-story home delivers the space and functionality modern families need — and with your interior selections still to come, you have the chance to personalize every detail.

The main level welcomes you with a foyer that opens into a comfortable, connected living space. The kitchen flows naturally into the family room, creating an easy...

**Central Dauphin School District**

**Sales Office Hours**

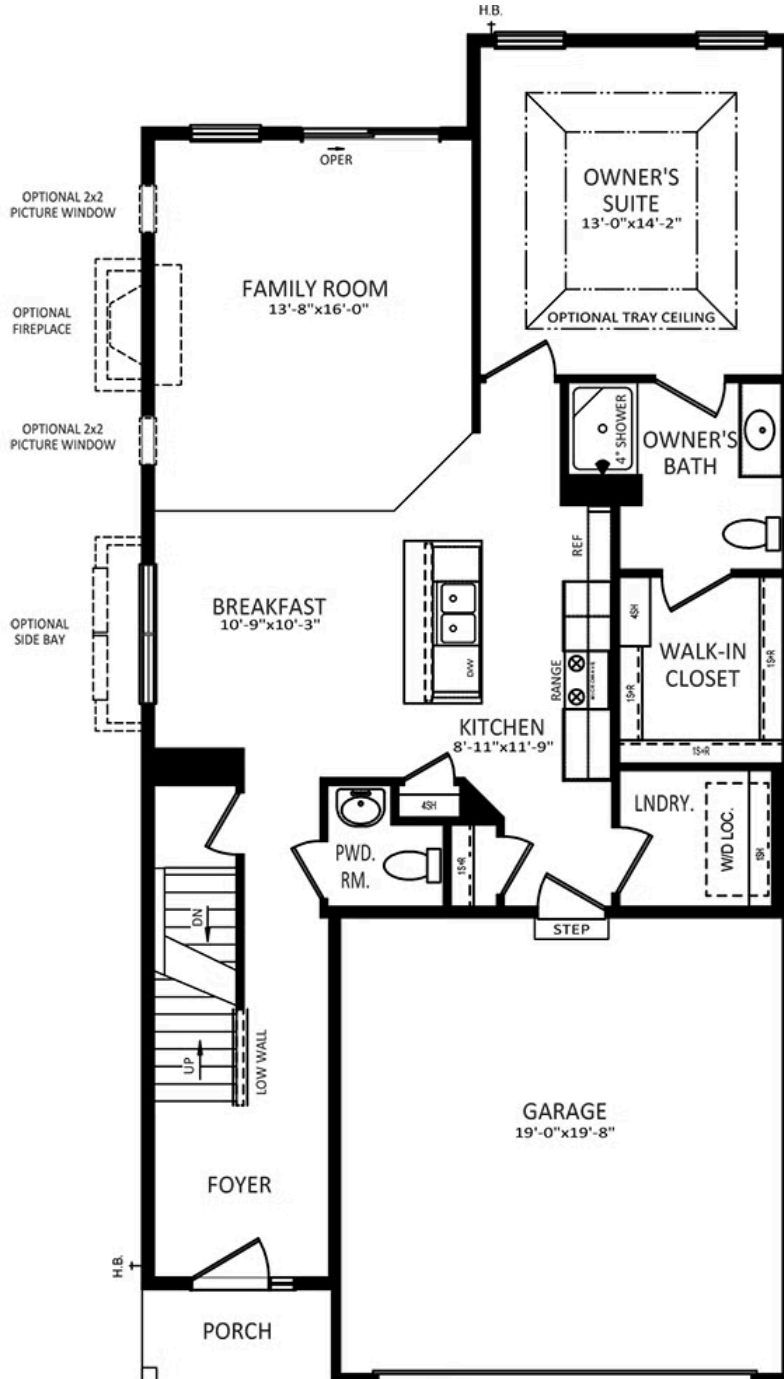
By Appointment: Open Wednesday - Saturday 10:00 am - 5:00 pm | Closed Sundays, Mondays, and Tuesdays



**Have Questions? Ask...**  
**KELLY**

(484) 772-2693 / [bhmarketing@berkshomes.com](mailto:bhmarketing@berkshomes.com)

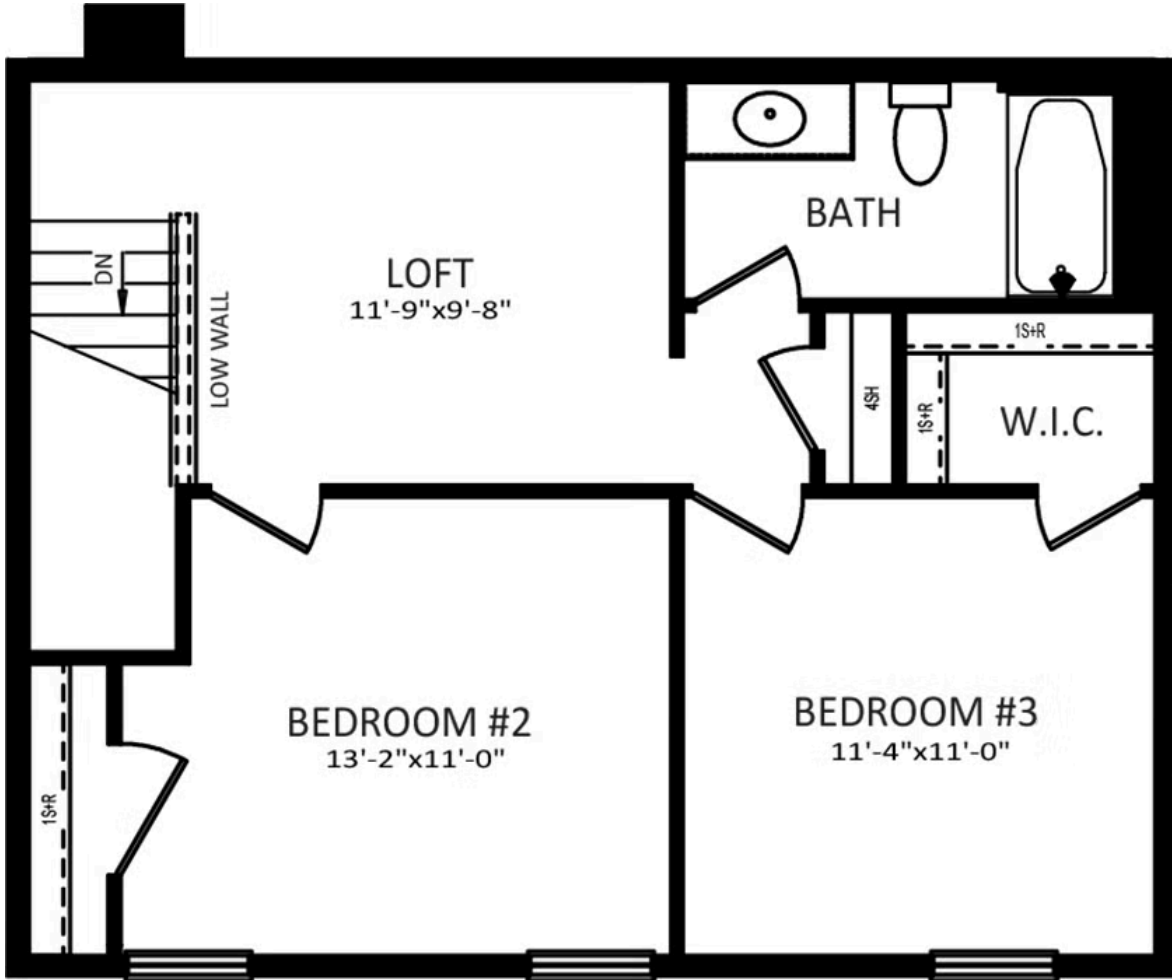




**Have Questions? Ask...**  
**KELLY**

(484) 772-2693 / [bhmarketing@berkshomes.com](mailto:bhmarketing@berkshomes.com)





ELEVATIONS "A" & "C"



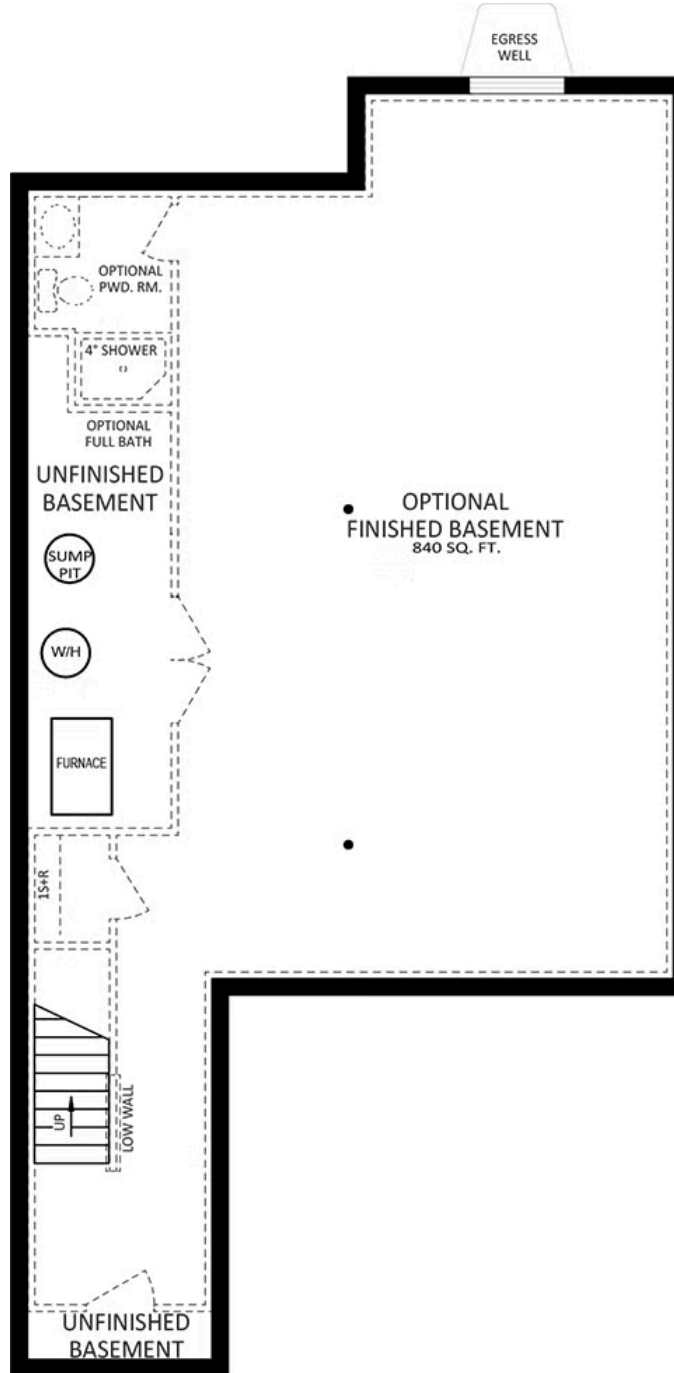
ELEVATIONS "B" & "D"



**Have Questions? Ask...**  
KELLY

(484) 772-2693 / [bhmarketing@berkshomes.com](mailto:bhmarketing@berkshomes.com)

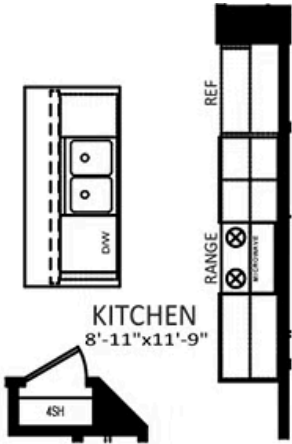




**Have Questions? Ask...**  
**KELLY**

(484) 772-2693 / [bhmarketing@berkshomes.com](mailto:bhmarketing@berkshomes.com)





**OPTIONAL ALTERNATE  
KITCHEN LAYOUT**



**OWNER'S BATH  
DOUBLE BOWL  
VANITY PACKAGE**



**Have Questions? Ask...**  
**KELLY**

(484) 772-2693 / [bhmarketing@berkshomes.com](mailto:bhmarketing@berkshomes.com)

