



QUICK MOVE-IN

FLOORPLAN

Magnolia

COMMUNITY

Elizabeth Village



**3
Beds**



**3.5
Baths**



**2-Car
Garage**



**2654
Sq. Ft.**

Buyers who use our preferred partners will receive up to a \$10,000 credit in the Selection Gallery to apply toward interior finishes. The home's structural features are already in place, allowing you to focus on selecting the finishes that best fit your personal style. All interior selections must be completed by June 18th, 2026.

This well-designed two-story home delivers the space and functionality modern families need — and with your interior selections still to come, you have the chance to personalize every detail.

The main level welcomes you with a foyer that opens into a comfortable, connected living space. The kitchen flows naturally into the family room, creating an easy...

Central Dauphin School District

Sales Office Hours

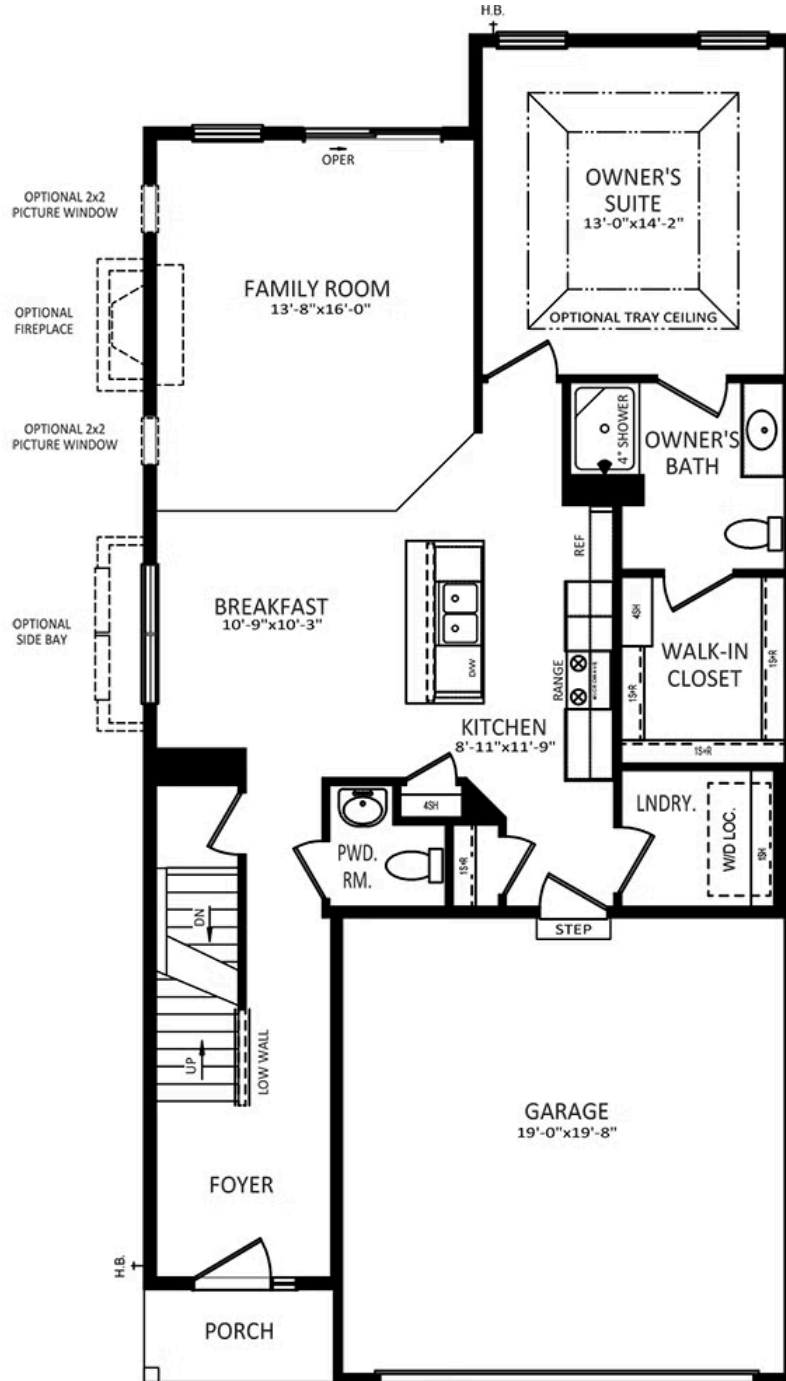
By Appointment: Open Wednesday - Saturday 10:00 am - 5:00 pm | Closed Sundays, Mondays, and Tuesdays



Have Questions? Ask...
KELLY

(484) 772-2693 / bhmarketing@berkshomes.com

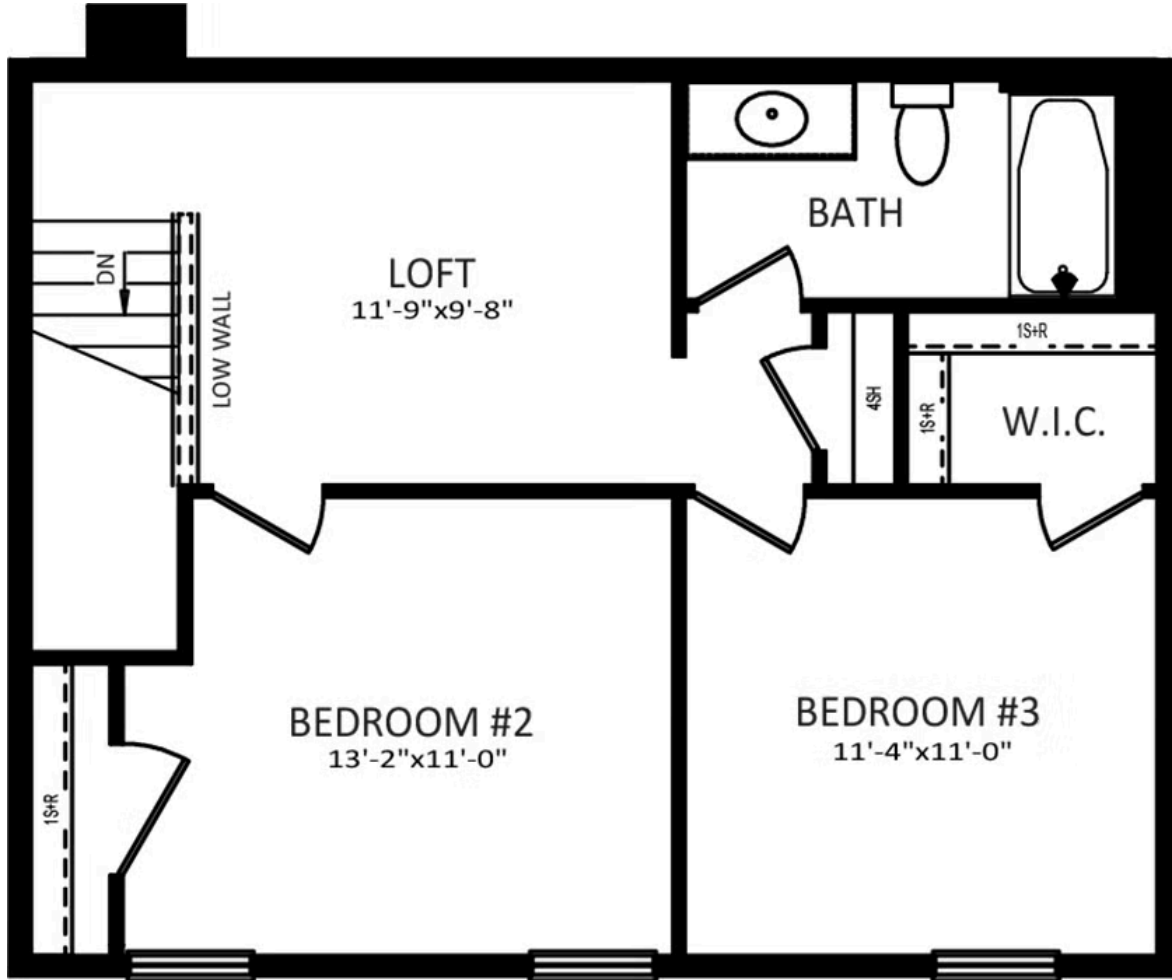




Have Questions? Ask...
KELLY

(484) 772-2693 / bhmarketing@berkshomes.com





ELEVATIONS "A" & "C"



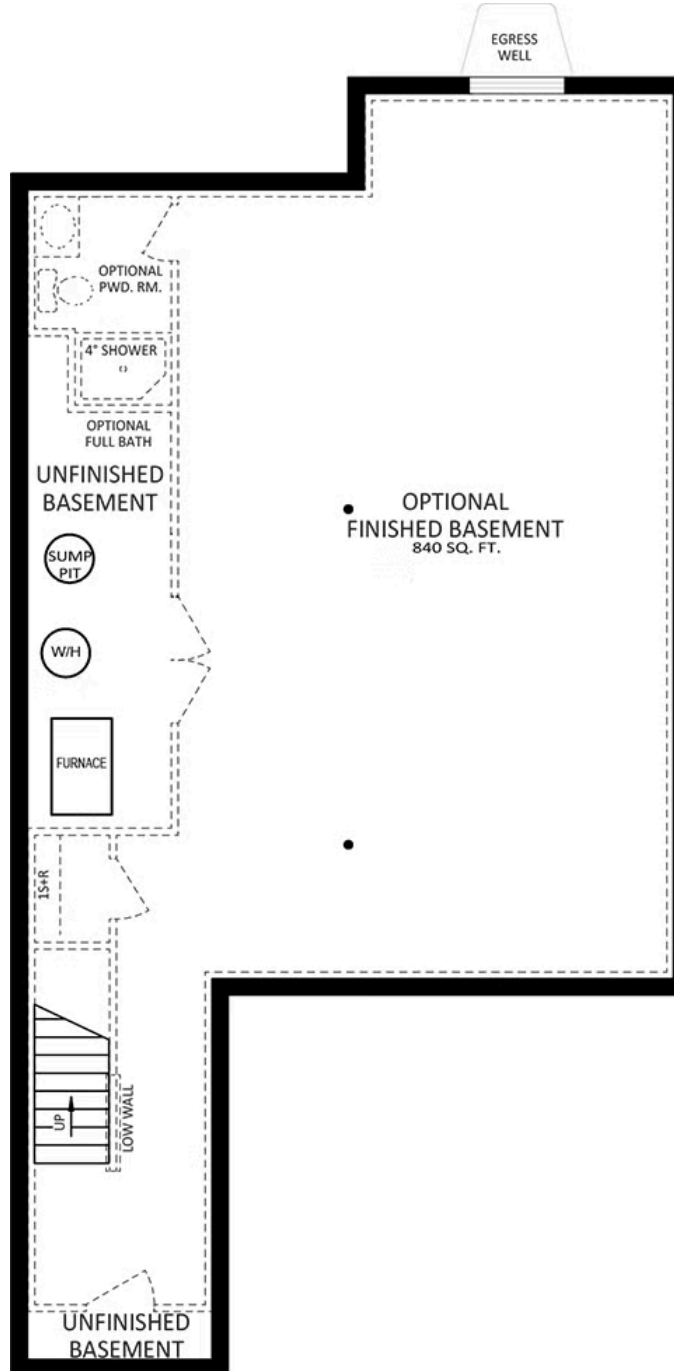
ELEVATIONS "B" & "D"



Have Questions? Ask...
KELLY

(484) 772-2693 / bhmarketing@berkshomes.com



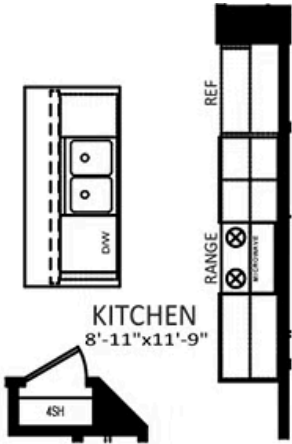


Have Questions? Ask...
KELLY

(484) 772-2693 / bhmarketing@berkshomes.com



1038 Addie Lane LOT 2305



**OPTIONAL ALTERNATE
KITCHEN LAYOUT**



**OWNER'S BATH
DOUBLE BOWL
VANITY PACKAGE**



Have Questions? Ask...
KELLY

(484) 772-2693 / bhmarketing@berkshomes.com

