

2461 East Venisa Drive

MODEL HOME

FLOORPLAN

Emily

COMMUNITY

Ridgewood



**4
Beds**



**3.0
Baths**



**2-Car
Garage**



**2798
Sq. Ft.**



This Model Home puts our best features on full display.

Step inside to engineered vinyl plank flooring that runs throughout the entire first floor. The family room is warm and inviting, with a gas fireplace, upgraded windows, and recessed lighting. The converted study offers a quiet retreat with a double bay window and recessed lighting — a great example of how the flex room can be personalized to fit your lifestyle. A mudroom with bench shows how everyday function can be built right into your home.

The kitchen is the heart of this Model Home, featuring an island, quartz countertops, tile backsplash, upgraded cabinetry, stainless steel appliances, and recessed...

Sales Office Hours

By Appointment Only



Have Questions? Ask...

KELLY

(484) 772-2693 / bhmarketing@berkshomes.com





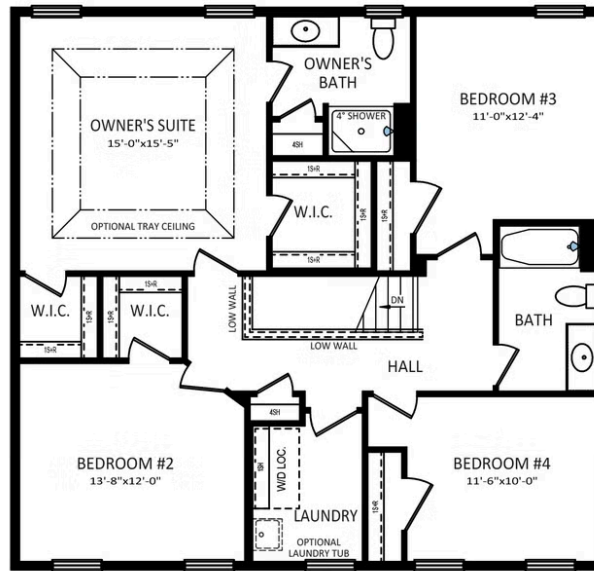
Have Questions? Ask...
KELLY

(484) 772-2693 / bhmarketing@berkshomes.com

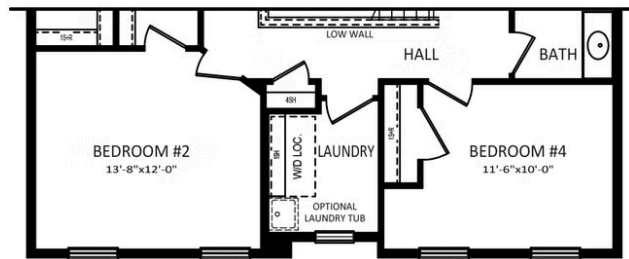




OWNER'S BATH
UPGRADE PACKAGE



SECOND FLOOR



SECOND FLOOR
ELEVATION "C"

SECOND LEVEL

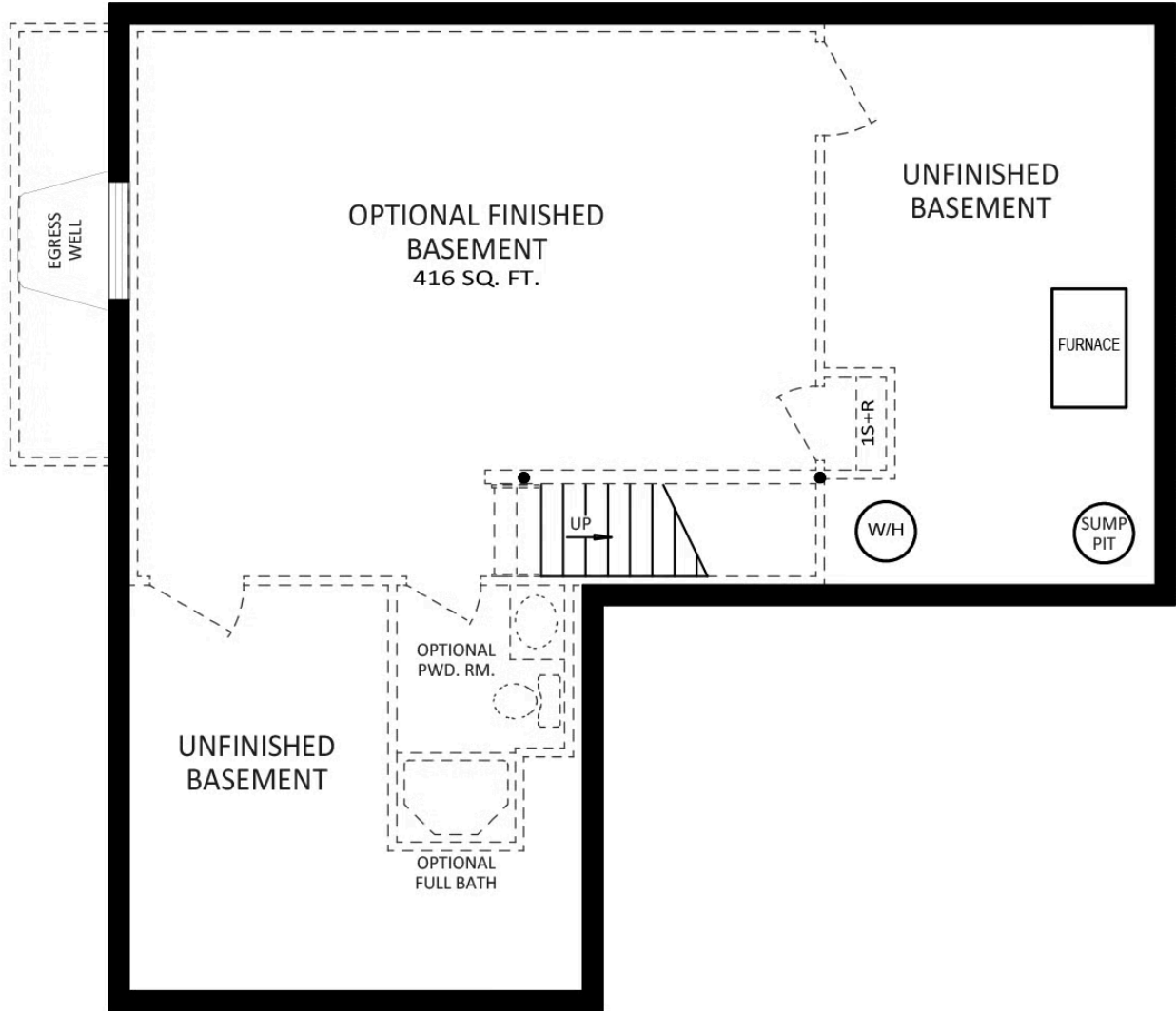


Have Questions? Ask...
KELLY

(484) 772-2693 / bhmarketing@berkshomes.com



OPTIONAL FINISHED BASEMENT
WITH FAMILY ROOM EXPANSION
(+60 SQ. FT.)



FOUNDATION

LOWER LEVEL



Have Questions? Ask...
KELLY

(484) 772-2693 / bhmarketing@berkshomes.com

