

UNDER CONSTRUCTION

FLOORPLAN

Emily

COMMUNITY

Ridgewood



**4
Beds**



**2.5
Baths**



**2-Car
Garage**



**2334
Sq. Ft.**

This home comes loaded with upgrades that make a real difference day to day.

The kitchen is the standout — quartz countertops, tile backsplash, upgraded cabinetry, stainless steel appliances, a center island, and recessed lighting. The Morning Room addition connects seamlessly to the kitchen and opens to a 12x12 deck out back. Engineered vinyl plank runs throughout the entire first floor, with upgraded windows and recessed lighting carried into the Family Room. The Flex Room has been finished as a dedicated study, and the Mudroom includes a built-in bench.

Upstairs, the Owner's Suite features recessed lighting and engineered vinyl plank in the Owner's Bath, with a double vanity and tile shower. 3 more bedrooms, a hall...

Sales Office Hours

By Appointment Only



REPRESENTATIVE PHOTO



REPRESENTATIVE PHOTO



REPRESENTATIVE PHOTO



Have Questions? Ask...
KELLY

(484) 772-2693 / bhmarketing@berkshomes.com





FIRST FLOOR
FIRST LEVEL



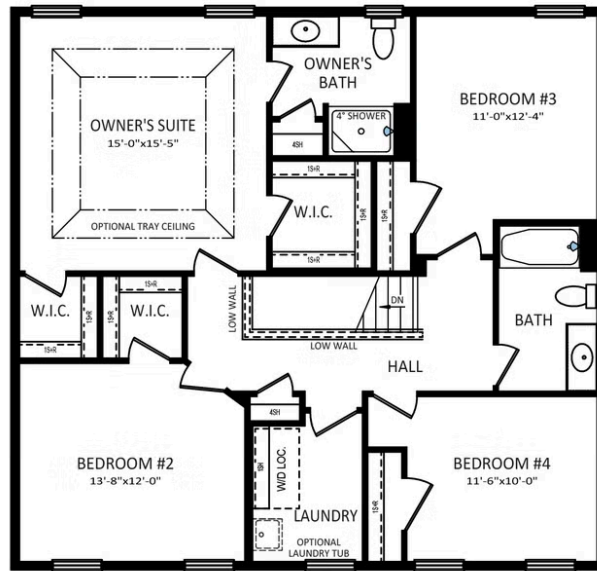
Have Questions? Ask...
KELLY

(484) 772-2693 / bhmarketing@berkshomes.com

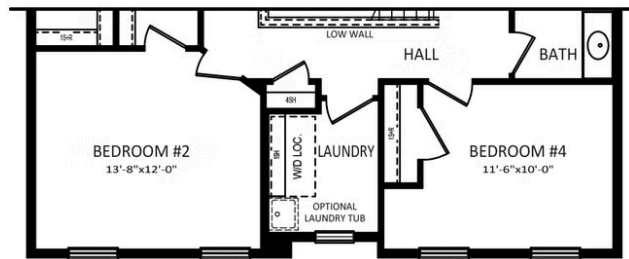




OWNER'S BATH
UPGRADE PACKAGE



SECOND FLOOR



SECOND FLOOR
ELEVATION "C"

SECOND LEVEL

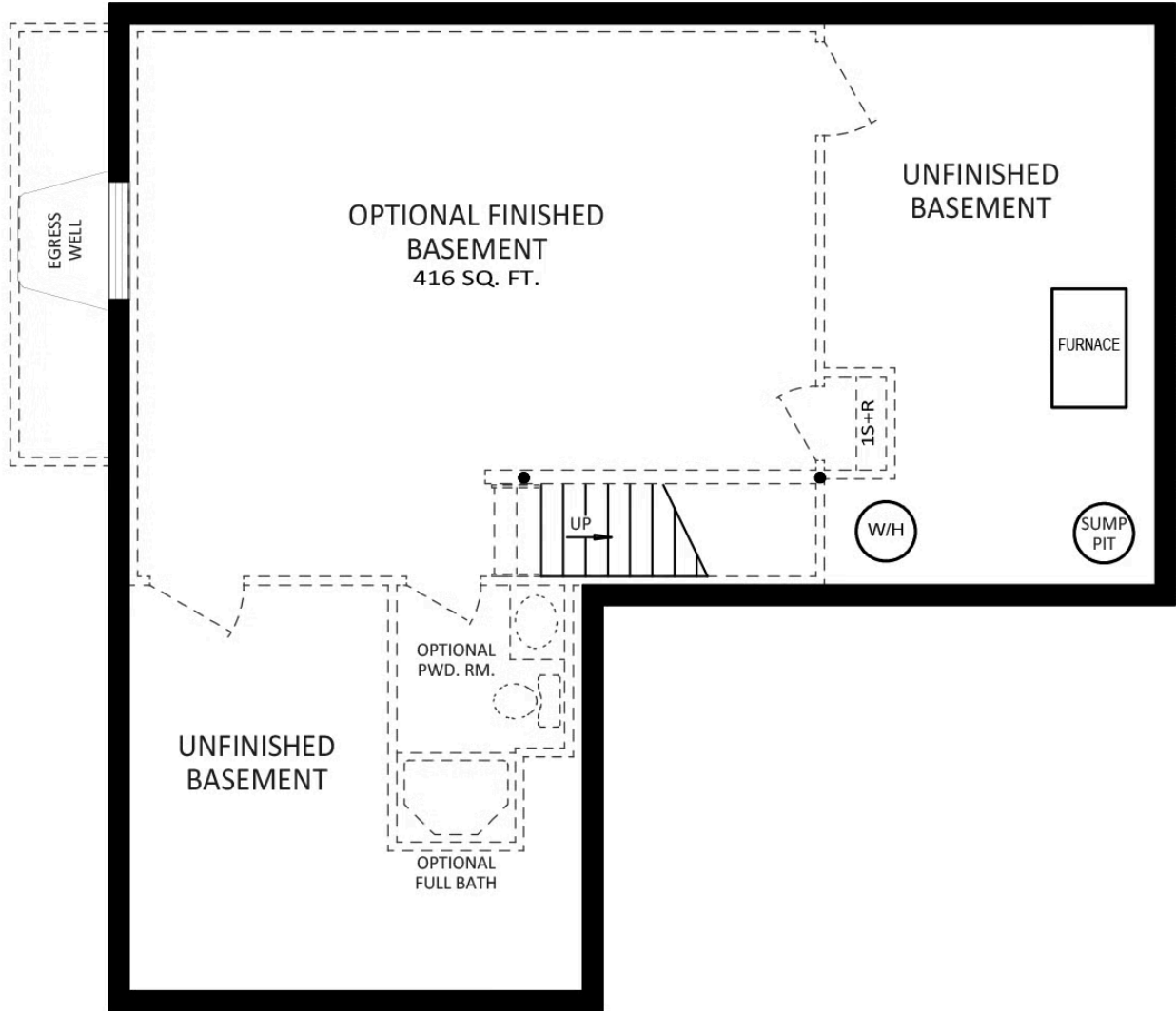


Have Questions? Ask...
KELLY

(484) 772-2693 / bhmarketing@berkshomes.com



OPTIONAL FINISHED BASEMENT
WITH FAMILY ROOM EXPANSION
(+60 SQ. FT.)



FOUNDATION

LOWER LEVEL



Have Questions? Ask...
KELLY

(484) 772-2693 / bhmarketing@berkshomes.com

