

QUICK MOVE-IN

FLOORPLAN

Barberry

COMMUNITY

Deerfield Duplex Homes



**3
Beds**



**2.5
Baths**



**2-Car
Garage**



**1853
Sq. Ft.**



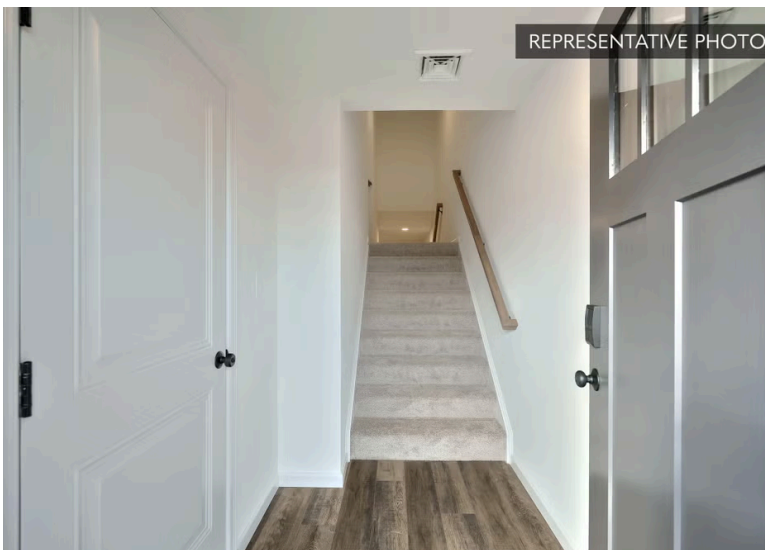
REPRESENTATIVE PHOTO



This thoughtfully designed three-bedroom home offers open living spaces, functional rooms, and upgraded finishes throughout.

The family room serves as the heart of the home, featuring recessed lighting and flowing seamlessly into the breakfast area and kitchen. The kitchen is well-appointed with an island, quartz countertops, tile backsplash, upgraded cabinetry, stainless steel appliances, and recessed lighting — designed to support both everyday meals and entertaining. A deck off the kitchen provides additional outdoor living space. A powder room completes the main level.

REPRESENTATIVE PHOTO



Upstairs, the owner's suite features recessed lighting an...

Sales Office Hours

By Appointment: Open Wednesday - Saturday 10:00 am - 5:00 pm | Closed Sundays, Mondays, and Tuesdays



Have Questions? Ask...
KELLY

(484) 772-2693 / bhmarketing@berkshomes.com





ELEVATIONS "A" & "B"

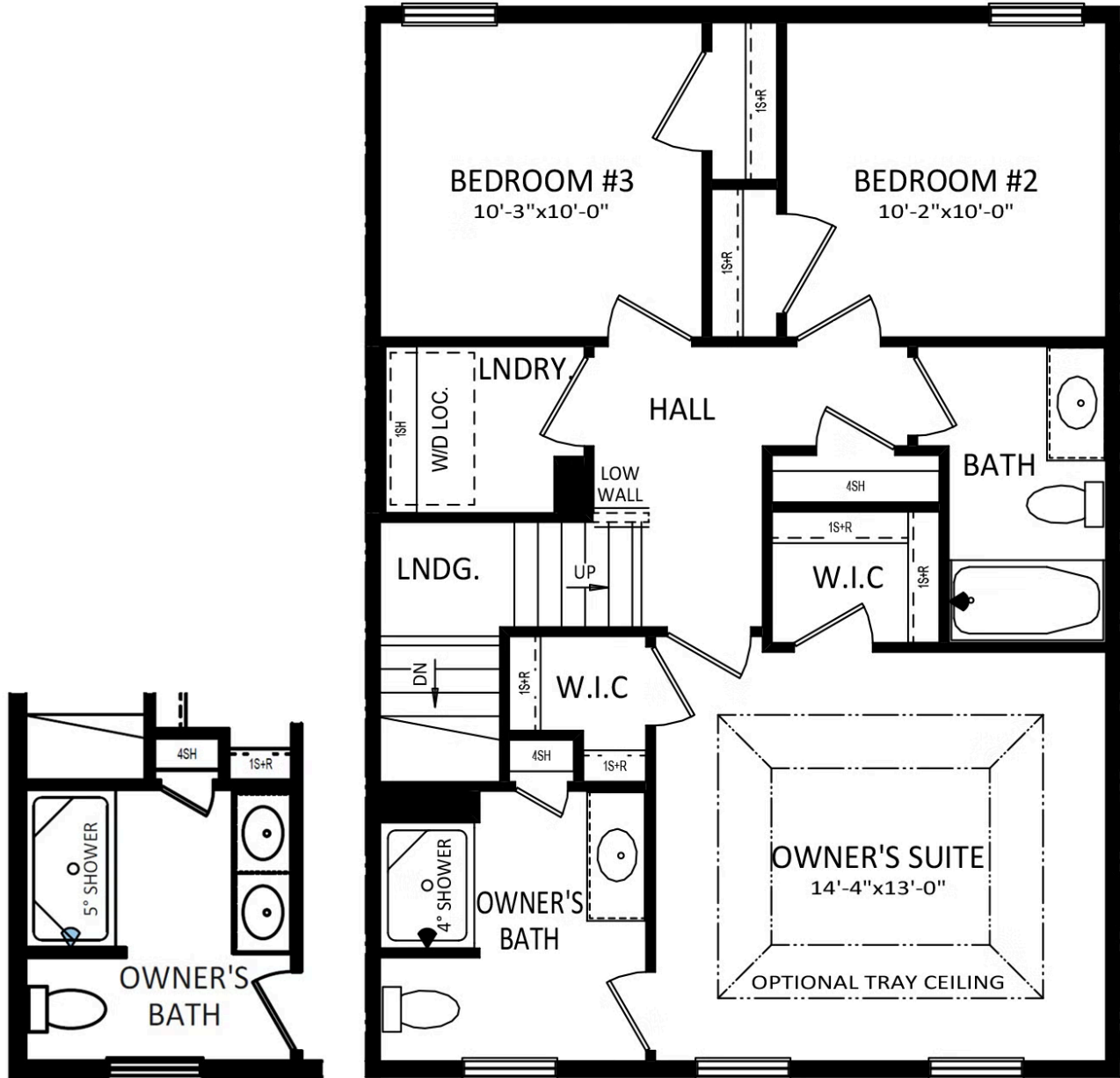
BARBERRY FIRST LEVEL



Have Questions? Ask...
KELLY

(484) 772-2693 / bhmarketing@berkshomes.com





DOUBLE-BOWL
VANITY PACKAGE

ELEVATIONS "A" & "B"

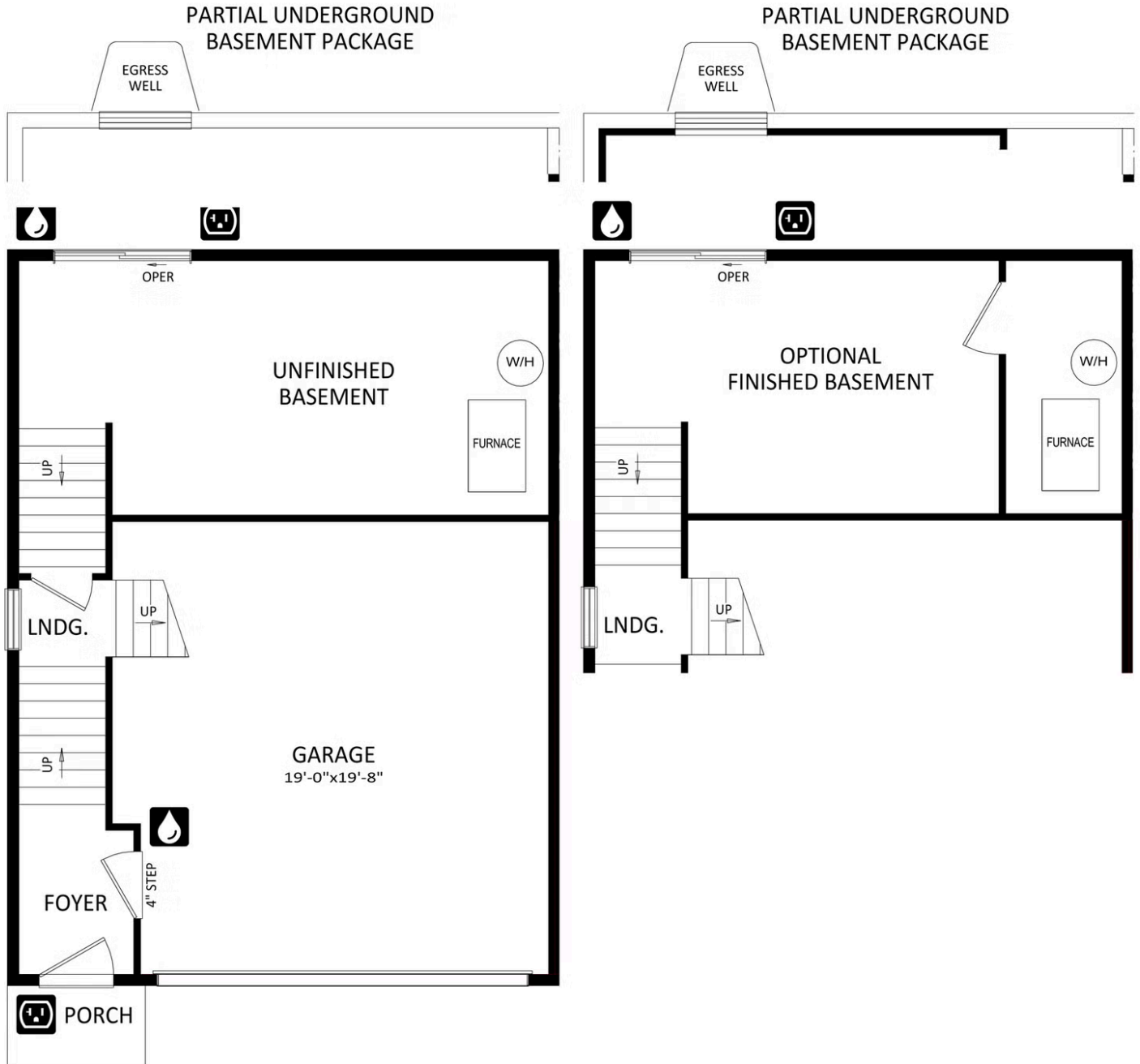
BARBERRY SECOND LEVEL



Have Questions? Ask...
KELLY

(484) 772-2693 / bhmarketing@berkshomes.com





BARBERRY LOWER LEVEL



Have Questions? Ask...
KELLY

(484) 772-2693 / bhmarketing@berkshomes.com

