

706 Deerfield Boulevard

MODEL HOME

FLOORPLAN

Ivy

COMMUNITY

Deerfield Duplex Homes



**3
Beds**



**2.5
Baths**



**1-Car
Garage**



**1780
Sq. Ft.**

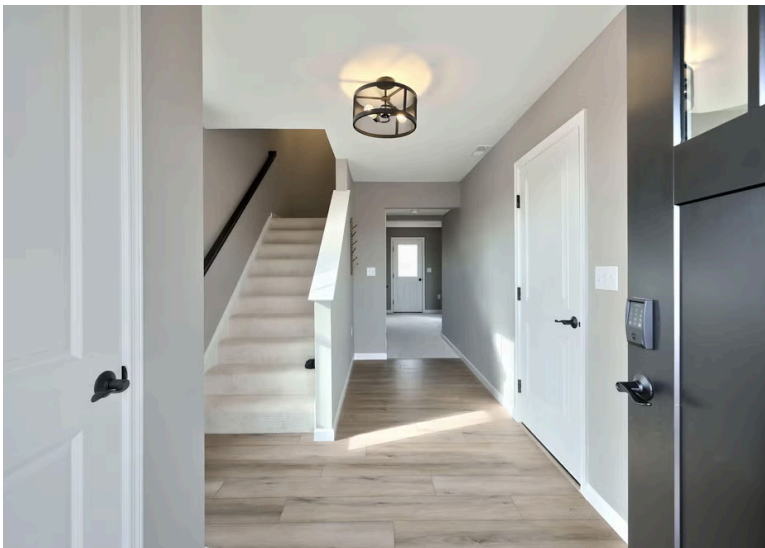


This thoughtfully designed Model Home offers a layout that feels open, functional, and easy to live in. The main level features engineered vinyl plank flooring throughout and a spacious family room with recessed lighting, creating a comfortable space for everyday living and gatherings. The upgraded kitchen anchors the home with a center island, quartz countertops, tile backsplash, upgraded cabinetry, stainless steel appliances, under-cabinet lighting, and recessed lighting—connecting seamlessly to the breakfast area highlighted by a double bay window that brings in natural light.

Upstairs, the owner's suite includes recessed lighting and a private bath with a double vanity and a tile shower with a seat. Two additional bedrooms and a full bath provid...

Sales Office Hours

By Appointment: Open Wednesday - Saturday 10:00 am - 5:00 pm | Closed Sundays, Mondays, and Tuesdays



Have Questions? Ask...
KELLY

(484) 772-2693 / bhmarketing@berkshomes.com

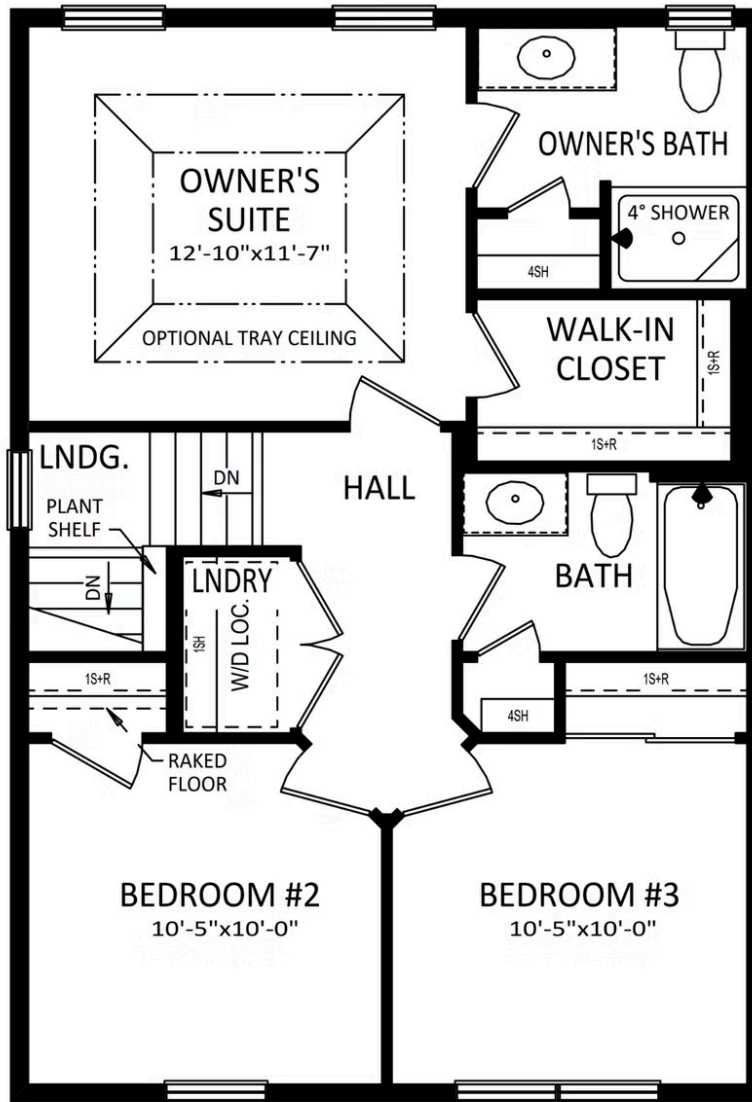




Have Questions? Ask...
KELLY

(484) 772-2693 / bhmarketing@berkshomes.com





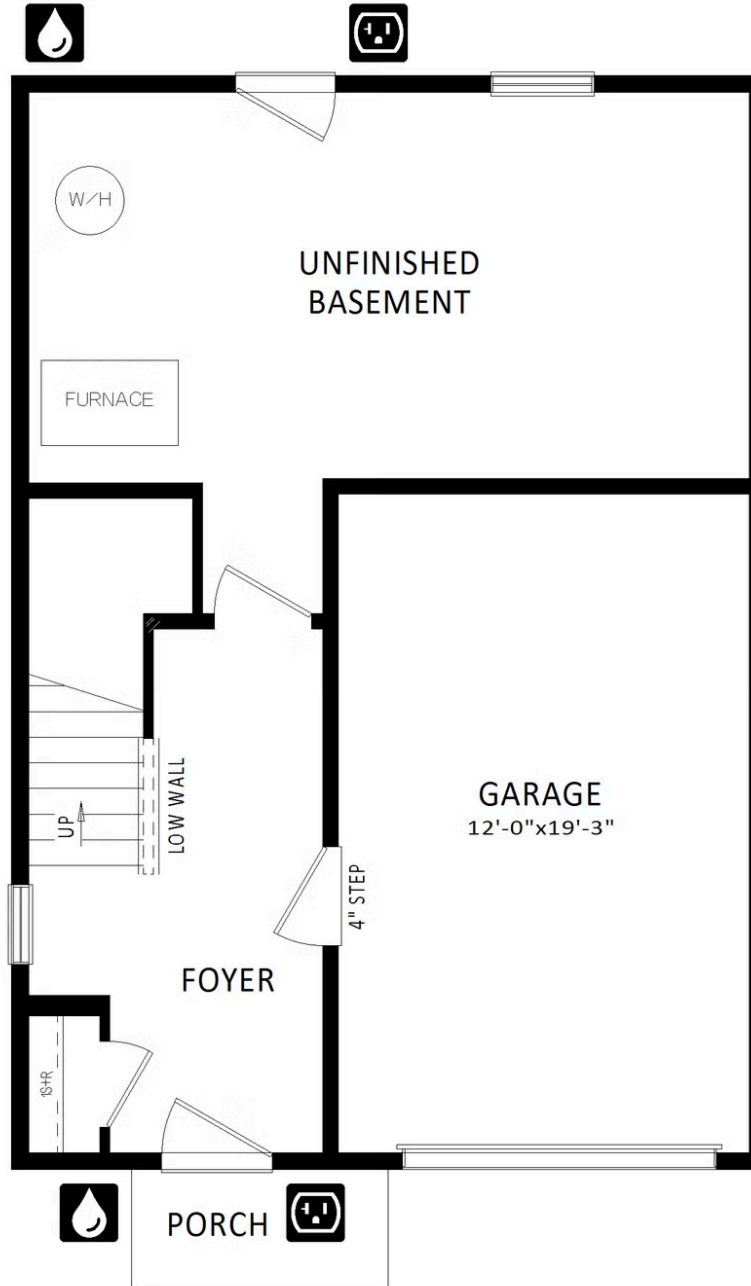
ELEVATIONS "A" & "D"



Have Questions? Ask...
KELLY

(484) 772-2693 / bhmarketing@berkshomes.com





Have Questions? Ask...
KELLY

(484) 772-2693 / bhmarketing@berkshomes.com

