



QUICK MOVE-IN

FLOORPLAN

Iris

COMMUNITY

Villas At Pine View



**3
Beds**



**2.5
Baths**



**1-Car
Garage**



**1279
Sq. Ft.**



This thoughtfully designed 3-story home offers space and flexibility with high-end finishes.

The main living level centers around an open-concept layout connecting a spacious Family Room, a sun-filled Breakfast area, and a beautifully upgraded Kitchen. The Kitchen features an island, quartz countertops, tile backsplash, upgraded cabinetry, stainless steel appliances, and recessed lighting. A powder room and access to a 10' x 10' deck round out the main floor.

Upstairs, the Owner's Suite offers a peaceful retreat with a private bath featuring a double vanity, plus a generous walk-in closet. Two additional bedrooms share a full hall bath, and a conveniently located laundry room keeps everyday living simple. Engineered vinyl plank flooring flows through the main living areas and the Owner's Ba...



Pine Grove Area School District

Sales Office Hours

By Appointment Only

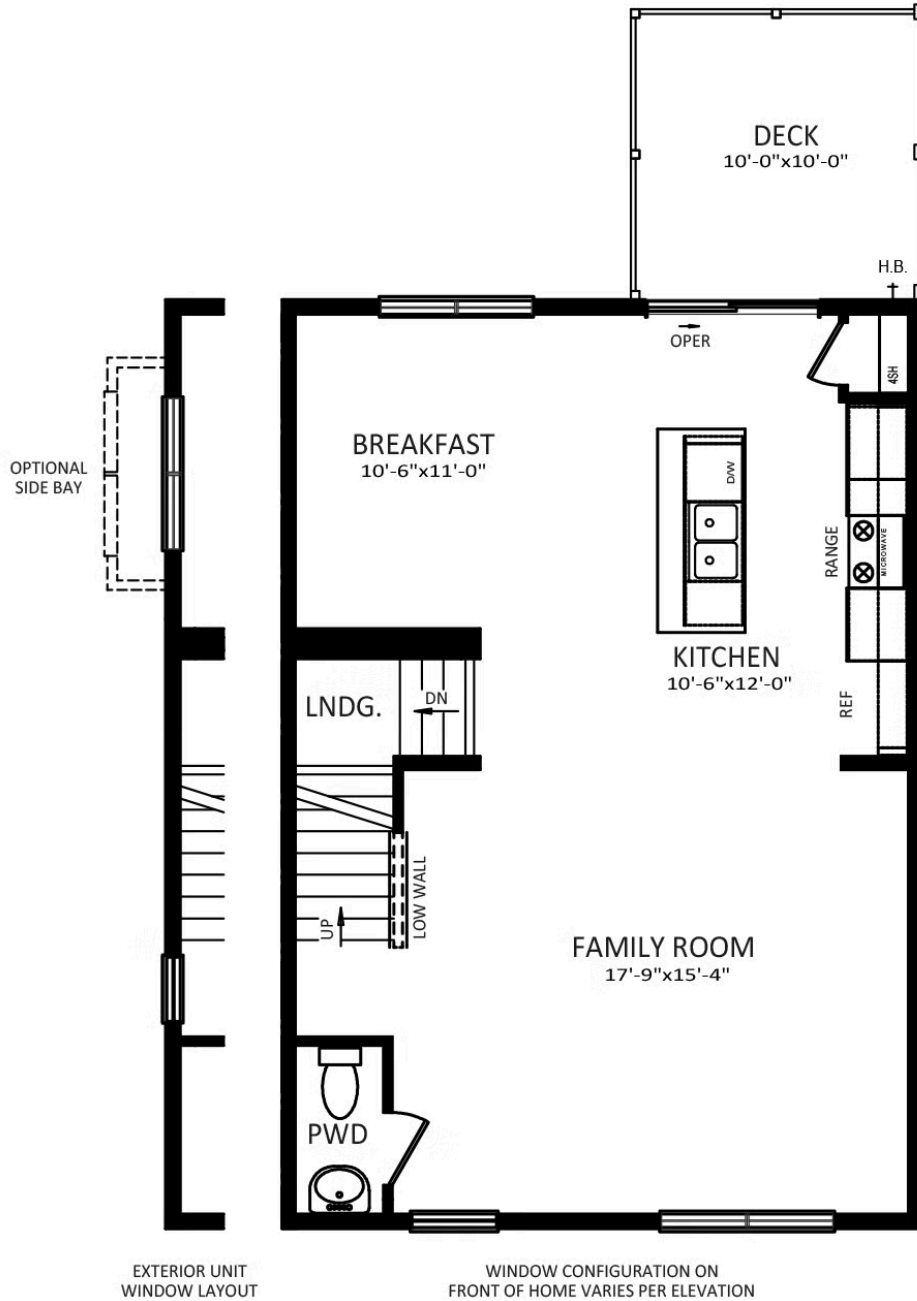


Have Questions? Ask...
KELLY

(484) 772-2693 / bhmarketing@berkshomes.com



210 Pine Crest Village Drive LOT 10



FIRST FLOOR

FIRST LEVEL

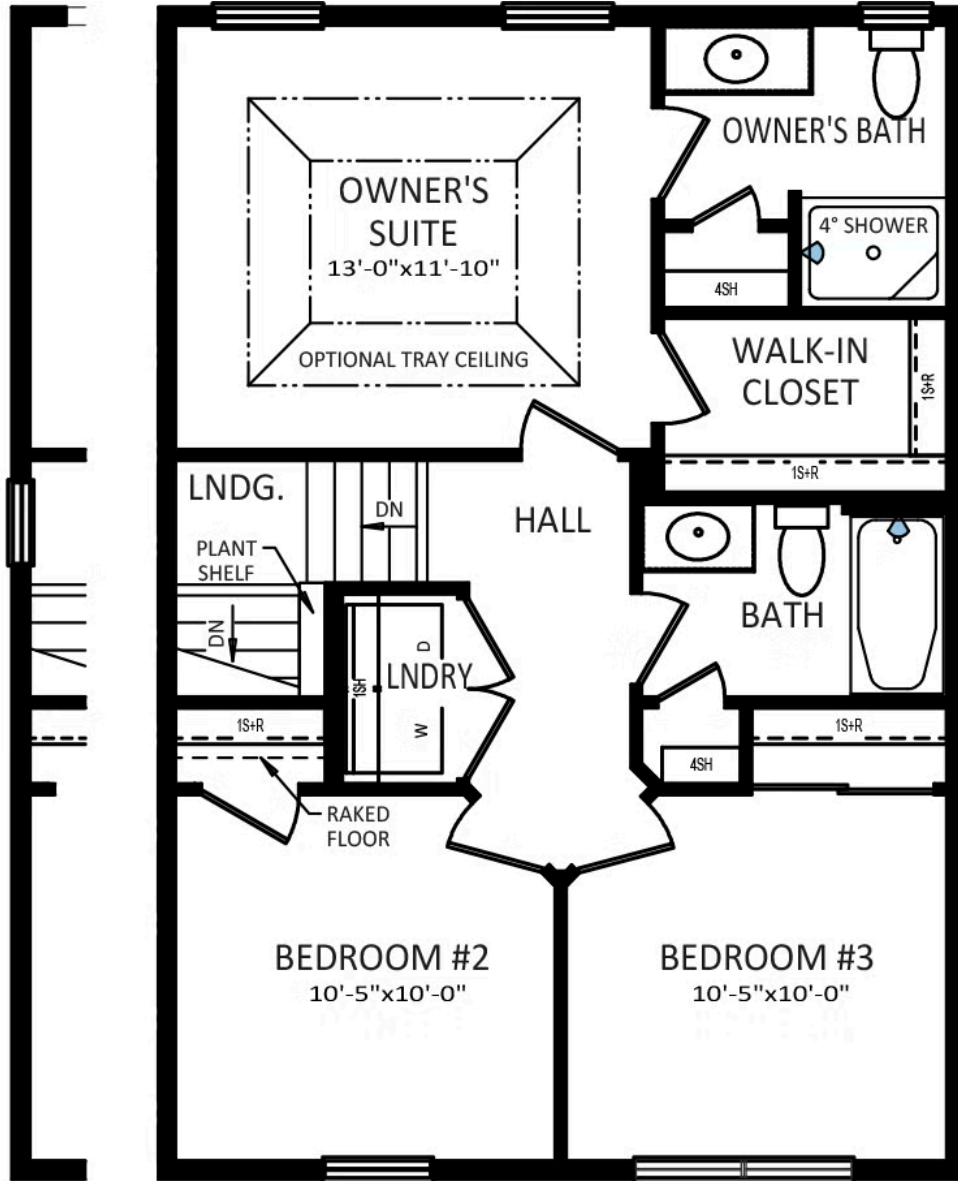


Have Questions? Ask...
KELLY

(484) 772-2693 / bhmarketing@berkshomes.com



210 Pine Crest Village Drive LOT 10



EXTERIOR UNIT
WINDOW LAYOUT

WINDOW CONFIGURATION ON
FRONT OF HOME VARIES PER ELEVATION

SECOND FLOOR

SECOND LEVEL

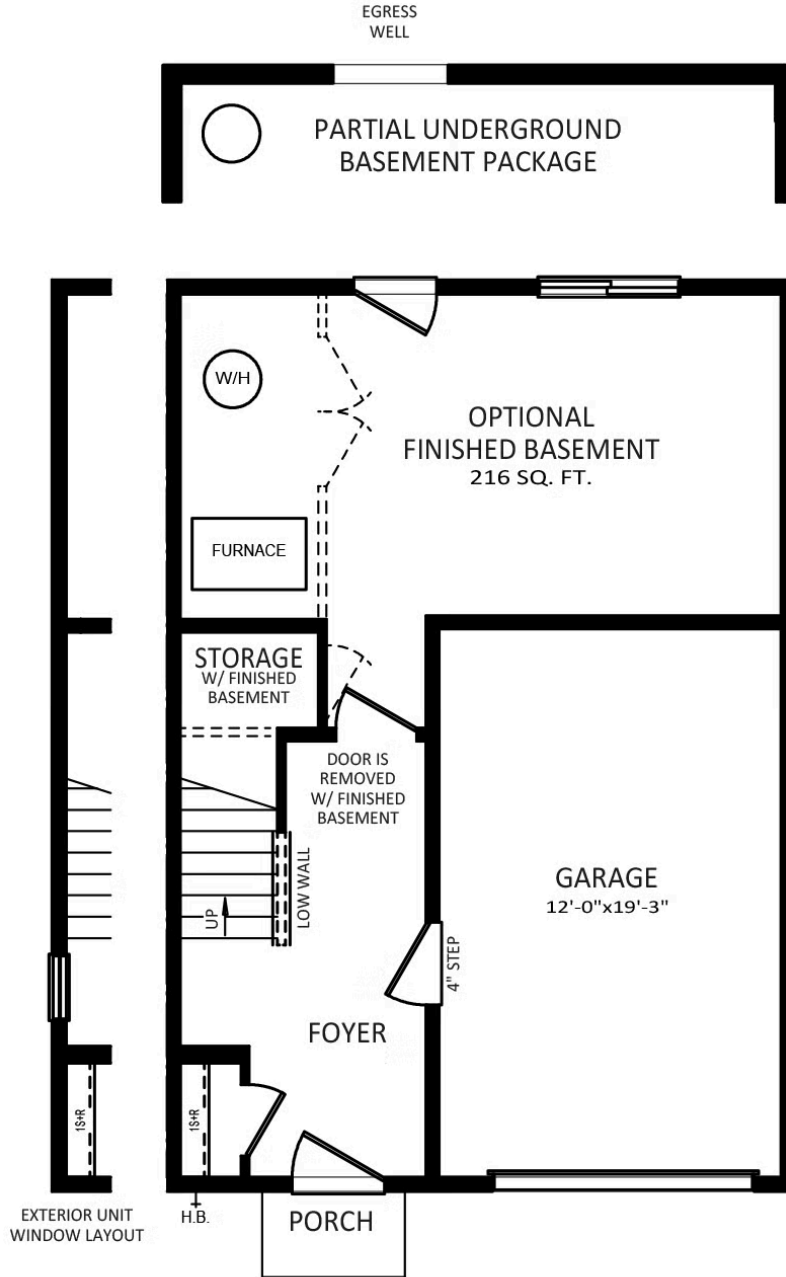


Have Questions? Ask...
KELLY

(484) 772-2693 / bhmarketing@berkshomes.com



210 Pine Crest Village Drive LOT 10



LOWER LEVEL

LOWER LEVEL

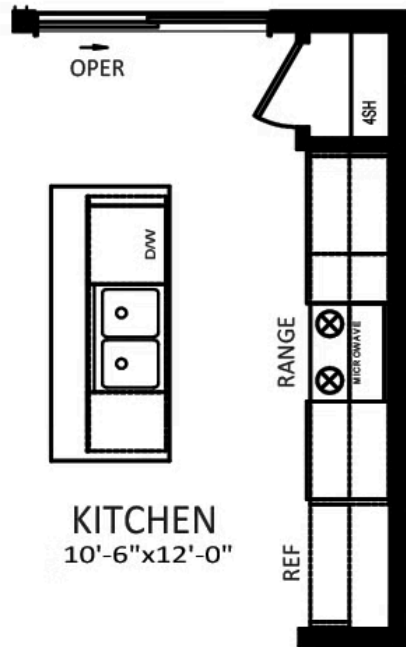


Have Questions? Ask...
KELLY

(484) 772-2693 / bhmarketing@berkshomes.com



210 Pine Crest Village Drive LOT 10



OPTIONAL ALTERNATE KITCHEN

FIRST LEVEL OPTION



Have Questions? Ask...
KELLY

(484) 772-2693 / bhmarketing@berkshomes.com



210 Pine Crest Village Drive LOT 10



OWNER'S BATH
DOUBLE BOWL
VANITY PACKAGE

SECOND LEVEL OPTION



Have Questions? Ask...
KELLY

(484) 772-2693 / bhmarketing@berkshomes.com

