



QUICK MOVE-IN

FLOORPLAN

Iris

COMMUNITY

Villas At Pine View



3
Beds



2.5
Baths



1-Car
Garage



1385
Sq. Ft.



This thoughtfully designed 3-story home offers the space and flexibility with high-end finishes.

The main living level centers around an open-concept layout connecting a spacious Family Room, a sun-filled Breakfast area, and a beautifully upgraded Kitchen. The Breakfast area features a double bay window that floods the space with natural light, creating the perfect spot to start your morning. The Kitchen features an island, quartz countertops, tile backsplash, upgraded cabinetry, stainless steel appliances, and recessed lighting.

Upstairs, the Owner's Suite offers a peaceful retreat with a private bath featuring a double vanity, plus a generous walk-in closet. Two additional bedrooms share a full hall bath, and a conveniently located laundry room keeps everyday living simple. Engineered vinyl plank flooring...



Pine Grove Area School District

Sales Office Hours

By Appointment Only

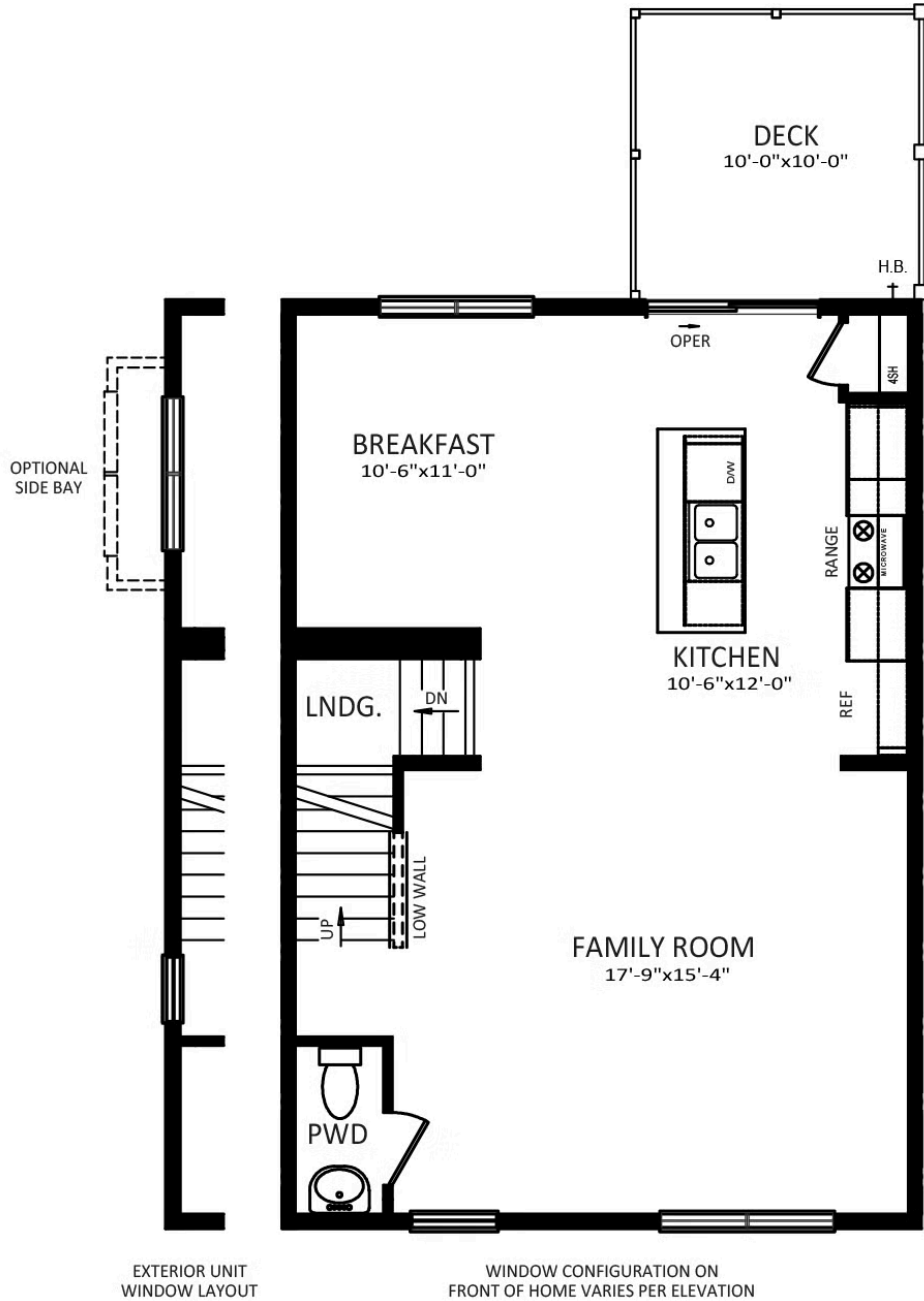


Have Questions? Ask...
KELLY

(484) 772-2693 / bhmarketing@berkshomes.com



216 Pine Crest Village Drive LOT 16



FIRST FLOOR

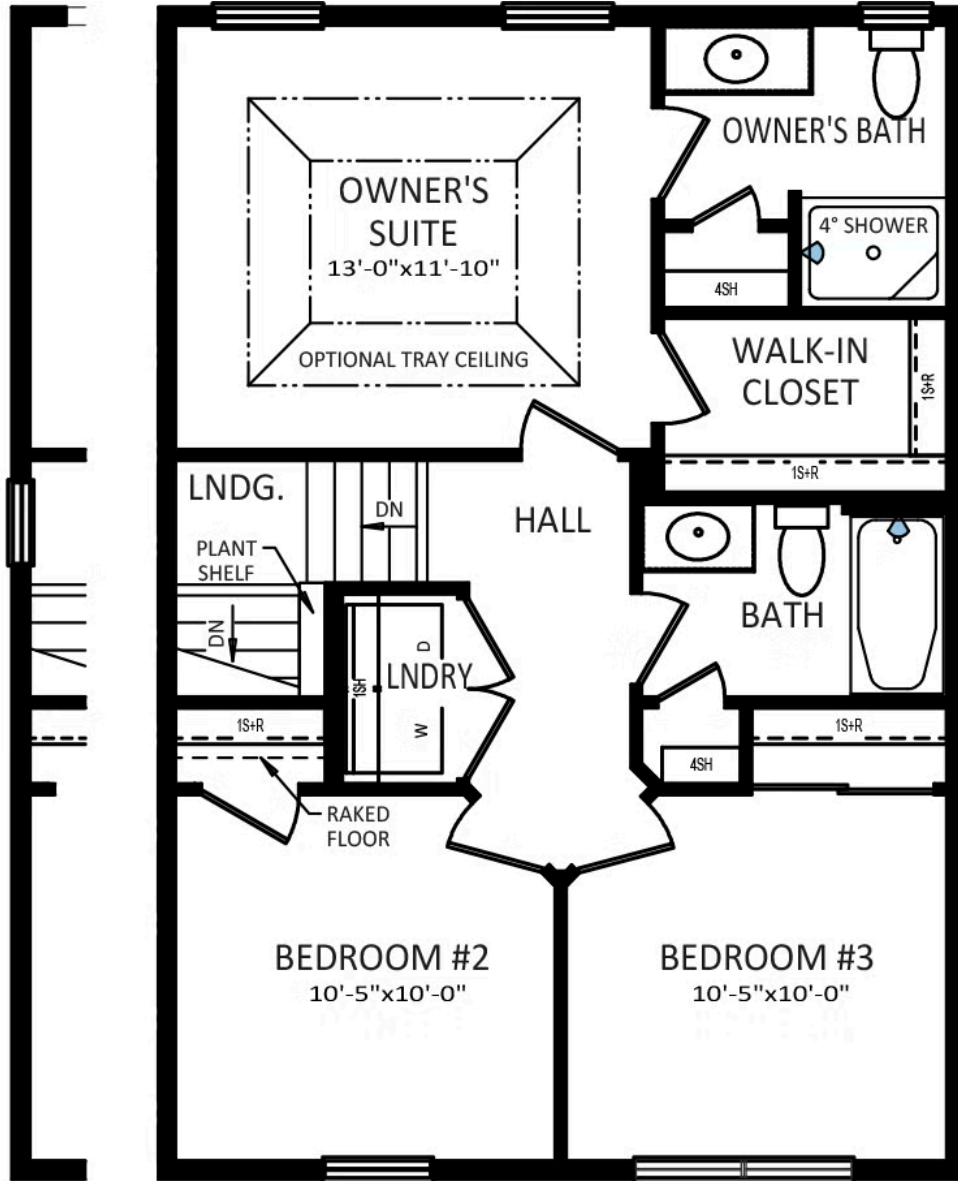
FIRST LEVEL

Have Questions? Ask...
KELLY

(484) 772-2693 / bhmarketing@berkshomes.com



216 Pine Crest Village Drive LOT 16



EXTERIOR UNIT
WINDOW LAYOUT

WINDOW CONFIGURATION ON
FRONT OF HOME VARIES PER ELEVATION

SECOND FLOOR

SECOND LEVEL

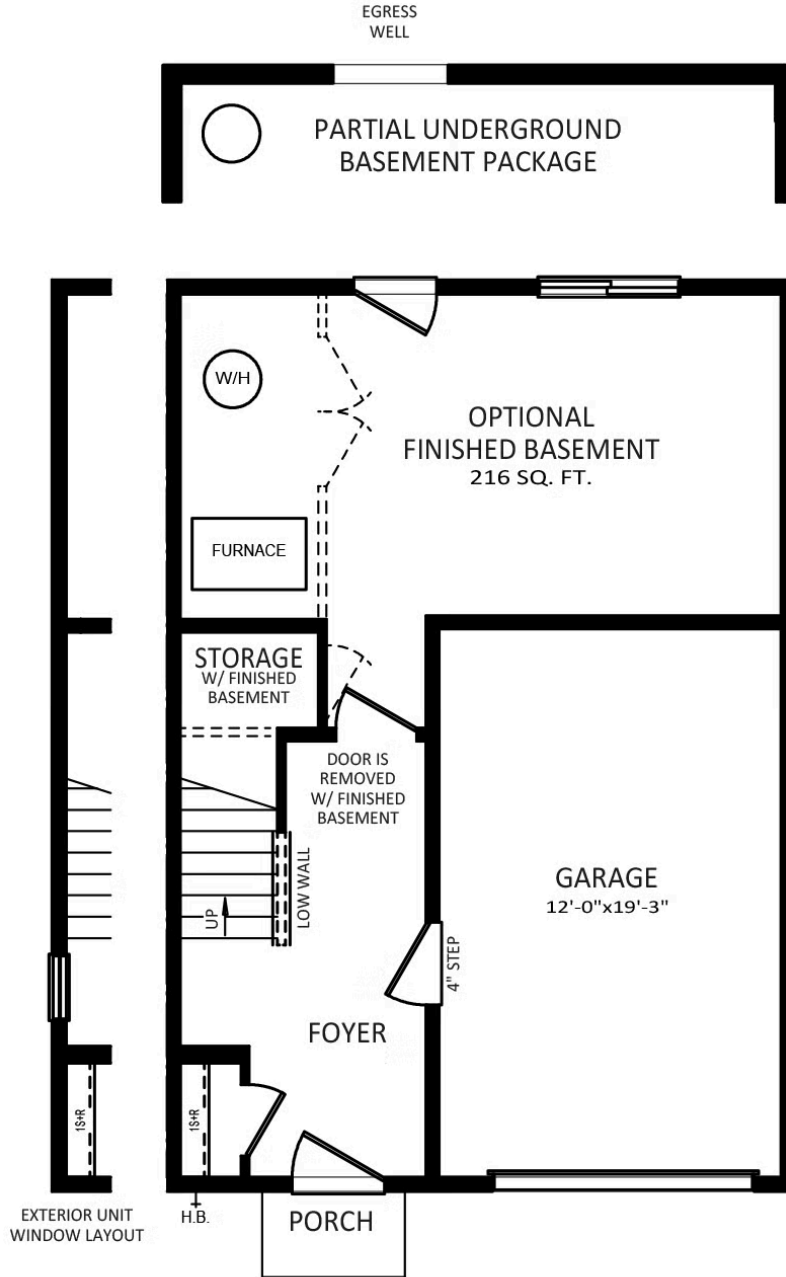


Have Questions? Ask...
KELLY

(484) 772-2693 / bhmarketing@berkshomes.com



216 Pine Crest Village Drive LOT 16



LOWER LEVEL

LOWER LEVEL

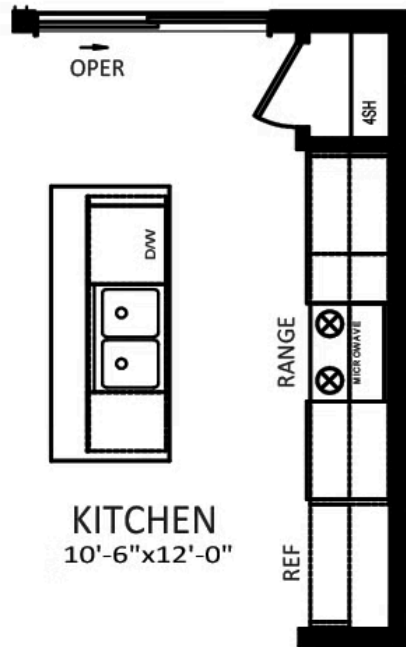


Have Questions? Ask...
KELLY

(484) 772-2693 / bhmarketing@berkshomes.com



216 Pine Crest Village Drive LOT 16



OPTIONAL ALTERNATE KITCHEN

FIRST LEVEL OPTION



Have Questions? Ask...
KELLY

(484) 772-2693 / bhmarketing@berkshomes.com



216 Pine Crest Village Drive LOT 16



OWNER'S BATH
DOUBLE BOWL
VANITY PACKAGE

SECOND LEVEL OPTION



Have Questions? Ask...
KELLY

(484) 772-2693 / bhmarketing@berkshomes.com

