

COMMUNITY
Woodlynn Preserve

PRICED FROM
\$422,990



**4
Beds**



**2.5 -
4
Baths**



**2-Car
Garage**



2,174

-

**2,881
Sq. Ft.**

This 2-story floor plan is a beauty! This home boasts over 2,100 sq. ft. of living space that includes a kitchen with a large center island that opens to the breakfast room and family room. Also, the first floor offers a flex room to use as you please. A trip to the second floor leaves nothing to be desired with a primary suite complete with a full bath and not one, but two walk-in closets. When you think it can't get any better, you will find three additional bedrooms, one with a walk-in closet of its own. The 2nd-floor laundry room and full bath complete this package. Want more? We have some fun options to choose from that you may not be able to resist!



Have Questions? Ask...

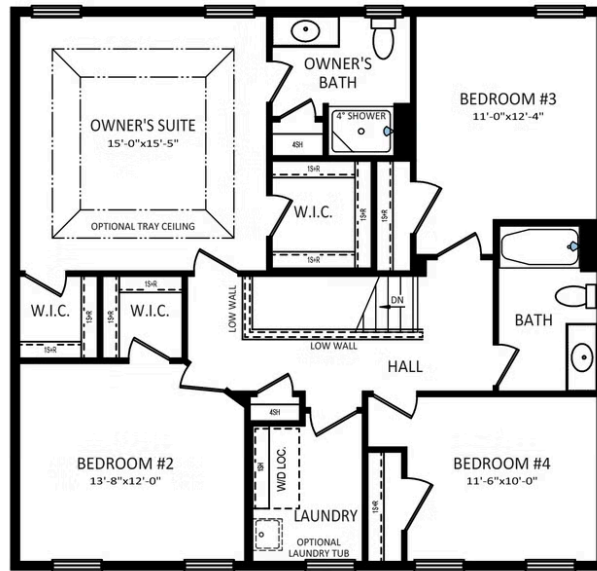
KELLY

(484) 772-2693 / bhmarketing@berkshomes.com

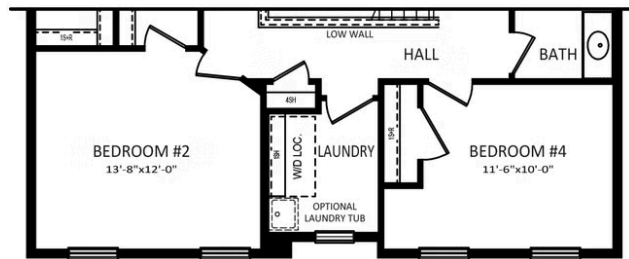




OWNER'S BATH
UPGRADE PACKAGE



SECOND FLOOR



SECOND FLOOR
ELEVATION "C"

EMILY FIRST LEVEL



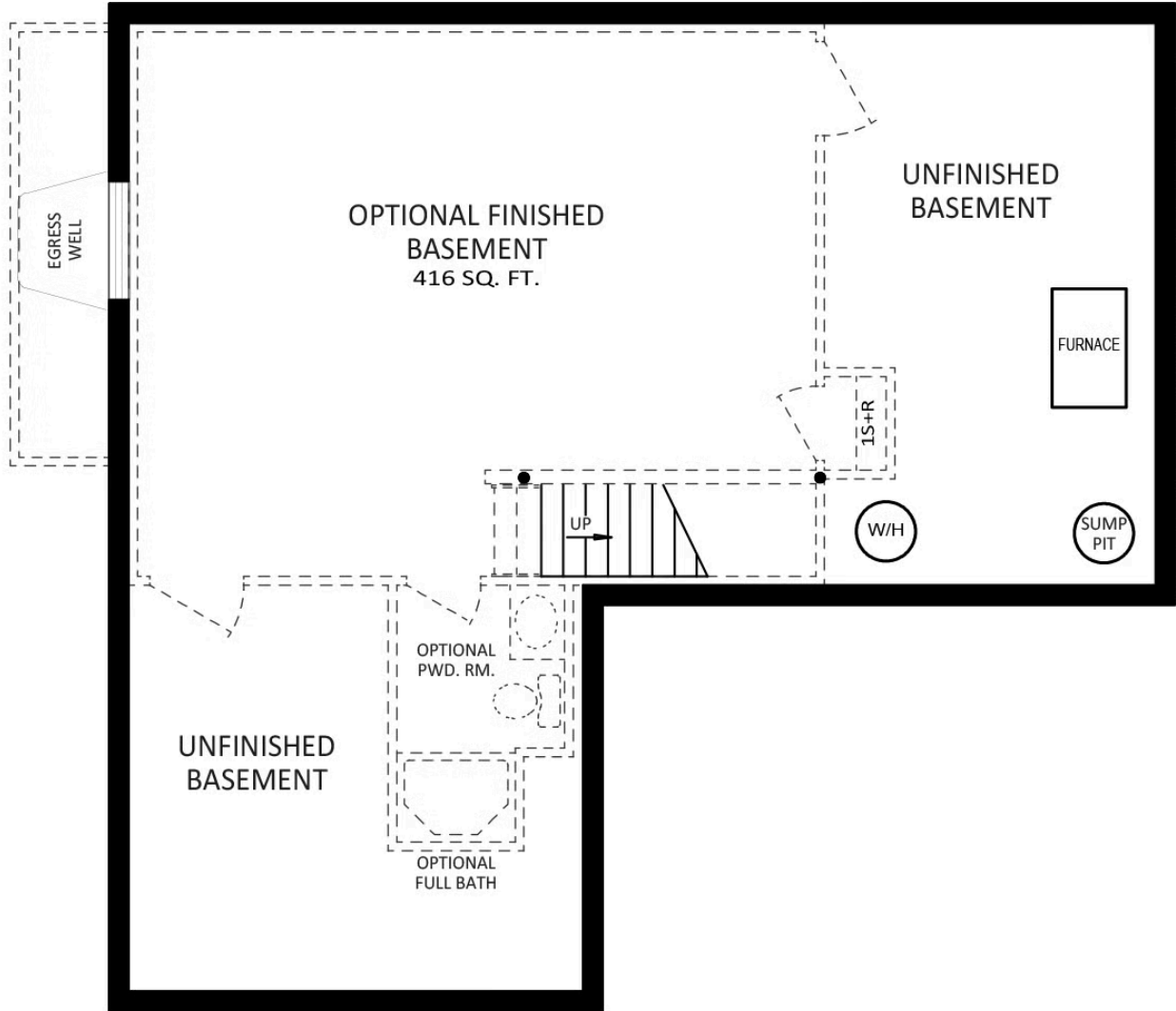
Have Questions? Ask...

KELLY

(484) 772-2693 / bhmarketing@berkshomes.com



OPTIONAL FINISHED BASEMENT
WITH FAMILY ROOM EXPANSION
(+60 SQ. FT.)



FOUNDATION

EMILY SECOND LEVEL

Have Questions? Ask...

KELLY

(484) 772-2693 / bhmarketing@berkshomes.com





Have Questions? Ask...

KELLY

(484) 772-2693 / bhmarketing@berkshomes.com

