

COMMUNITY  
**Woodlynn Preserve**

PRICED FROM  
**\$405,990**



**4  
Beds**



**2.5 -  
4  
Baths**



**2-Car  
Garage**



**1,909  
-  
2,571  
Sq. Ft.**

The Revere is a spacious 4-bedroom, 2.5-bathroom new home with an open, inviting floor plan. The family room seamlessly connects to the kitchen and breakfast area, creating a central hub for daily living and entertaining, and a flex room on the first floor provides additional living space that can be tailored to your needs. The first floor of this new home also includes an entry area off the kitchen that offers access to the powder room and the 2-car garage. Upstairs, the primary suite features a walk-in closet and a full private bath, providing a peaceful sanctuary for homeowners to enjoy. Three additional bedrooms, a full bath, and a laundry room complete this home, offering ample space for family members or guests. With options to expand the breakfast area, upgrade the primary bath, or finish the basement, you can customize this home to fit your unique style and preferences.

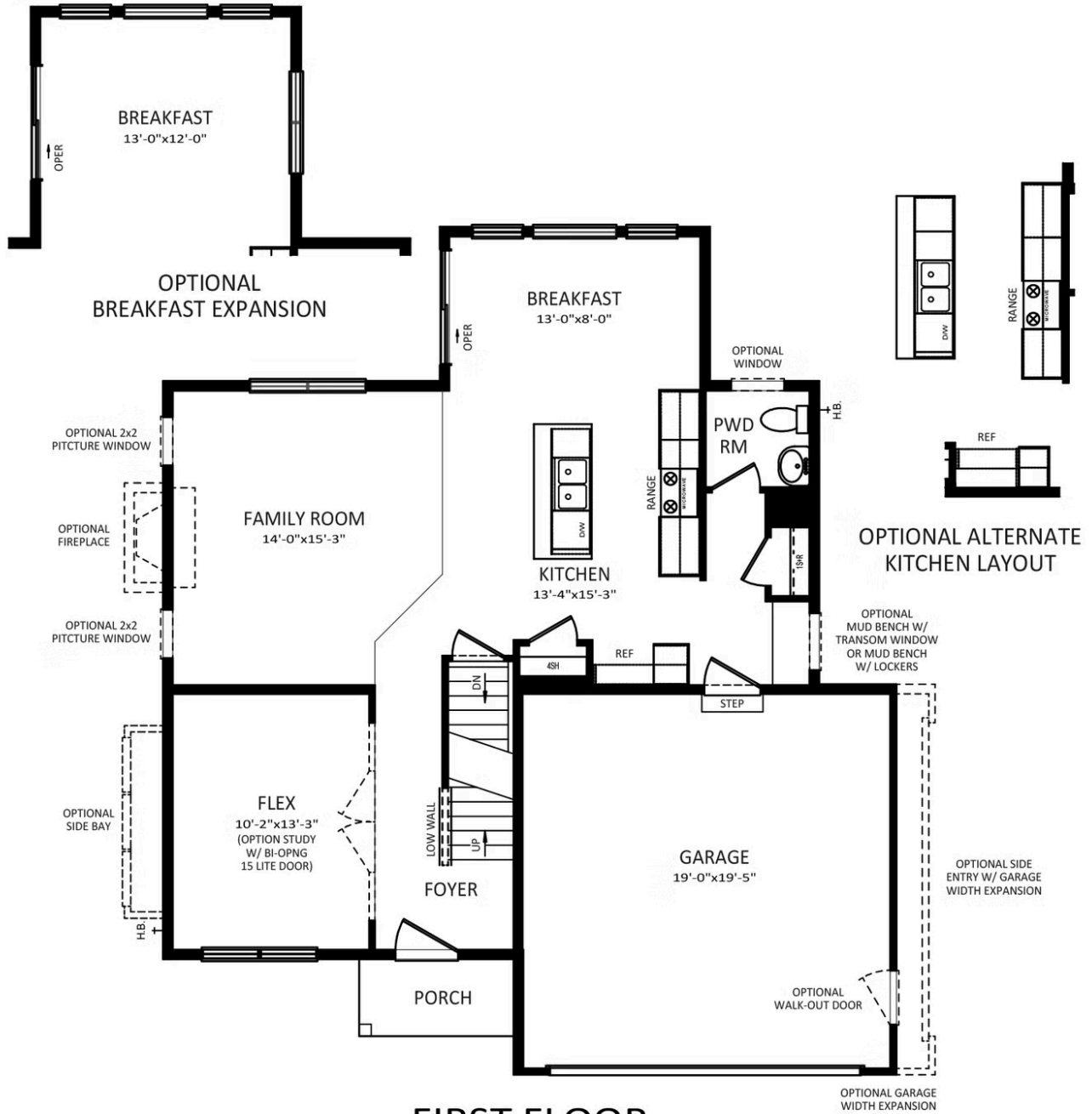


**Have Questions? Ask...**

**KELLY**

(484) 772-2693 / [bhmarketing@berkshomes.com](mailto:bhmarketing@berkshomes.com)





**FIRST FLOOR**

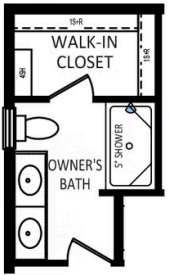
REVERE FIRST LEVEL

**Have Questions? Ask...**

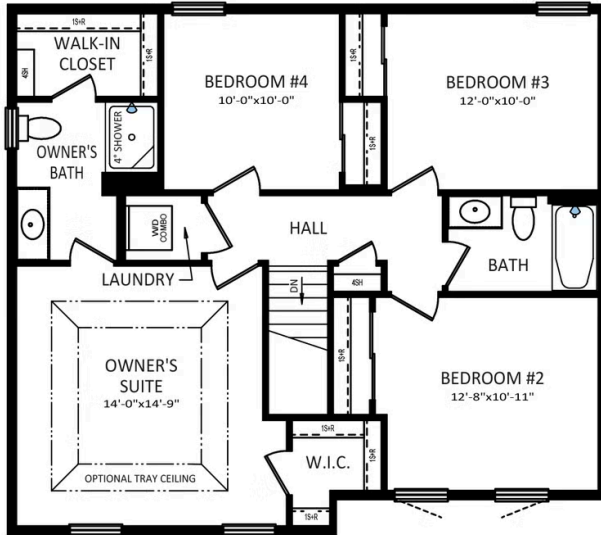
KELLY

(484) 772-2693 / bhmarketing@berkshomes.com

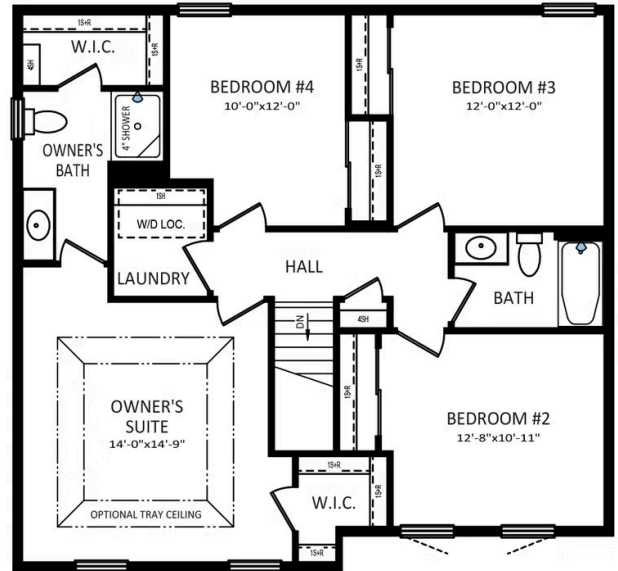




OWNER'S BATH  
DOUBLE BOWL  
VANITY PACKAGE



**SECOND FLOOR**



OPTIONAL 2ND FLOOR  
CANTILEVERED 2' EXPANSION

REVERE SECOND LEVEL

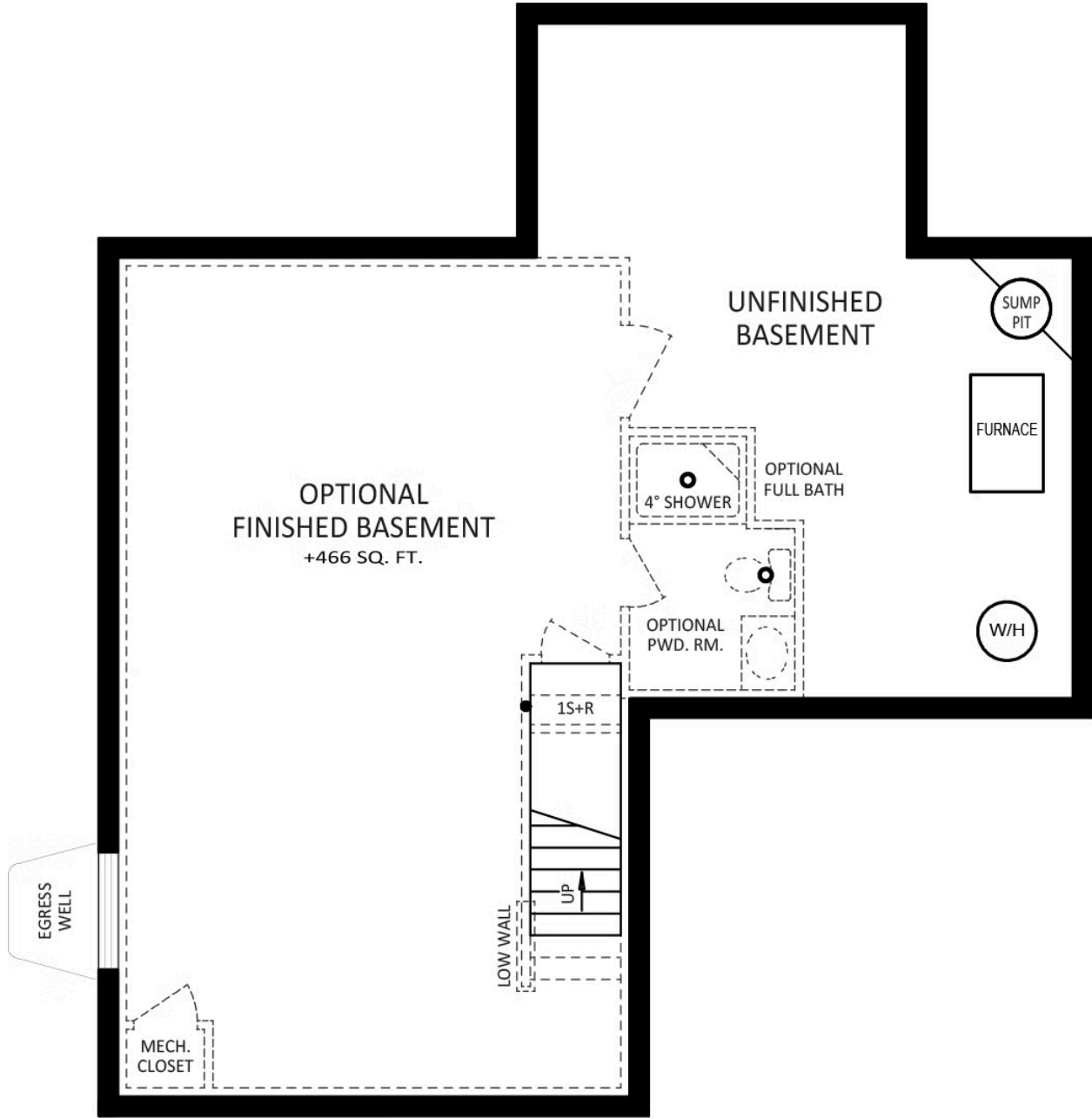


**Have Questions? Ask...**

KELLY

(484) 772-2693 / [bhmarketing@berkshomes.com](mailto:bhmarketing@berkshomes.com)





# FOUNDATION

REVERE LOWER LEVEL

**Have Questions? Ask...**

KELLY

(484) 772-2693 / [bhmarketing@berkshomes.com](mailto:bhmarketing@berkshomes.com)

