

UNDER CONSTRUCTION

FLOORPLAN  
**Willow Duplex**

COMMUNITY  
**Nittany Glen Duplex Homes**



**3  
Beds**



**2.5  
Baths**



**2-Car  
Garage**



**1697  
Sq. Ft.**



REPRESENTATIVE PHOTO

Welcome to this 3-bed, 2.5 bath, 1,697 sq. ft. duplex home, featuring thoughtful upgrades throughout.

As you enter, you're greeted by the spacious family room, featuring upgraded windows and recessed lighting. The family room flows seamlessly into the kitchen, which is enhanced by an island, quartz countertops, tile backsplash, upgraded cabinetry, stainless steel appliances, and recessed lighting. Adjacent to the kitchen is a breakfast area, ideal for casual meals or extra dining space. Engineered vinyl plank flooring runs throughout the family room and kitchen for a sleek, durable look.

Off the kitchen, you'll find the first-floor owner's suite ...

**Sales Office Hours**

Open Wednesday - Saturday 10:00 am - 5:00 pm | Tuesdays By Appointment Only | Closed Sundays and Mon



REPRESENTATIVE PHOTO

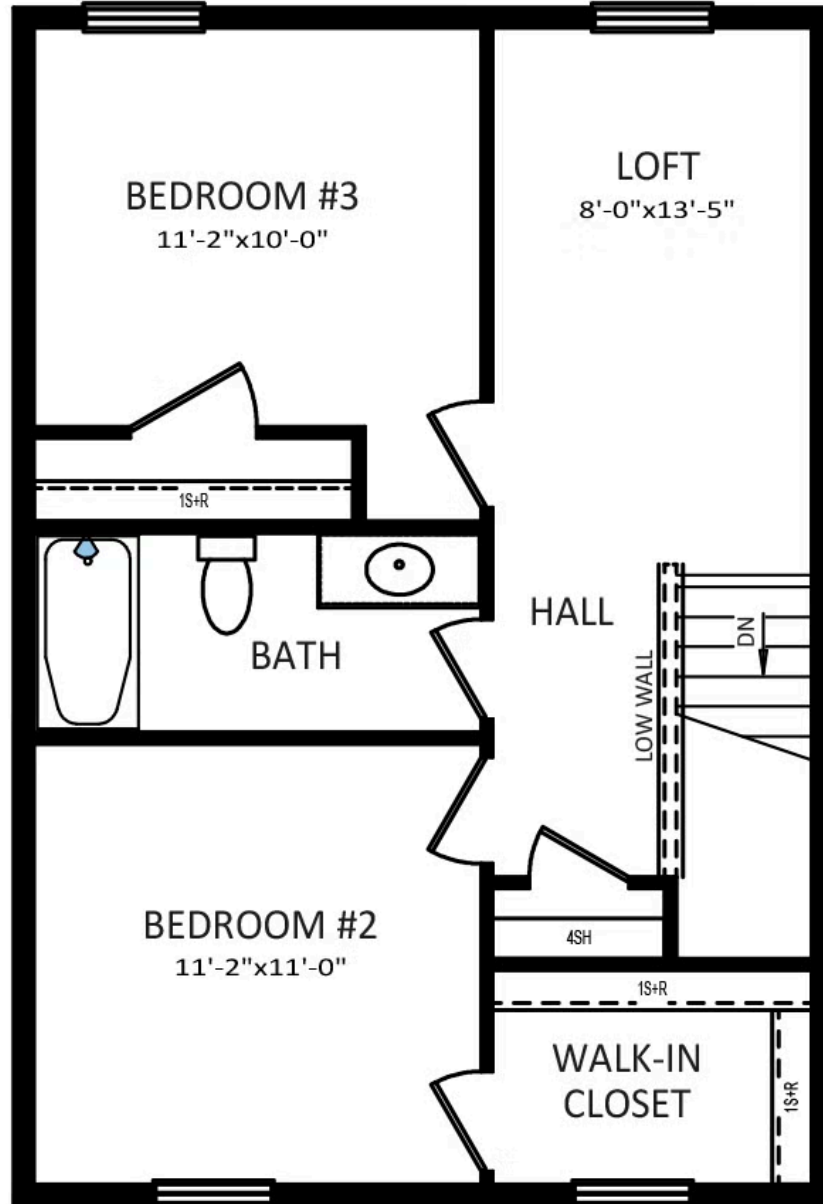


**Have Questions? Ask...**  
**KELLY**

(484) 772-2693 / [bhmarketing@berkshomes.com](mailto:bhmarketing@berkshomes.com)







# SECOND FLOOR

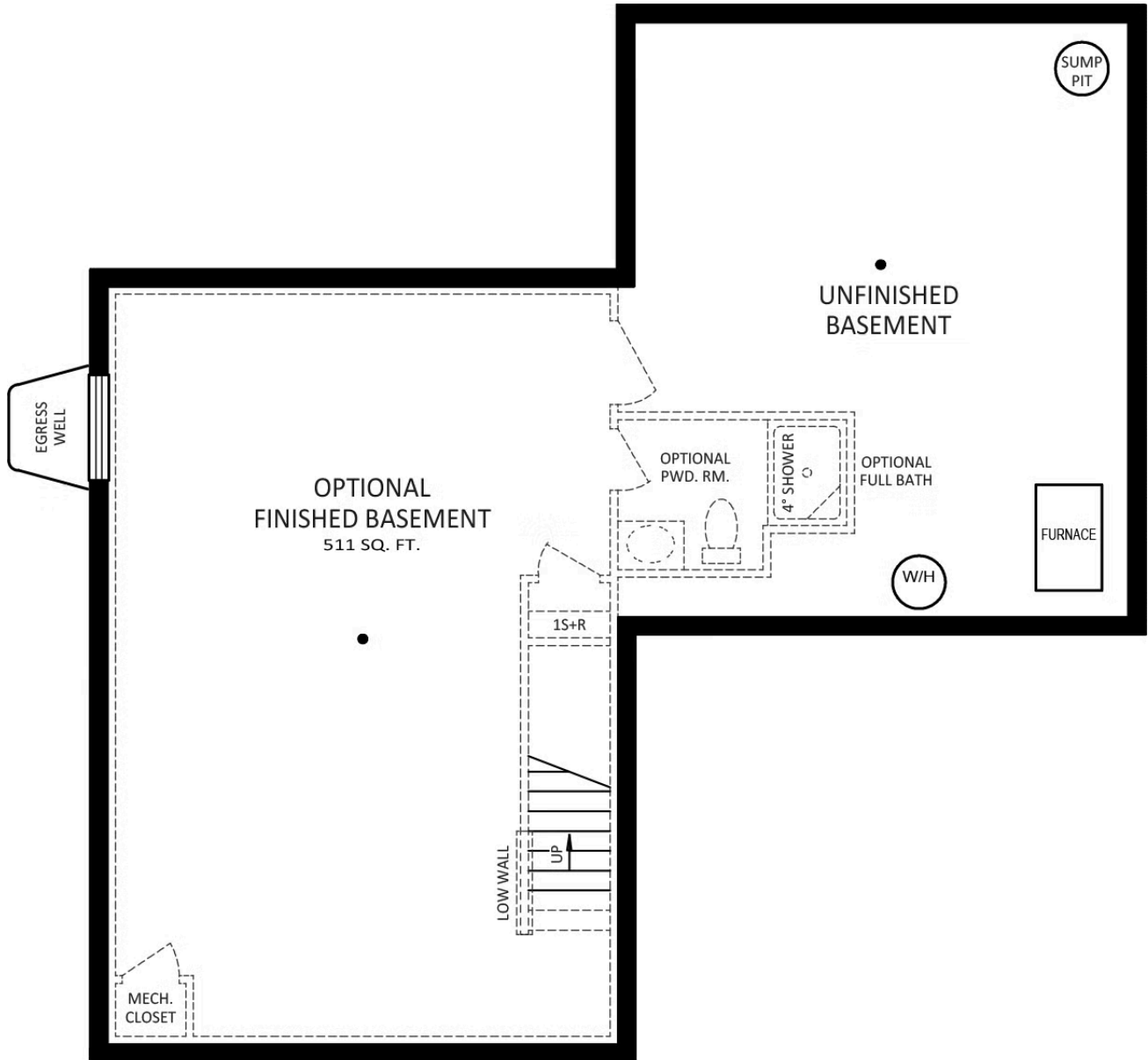
SECOND LEVEL



**Have Questions? Ask...**  
**KELLY**

(484) 772-2693 / [bhmarketing@berkshomes.com](mailto:bhmarketing@berkshomes.com)





## FOUNDATION

LOWER LEVEL



**Have Questions? Ask...**  
**KELLY**

(484) 772-2693 / [bhmarketing@berkshomes.com](mailto:bhmarketing@berkshomes.com)

