



REPRESENTATIVE PHOTO

QUICK MOVE-IN

FLOORPLAN

Revere

COMMUNITY

Hickory Pointe



**4
Beds**



**2.5
Baths**



**2-Car
Garage**



**2033
Sq. Ft.**



REPRESENTATIVE PHOTO

This two-story home combines smart design with meaningful upgrades throughout. The first floor features engineered vinyl plank flooring and a flex room converted into a private study. The family room includes upgraded windows, recessed lighting, and a gas fireplace. The upgraded kitchen offers an island, quartz countertops, tile backsplash, upgraded cabinetry, stainless steel appliances, and recessed lighting. The breakfast room is expanded and opens to a 12' x 12' deck. A mudroom bench adds everyday convenience, and a three-piece basement rough-in provides future flexibility. Upstairs, a second-floor expansion enhances the layout. The owner's suite features a tray ceiling, recessed lighting, a double bowl vanity, and a tile shower.



REPRESENTATIVE PHOTO

Waynesboro Area School District

Sales Office Hours

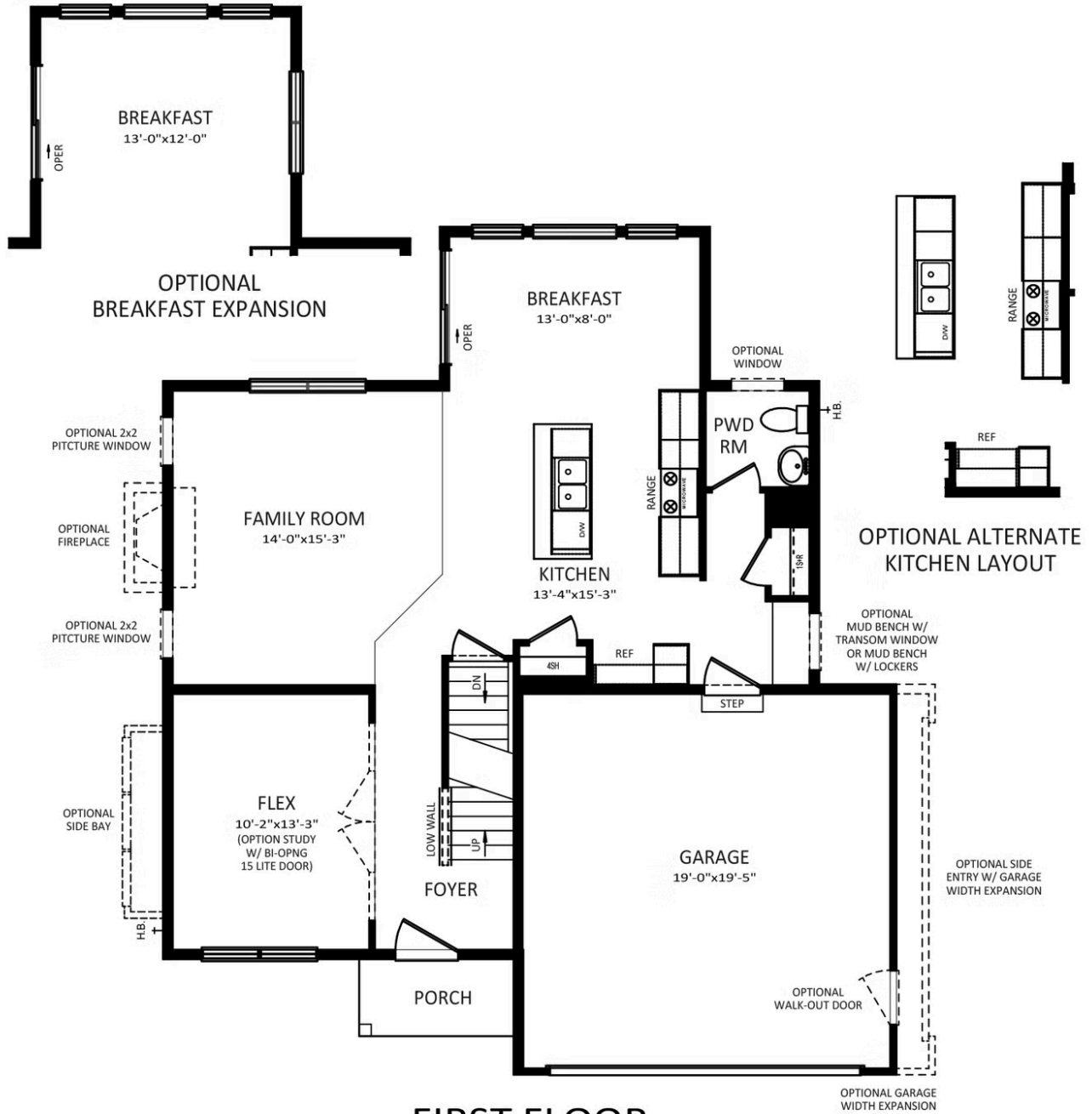
Open Wednesday - Saturday 10:00 am - 5:00 pm | Closed
Sundays & Mondays



Have Questions? Ask...
KELLY

(484) 772-2693 / bhmarketing@berkshomes.com





FIRST FLOOR

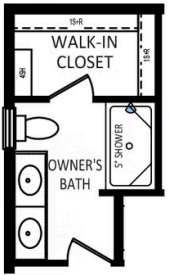
FIRST LEVEL



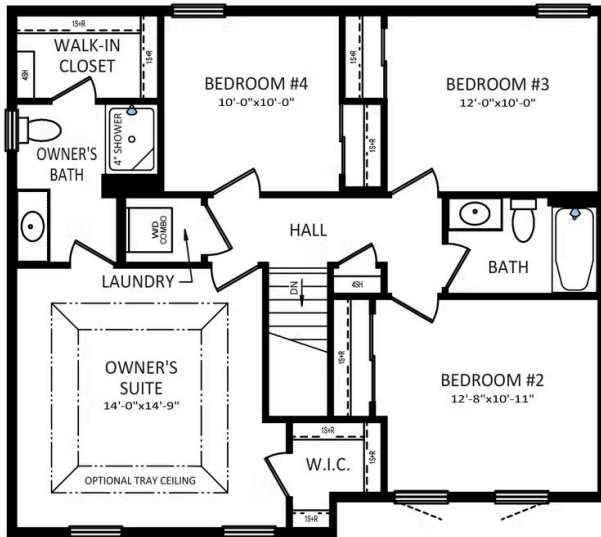
Have Questions? Ask...
KELLY

(484) 772-2693 / bhmarketing@berkshomes.com

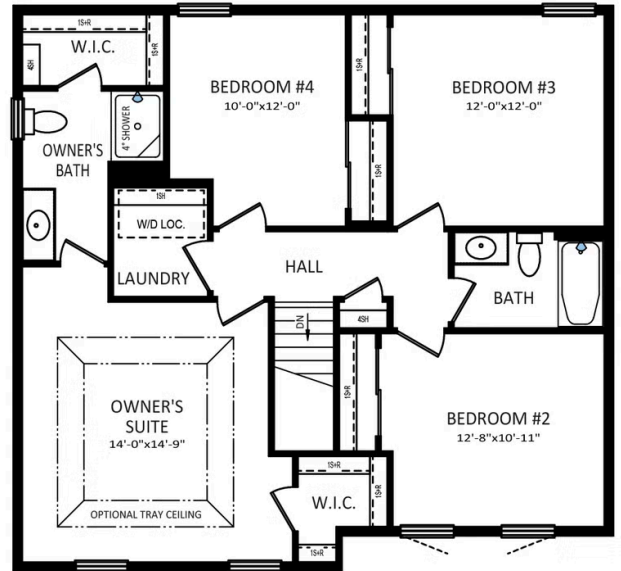




OWNER'S BATH
DOUBLE BOWL
VANITY PACKAGE



SECOND FLOOR



OPTIONAL 2ND FLOOR
CANTILEVERED 2' EXPANSION

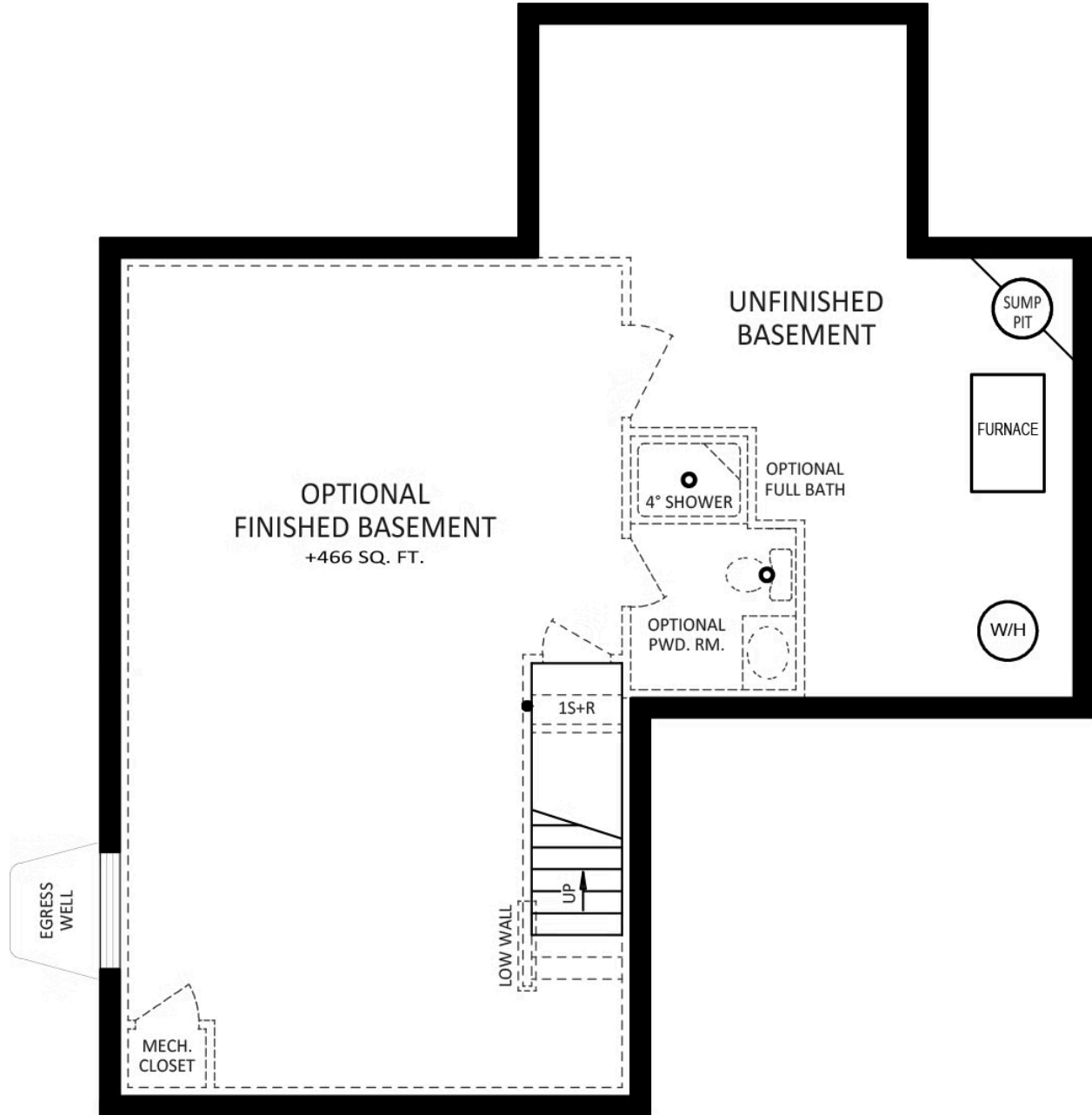
SECOND LEVEL



Have Questions? Ask...
KELLY

(484) 772-2693 / bhmarketing@berkshomes.com





FOUNDATION

LOWER LEVEL



Have Questions? Ask...
KELLY

(484) 772-2693 / bhmarketing@berkshomes.com

