

AVAILABLE IN 1 COMMUNITIES
Hills at Valley View



**3
Beds**



**2 -
3.5
Baths**



**2-Car
Garage**



**1,600
-
1,979
Sq. Ft.**

The Redbud is a modern, stylish home with a spacious kitchen and breakfast area. The large family room is adjacent to the kitchen and breakfast combo, making this an excellent space for entertaining friends and family. On the second floor, you have three bedrooms, including a primary suite with a private bath and walk-in closet. A large hallway bathroom and convenient laundry room complete this package. If you want additional living space, add another 330 sq. ft. by finishing the lower level and even including a powder room, or go for the gold and make it a full bath with a shower. Several optional upgrades include an alternate kitchen, first-floor powder room, and primary bath double bowl vanity package.

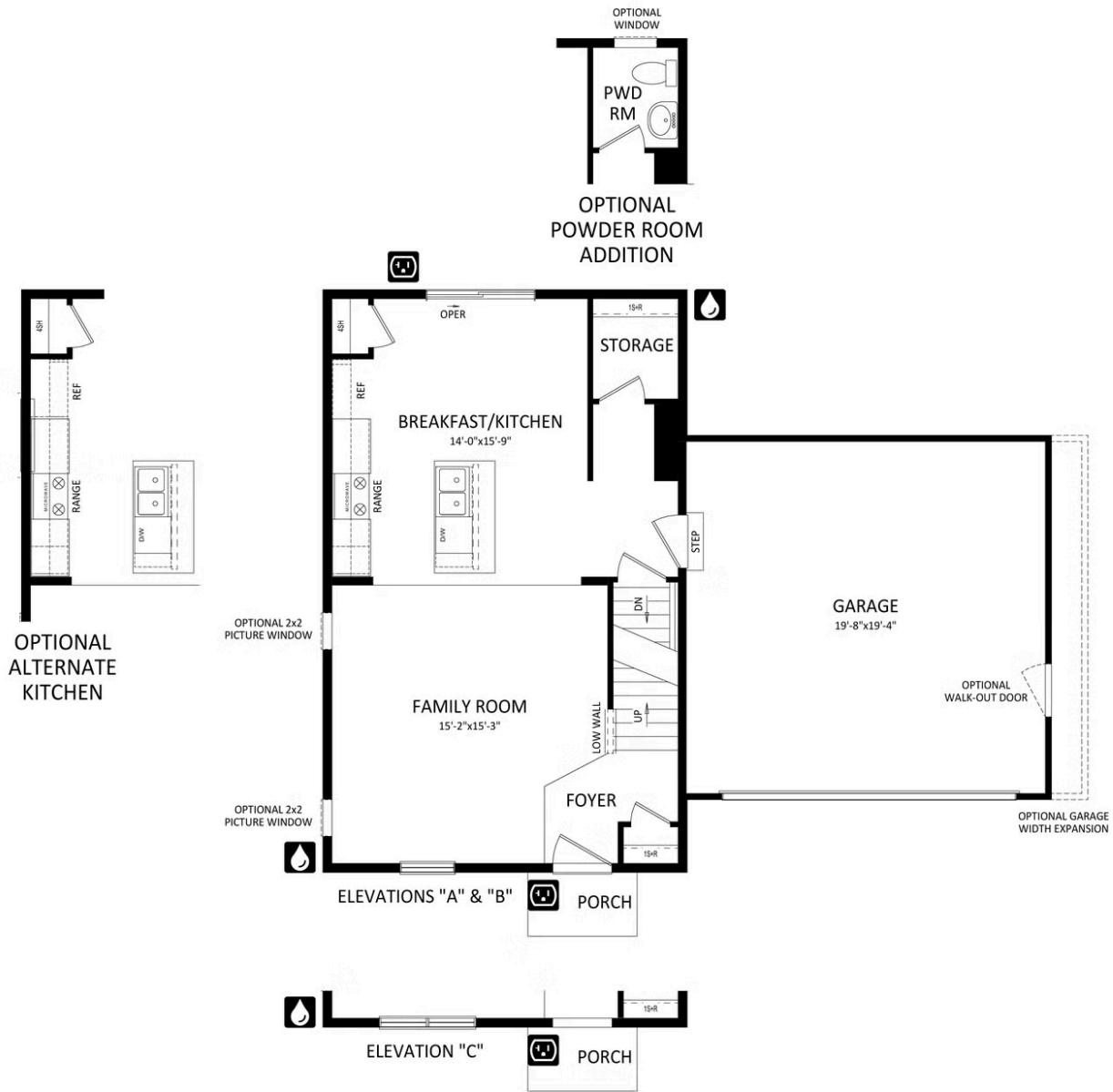


Have Questions? Ask...

KELLY

(484) 772-2693 / bhmarketing@berkshomes.com





FIRST LEVEL

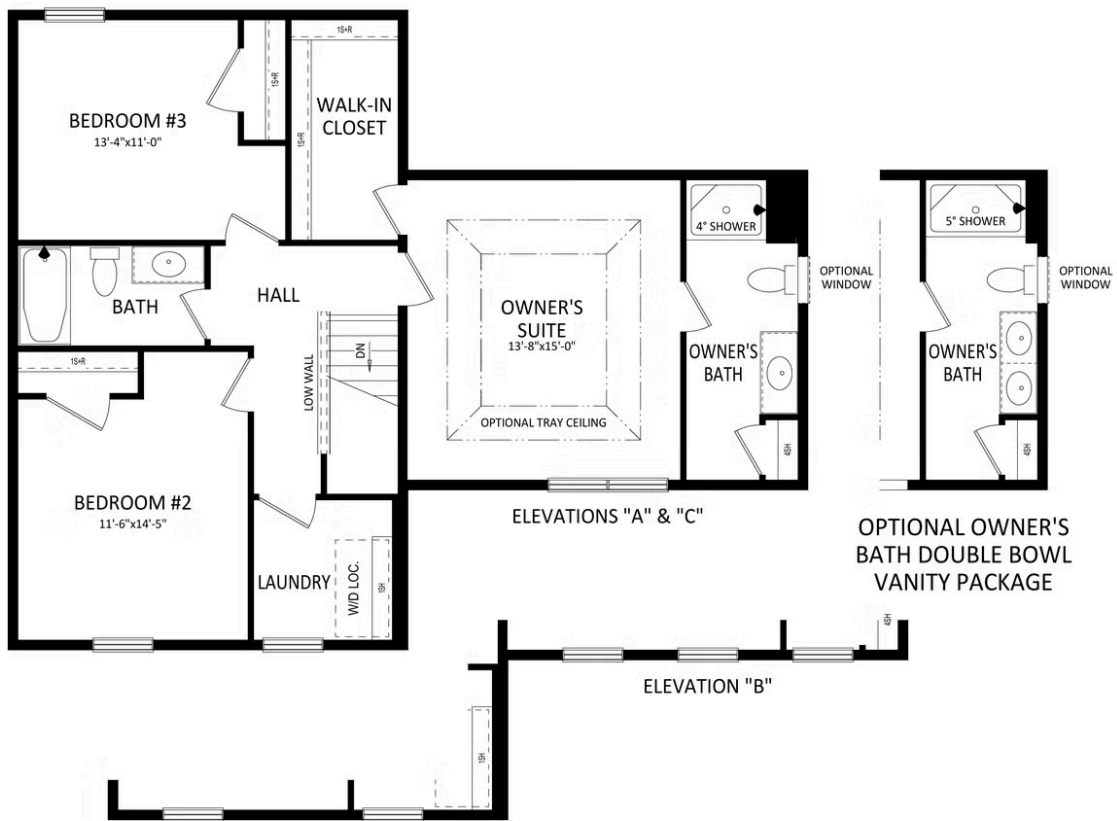


Have Questions? Ask...

KELLY

(484) 772-2693 / bhmarketing@berkshomes.com





SECOND LEVEL

Have Questions? Ask...

KELLY

(484) 772-2693 / bhmarketing@berkshomes.com





LOWER LEVEL



Have Questions? Ask...

KELLY

(484) 772-2693 / bhmarketing@berkshomes.com

