



**4  
Beds**



**2.5 -  
4  
Baths**



**2-Car  
Garage**



**2,189**

-

**3,007  
Sq. Ft.**

4 beds | 2.5 baths | from 2,189 sqft

The Sage offers 2,189 sq. ft. of thoughtfully designed living space with an open and connected layout that complements today's lifestyles. Featuring four bedrooms, two-and-a-half baths, and a versatile flex room, this home provides the ideal balance of comfort and functionality. The open flow between the kitchen, breakfast area, and family room creates a welcoming environment for both everyday living and entertaining.

Upstairs features a loft and a spacious primary suite, including a private bath and walk-in closet. Homeowners can also choose to finish the lower level for an additional 549 sq. ft. of flexible living space. The Sage also includes a two-car garage with options for width expansion and a walk-out door, adding even more convenience to this thoughtfully designed floorplan.

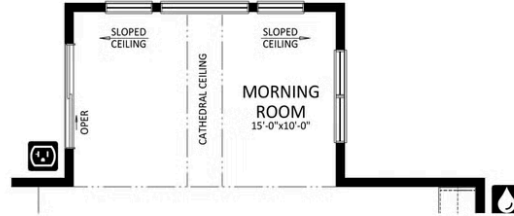


**Have Questions? Ask...**

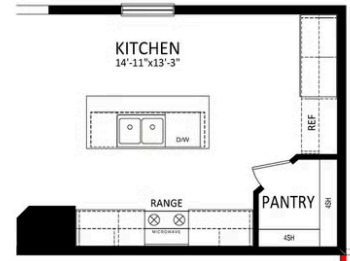
**KELLY**

(484) 772-2693 / [bhmarketing@berkshomes.com](mailto:bhmarketing@berkshomes.com)

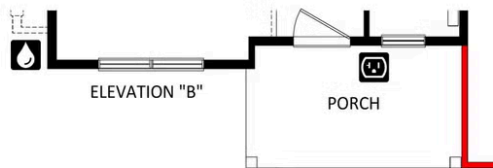
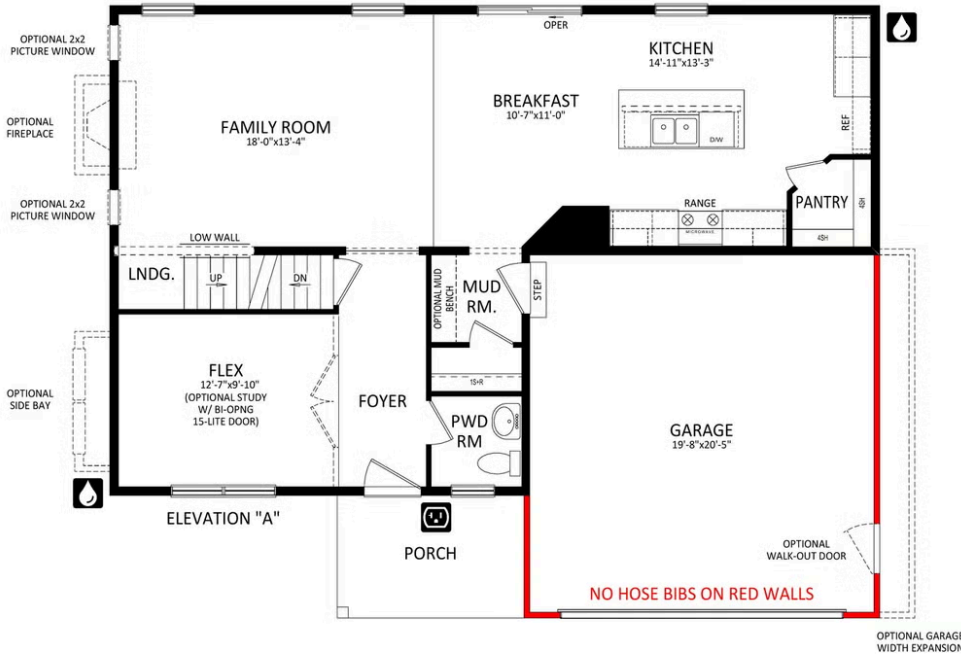




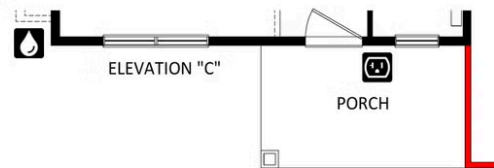
OPTIONAL MORNING ROOM



OPTIONAL ALTERNATE KITCHEN



ELEVATION "B"



ELEVATION "C"

FIRST LEVEL



Have Questions? Ask...

KELLY

(484) 772-2693 / bhmarketing@berkshomes.com







LOWER LEVEL



**Have Questions? Ask...**

KELLY

(484) 772-2693 / [bhmarketing@berkshomes.com](mailto:bhmarketing@berkshomes.com)

