

# Sweet Birch

AVAILABLE IN 3 COMMUNITIES

**Seiders Hill**  
**Stone Mill Estates**  
**Hills at Valley View**



**4  
Beds**



**2.5 -  
4  
Baths**



**2-Car  
Garage**



**1,927  
-  
2,503  
Sq. Ft.**

Welcome to this stunning 2-story home presenting 4 bedrooms and 2 1/2 baths. The Sweet Birch has a modern, open floor plan designed to maximize its living space and functionality. Walking into the Sweet Birch will feel like home at the first step into the foyer. The first floor boasts a cozy breakfast area, a kitchen with an island, a spacious family room, and a much sought-after flex room. The second level will delight you with four sizeable bedrooms, including a primary suite with a large walk-in closet and private bath. A convenient 2nd-level laundry near the bedrooms and full bath round out this level. The lower level is perfect for extra living space, including a powder room or full bath, adding even more value to your home while still leaving an abundance of space for your storage needs.

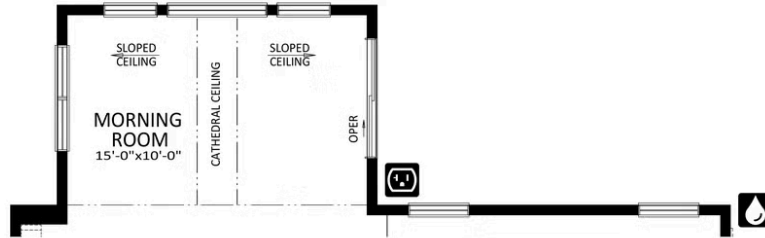


**Have Questions? Ask...**

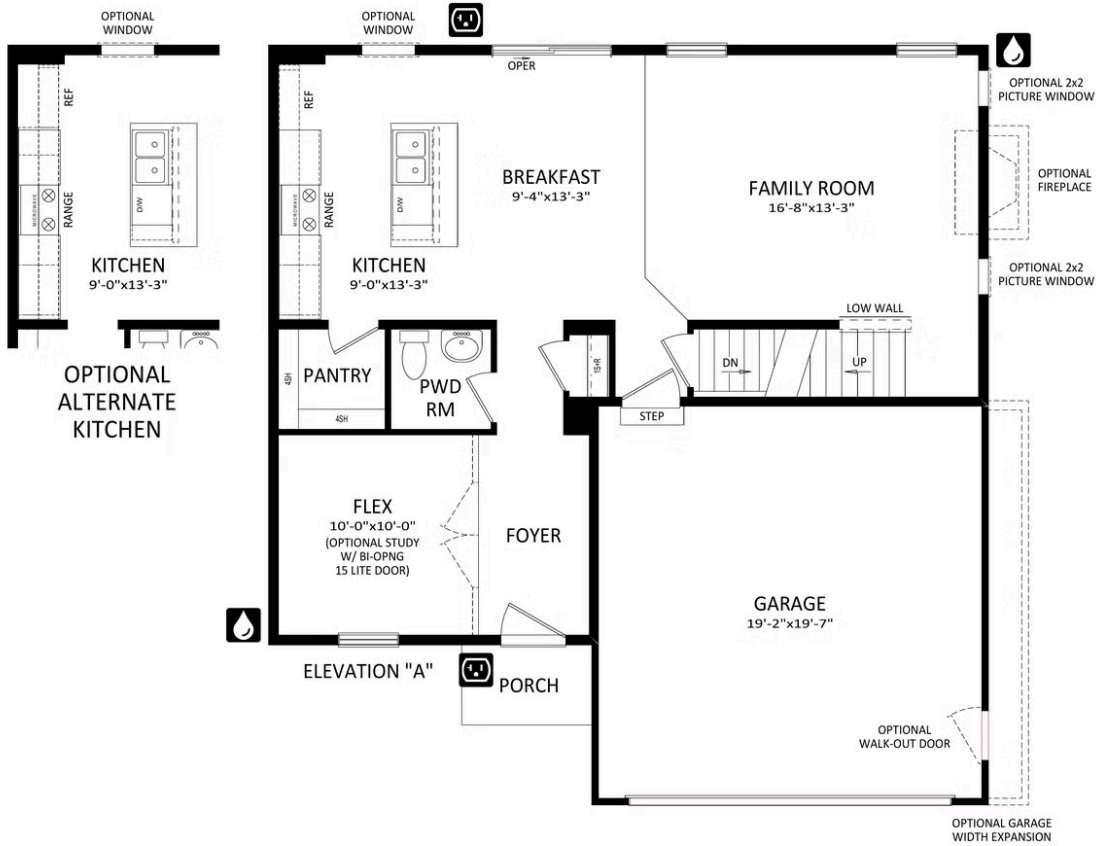
**KELLY**

(484) 772-2693 / [bhmarketing@berkshomes.com](mailto:bhmarketing@berkshomes.com)





OPTIONAL MORNING ROOM ADDITION



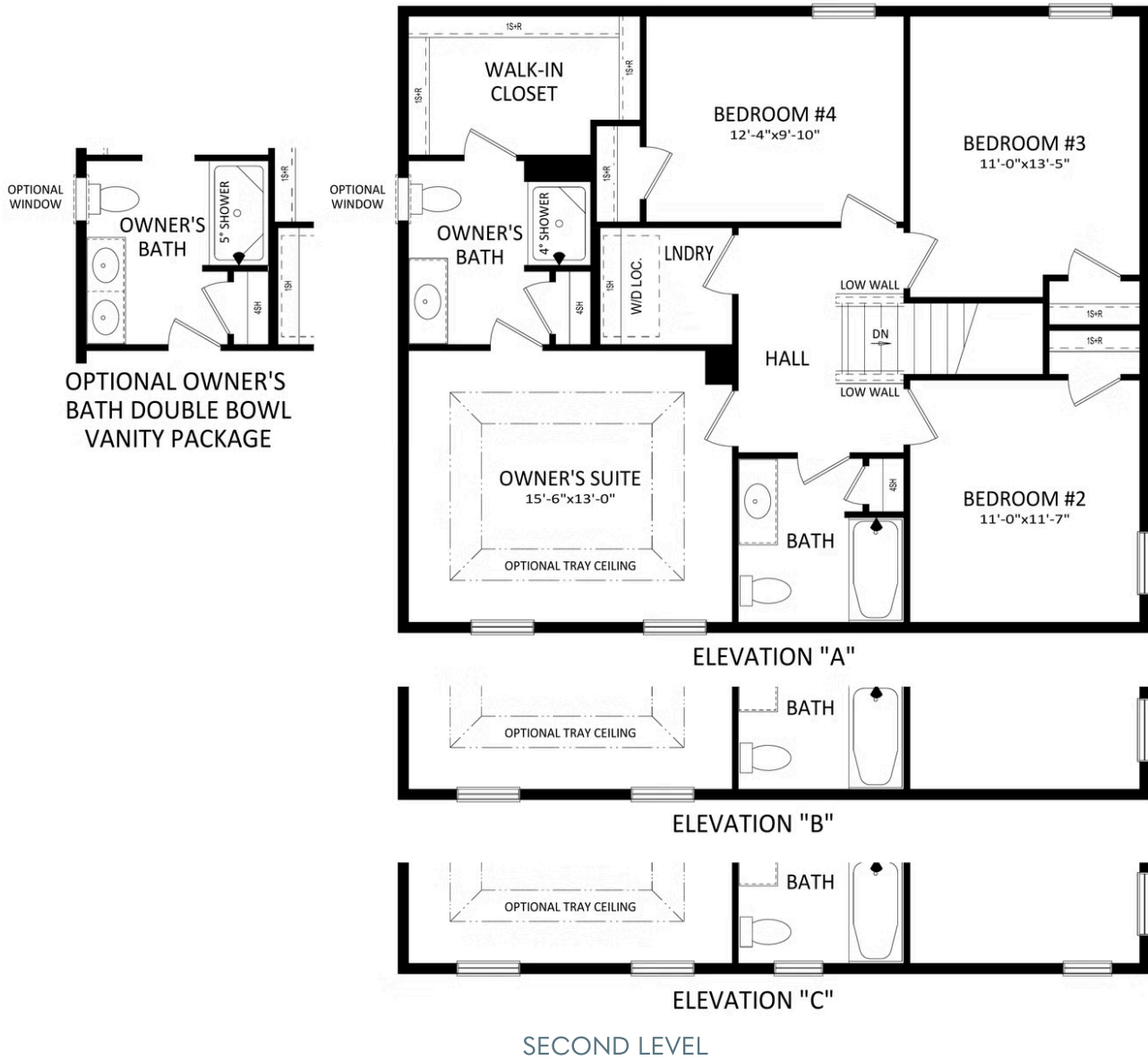
FIRST LEVEL

Have Questions? Ask...

KELLY

(484) 772-2693 / bhmarketing@berkshomes.com



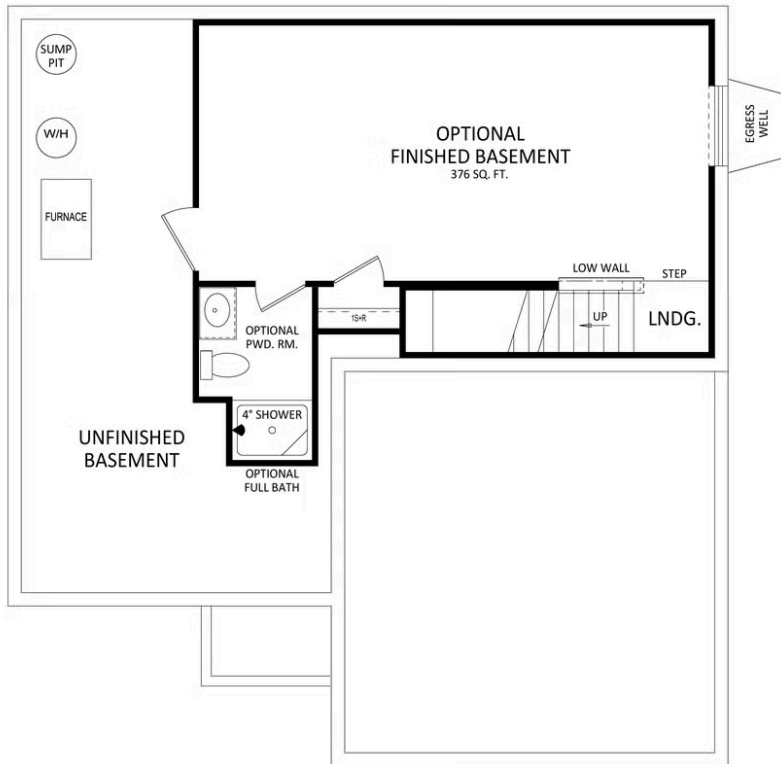
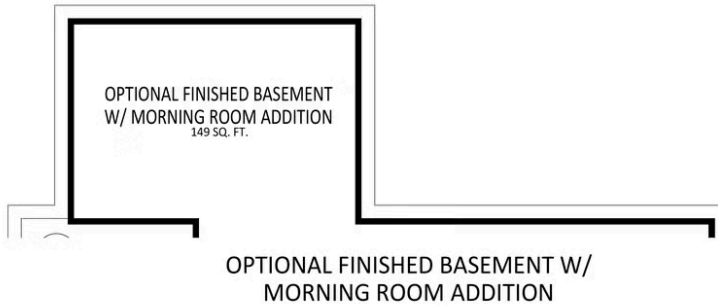


**Have Questions? Ask...**

**KELLY**

(484) 772-2693 / [bhmarketing@berkshomes.com](mailto:bhmarketing@berkshomes.com)





LOWER LEVEL

**Have Questions? Ask...**

KELLY

(484) 772-2693 / [bhmarketing@berkshomes.com](mailto:bhmarketing@berkshomes.com)

