



4 - 5  
**Beds**



3.5 -  
**6  
Baths**



2 - 3-  
**Car  
Garage**



3,525

-

5,319  
**Sq. Ft.**

The Wheatland is an impressive 4-bedroom, 3.5-bathroom new home by Berks Homes that was designed to make a statement. The open kitchen, breakfast room, and family room create a stunning and functional living space for all homeowners, and the first floor also includes a den and flex room, offering additional room for work or leisure. The primary suite features 2 walk-in closets and a private bath, providing a retreat for homeowners, and three additional bedrooms, two full baths, a laundry room, and a convenient storage room complete the second floor. With options to add a first-floor bedroom and full bath, choose from multiple alternate kitchen layouts, incorporate a morning room, add a loft, select from various primary bath upgrades, and finish the basement, you have the freedom to personalize this new home to your exact specifications.



**Have Questions? Ask...**

**KELLY**

(484) 772-2693 / [bhmarketing@berkshomes.com](mailto:bhmarketing@berkshomes.com)





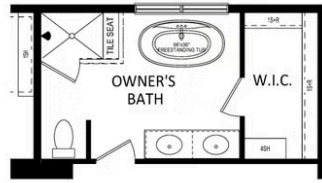
FIRST LEVEL

Have Questions? Ask...

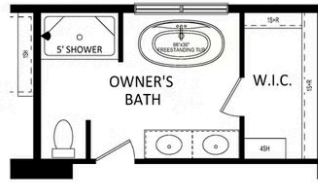
KELLY

(484) 772-2693 / bhmarketing@berkshomes.com

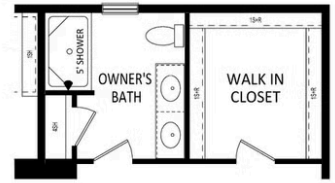




OPTIONAL OWNER'S LUXURY BATH PACKAGE



OPTIONAL OWNER'S SERENITY BATH PACKAGE



OPTIONAL OWNER'S BATH DOUBLE BOWL VANITY PACKAGE



SECOND LEVEL

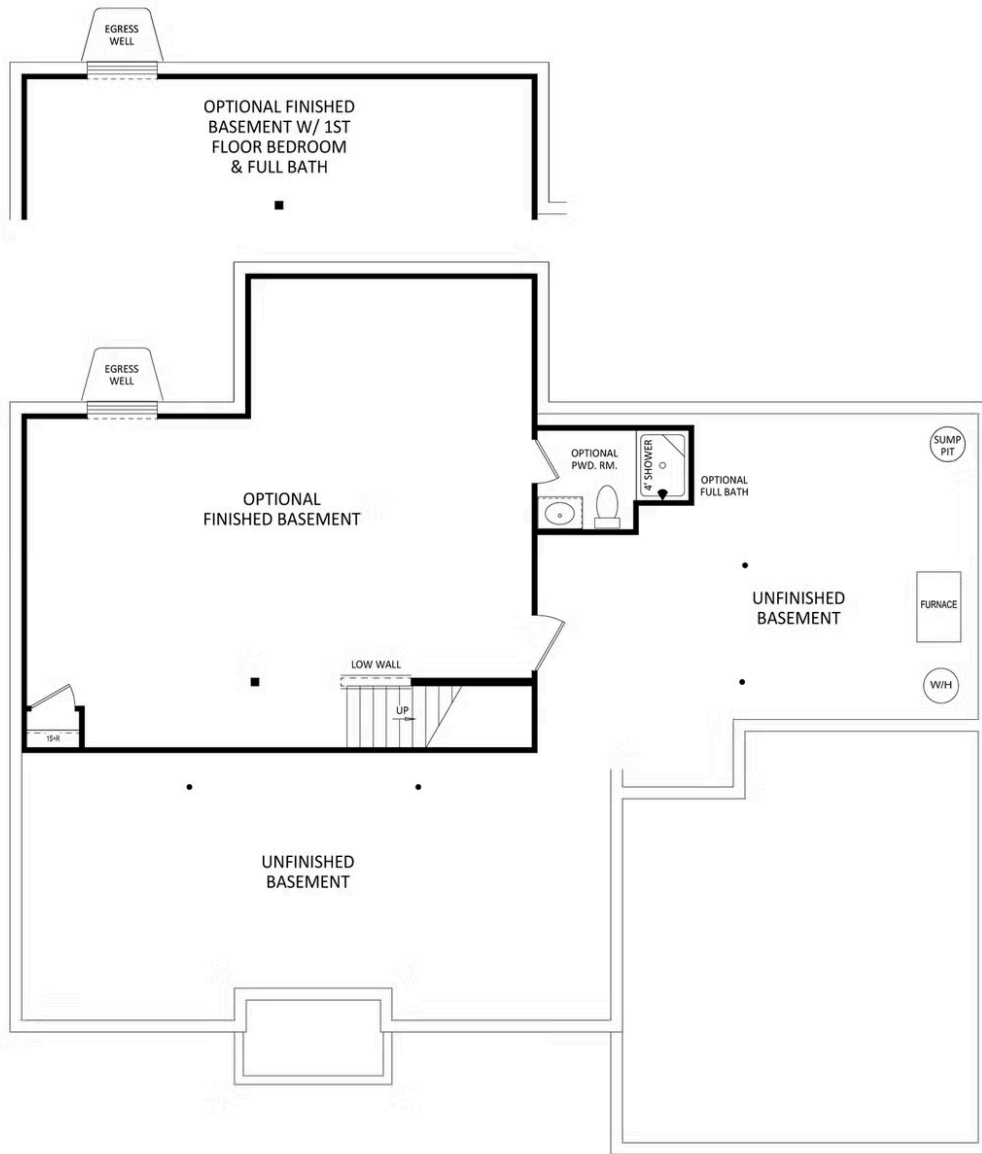


Have Questions? Ask...

KELLY

(484) 772-2693 / bhmarketing@berkshomes.com





LOWER LEVEL

**Have Questions? Ask...**

KELLY

(484) 772-2693 / [bhmarketing@berkshomes.com](mailto:bhmarketing@berkshomes.com)

